



ALLIANCE
TRUCK PARTS

CHROME & STAINLESS ACCESSORIES



ALL-MAKES HEAVY-DUTY CHROME & STAINLESS ACCESSORIES

Alliance Truck Parts has over 30 product lines that serve the commercial transportation industry with reliable new and remanufactured parts and accessories for all makes and all models¹ to keep trucks and buses on the road. All Alliance Truck Parts meet or exceed OES specifications for quality, fit and finish and are backed by a nationwide warranty², which means you don't have to trade quality for price.

ALL-MAKES HEAVY-DUTY CHROME & STAINLESS ACCESSORIES



Illustrations and photographs used in this catalog may vary slightly from the actual product. Prototype samples are sometimes used for photography. The production parts may vary slightly.

Availability of products shown in this catalog is subject to change without notice.

WARRANTY

Alliance truck parts are backed by a 1-year/unlimited-mile standard warranty.

TABLE OF CONTENTS

TABLE OF CONTENTS

1	ABS PRODUCTS	PAGE 2
	FRONT AXLE COVER KITS	3-6
	FRONT AXLE REPLACEMENT PARTS.....	7
	REAR AXLE COVER KITS	8-10
	REAR AXLE REPLACEMENT PARTS.....	11
	REAR AXLE REPLACEMENT PART INSTALLATION INSTRUCTIONS	12
2	NUT & BOLT COVERS	PAGE 14
	ABS CHROME NUT COVERS.....	15-18
	ABS CHROME NUT COVER INSTALLATION INSTRUCTIONS	19
	CHROME-PLATED STEEL & STAINLESS STEEL NUT COVERS	20-24
	CHROME-PLATED STEEL & STAINLESS STEEL NUT COVER INSTALLATION INSTRUCTIONS.....	25
	BOLT COVERS.....	26
	NUT COVER INSTALLATION TOOLS	27
3	HUB & HUBDOMETER CAPS	PAGE 28
	FRONT HUB & HUBDOMETER CAPS.....	29-33
	REAR HUB & HUBDOMETER CAPS.....	34-37
	TRAILER HUB CAPS	38
	HUB & HUBDOMETER INSTALLATION & MAINTENANCE	39
4	AXLE COVERS	PAGE 40
	FRONT AXLE ACCESSORY COMPONENTS.....	41-42
	FRONT AXLE COMPONENT INSTALLATION INSTRUCTIONS.....	43
	REAR AXLE ACCESSORY COMPONENTS.....	44-47
	REAR AXLE COMPONENTS INSTALLATION INSTRUCTIONS	48-49
5	WHEEL COVERS	PAGE 50
	FRONT WHEEL COVER KITS.....	51-52
	FRONT WHEEL COVERS.....	53
	FRONT WHEEL COVER KIT INSTALLATION INSTRUCTIONS	54
6	SIMULATORS	PAGE 56
	FRONT WHEEL SIMULATORS	57
	REAR WHEEL SIMULATORS	58
	LIGHT-DUTY WHEEL SIMULATOR KITS	59-61
	LIGHT-DUTY FRONT WHEEL SIMULATOR KITS	62
	LIGHT-DUTY REAR WHEEL SIMULATOR KITS	63-64
	SIMULATOR PRODUCT FEATURES.....	65-66
	SIMULATOR INSTALLATION INSTRUCTIONS.....	67

TABLE OF CONTENTS

7	MUD FLAP ACCESSORIES	PAGE 68
	TOP & BOTTOM WEIGHTS.....	69
	BOTTOM WEIGHTS.....	70-72
	TOP & BOTTOM WEIGHT INSTALLATION INSTRUCTIONS.....	73
	ANTI-SAIL BRACKETS.....	74
8	LICENSE PLATE ACCESSORIES	PAGE 76
	LICENSE FRAMES.....	77-78
	FRONT FRAME COVERS	79
	REAR FRAME COVERS.....	80
9	DECORATIVE HARDWARE	PAGE 82
	DECORATIVE HARDWARE	83-84
10	BUMPER GUIDES	PAGE 86
	BUMPER GUIDES	87-88
11	AIR HORNS	PAGE 90
	AIR HORNS.....	91
	AIR HORN REPAIR KITS.....	92
	AIR HORN COVERS	93
12	FANS	PAGE 94
	FANS	95
13	HYDRAULIC BOTTLE JACKS	PAGE 96
	HYDRAULIC BOTTLE JACKS	97
14	BOOT BRUSHES	PAGE 98
	BOOT BRUSHES.....	99

TABLE OF CONTENTS

TABLE OF CONTENTS

15

ELECTRICAL ACCESSORIES

PAGE 100

AIR CLEANER LIGHT BARS - FRONT.....	101
AIR CLEANER LIGHT BARS - REAR.....	102
BACK-UP LIGHT BRACKET & SHIELD	103
BEZELS & WIRE HARNESSSES	104
CENTER REAR LIGHT BOX.....	105
MARKER LAMPS	106-107
OVAL LIGHT BAR.....	108

16

MISCELLANEOUS ACCESSORIES

PAGE 110

BATTERY BOX PANEL	111
BUNK VENT COVER	112
BUSINESS CARD HOLDER.....	113
DECK PLATE.....	114
FENDER TRIM	115
FUEL TANK SKIRT	116
HEADLIGHT VISORS.....	117-118
TRAILER SERVICE BOX	119

17

GRILLES

PAGE 120

GRILLES.....	121-122
--------------	---------

18

CLASSIC/XL ACCESSORIES

PAGE 124

BATTERY/TOOLBOX COVERS	125
BUG DEFLECTOR	126
CAB SKIRTS	127
COWL PANELS	128
DOOR WINDOW DEFLECTOR	129
DOOR WINDOW SHADE	130
EXHAUST SHROUD.....	131
EXTENDER SKIRTS	132-133
FENDER GUARDS.....	134
FRESH AIR INTAKE SHROUD	135
FUSE PANEL COVERS	136
GLOVE BOX COVER	137
GRILLE DEFLECTOR	138
LICENSE PLATE HOLDER.....	139
LOWER HOOD PANELS	140
REAR FRAME COVER	141
SHIFT BASE COVER	142
SLEEPER SKIRTS	143-144
SUN VISOR EXTENSION STRIPS	145
SUN VISORS - EXTRA DEEP	146
SUN VISORS - RAISED ROOF MODELS	147

TABLE OF CONTENTS

TABLE OF CONTENTS

19

CASCADIA ACCESSORIES

PAGE 148

BATTERY/TOOLBOX COVERS	149
BUG DEFLECTOR	150
BUNK WINDOW TRIM.....	151
DOOR WINDOW SHADE	152
FENDER/WHEEL TRIM KIT	153
HOOD LATCH GUARD	154
HOOD TRIM.....	155
LICENSE PLACE HOLDER	156
REAR BUNK PANEL	157
SIGNAL LIGHT TRIM	158
SKIRTING KITS	159-160
STEP TRIM	161
UNDER HEADLIGHT/BUMPER TRIM	162

20

COLUMBIA ACCESSORIES

PAGE 164

BUG DEFLECTOR	165
CAB SKIRTS	166
DOOR HANDLE & LOGO TRIM.....	167
DOOR WINDOW DEFLECTOR	168
EXTENDER SKIRTS	169
FENDER GUARD TRIM.....	170
GRILLE FILLER PANEL	171
HOOD & CAB ACCENT TRIM	172
LICENSE PLATE HOLDER.....	173
MARKER LIGHT TRIM.....	174
SKIRTING KIT	175-176
SLEEPER SKIRTS	177
STORAGE DOOR TRIM	178
SUN VISOR EXTENSION STRIPS	179
SUN VISOR INSERTS	180
SUN VISORS	181
UPPER VENT TRIM.....	182
WHEEL WELL TRIM.....	183
WINDOW TRIM.....	184

21

CORONADO ACCESSORIES

PAGE 186

BATTERY BOX COVER	187
BUG DEFLECTORS.....	188
BUNK VENT TRIM.....	189
DOOR HANDLE TRIM.....	190
DOOR POST ACCENT	191
DOOR WINDOW DEFLECTOR	192
EXTENDER SKIRTS	193
FENDER GUARDS.....	194

TABLE OF CONTENTS

21

CORONADO ACCESSORIES

CONTINUED

GRILLE DEFLECTORS.....	195
LICENSE PLATE HOLDER.....	196
LOWER GRILLE TRIM.....	197
REAR FRAME COVERS.....	198
SUN VISOR EXTENSION STRIPS	199
SUN VISOR SIDE TRIM.....	200
UNDER WINDOW DOOR ACCENT	201
WINDOW SHADE	202

22

CENTURY CLASS ACCESSORIES

PAGE 204

BUG DEFLECTORS.....	205
BUMPER INSERT	206
DOOR WINDOW DEFLECTOR	207
GRILLE TRIM.....	208
LICENSE PLATE INSERT	209
STORAGE DOOR TRIM	210
SUN VISOR EXTENSION STRIP	211
SUN VISOR INSERTS	212
WINDOW TRIM.....	213

23

SEVERE DUTY/FLD-112/120 & M2 BUSINESS CLASS

PAGE 214

BUG DEFLECTORS.....	215
BUMPER INSERT	216
CHROME INTAKE GRILLE.....	217
DOOR WINDOW DEFLECTOR	218
DOOR WINDOW SHADE	219
FENDER GUARDS.....	220
GLOVE BOX COVER	221
GRILLE DEFLECTORS.....	222
SCUFF FAIRING PANELS	223
SUN VISORS	224

24

DISPLAYS

PAGE 226

DISPLAYS	227
----------------	-----

25

CROSS-REFERENCE

PAGE 228

CROSS-REFERENCE.....	229
----------------------	-----

NOTES

[illegible]

ABS PRODUCTS

1



FEATURES & BENEFITS

- Available in a sleek one-piece axle cover/cap design or the popular two-piece design with removable caps
- Available with 33 mm threaded or 1.5" push-on nut covers
- Features Infinity® chrome-plated finish for durability
- All kits include 10 ABS chrome nut covers, one-piece/two-piece ABS axle cover/cap assembly, plastic rim protector and steel locking washer (for push-on style only)

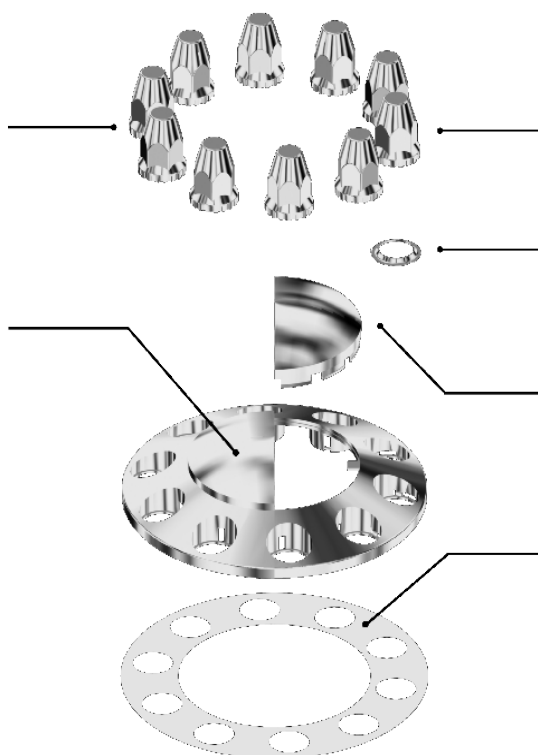
PRODUCT FEATURES

TWIST-ON NUT COVERS

These threaded nut covers are the preferred method for securing the ABS hub cover to the wheel. Interior threads on the nut cover attach securely to the wheel studs, holding the entire assembly onto the wheel.

NON-REMOVABLE CAPS

For applications where access to the axle is not required or when the wheels will be exposed to extreme conditions, such as those commonly found on construction sites and other off-road situations.



PUSH-ON NUT COVERS

These nut covers are designed for applications when insufficient thread exists on the wheel studs for a secure fit.

RETAINING WASHER

Used with push-on style nut covers to secure the hub cover to the wheel. Two are included with ABS kits specified with push-on nut covers.

REMOVABLE HUB CAP

Allows access to the assembly without the need to remove the wheel cover. Extreme wheel stress (under harsh or off-road conditions) can loosen these caps.

PLASTIC RIM PROTECTOR

These clear plastic rim protectors are included with all ABS wheel cover kits to protect the rims of aluminum wheels from abrasive damage and wear marks.

PRODUCT FEATURES

33 MM THREADED NUT COVERS

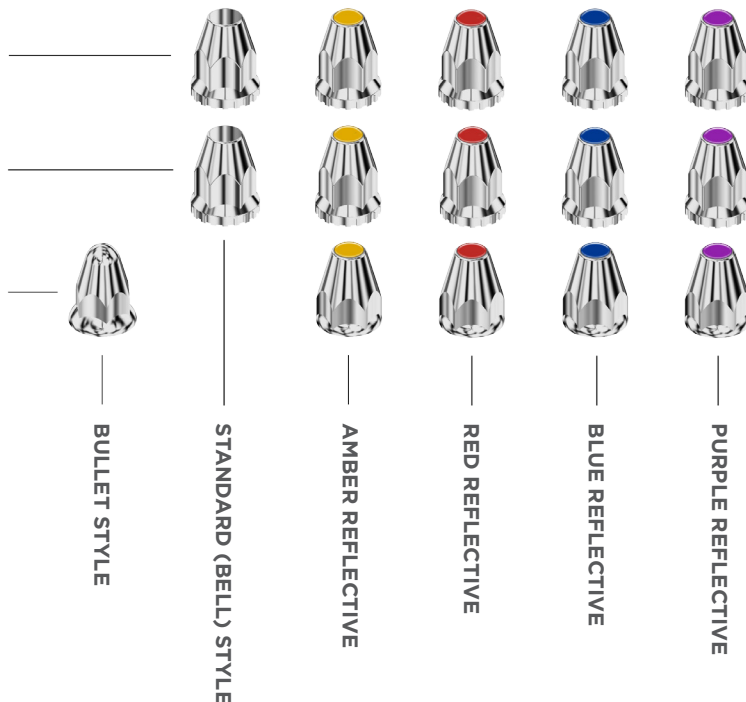
Installed by threading onto the exposed stud above the wheel lug nut.

33 MM PUSH-ON NUT COVERS

Secured onto the wheel by friction fitting over the wheel lug nut. Use when studs are too short to provide a positive grip.

1.5" PUSH-ON NUT COVERS

Secured onto the wheel by friction fitting over the wheel lug nut.



SPECIFICATIONS



33 MM 1-PIECE ABS FRONT AXLE COVER KITS WITH NON-REMOVABLE CAP					
ALLIANCE P/N	NUMBER OF LUG HOLES	NUT COVER SIZE	NUT COVER STYLE	APPLICATION	REFLECTOR COLOR
ABP 40000	10	33 mm	Standard w/flange	Threaded	N/A
ABP 40010	10	33 mm	Reflector w/flange	Threaded	Amber
ABP 40020	10	33 mm	Reflector w/flange	Threaded	Blue
ABP 40030	10	33 mm	Reflector w/flange	Threaded	Purple
ABP 40040	10	33 mm	Reflector w/flange	Threaded	Red

Shown with threaded nut covers



1.5" 1-PIECE ABS FRONT AXLE COVER KITS WITH NON-REMOVABLE CAP					
ALLIANCE P/N	NUMBER OF LUG HOLES	NUT COVER SIZE	NUT COVER STYLE	APPLICATION	REFLECTOR COLOR
ABP 40050	10	1.5"	Standard w/flange	Push-On	N/A
ABP 40060	10	1.5"	Reflector w/flange	Push-On	Amber
ABP 40070	10	1.5"	Reflector w/flange	Push-On	Blue
ABP 40080	10	1.5"	Reflector w/flange	Push-On	Purple
ABP 40090	10	1.5"	Reflector w/flange	Push-On	Red

Shown with push-on nut covers

SPECIFICATIONS

1 FRONT AXLE COVER KITS



1.5" 2-PIECE ABS FRONT AXLE COVER KITS WITH REMOVABLE CAP					
ALLIANCE P/N	NUMBER OF LUG HOLES	NUT COVER SIZE	NUT COVER STYLE	APPLICATION	REFLECTOR COLOR
ABP 40150	10	1.5"	Bullet Style w/flange	Push-On	N/A
ABP 40160	10	1.5"	Reflector w/flange	Push-On	Amber
ABP 40190	10	1.5"	Reflector w/flange	Push-On	Red
ABP 40170	10	1.5"	Reflector w/flange	Push-On	Blue
ABP 40180	10	1.5"	Reflector w/flange	Push-On	Purple

Shown with push-on nut covers



33 MM 2-PIECE ABS FRONT AXLE COVER KITS WITH REMOVABLE CAP					
ALLIANCE P/N	NUMBER OF LUG HOLES	NUT COVER SIZE	NUT COVER STYLE	APPLICATION	REFLECTOR COLOR
ABP 40100	10	33 mm	Standard w/flange	Threaded	N/A
ABP 40110	10	33 mm	Reflector w/flange	Threaded	Amber
ABP 40140	10	33 mm	Reflector w/flange	Threaded	Red
ABP 40120	10	33 mm	Reflector w/flange	Threaded	Blue
ABP 40130	10	33 mm	Reflector w/flange	Threaded	Purple

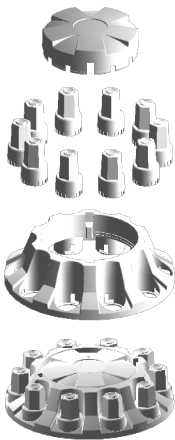
Shown with threaded nut covers



33 MM 2-PIECE ABS FRONT AXLE COVER KITS WITH REMOVABLE CAP - FOR SHORT STUDS					
ALLIANCE P/N	NUMBER OF LUG HOLES	NUT COVER SIZE	NUT COVER STYLE	APPLICATION	REFLECTOR COLOR
ABP 15200	10	33 mm	Standard w/flange	Push-On	N/A
ABP 15210	10	33 mm	Reflector w/flange	Push-On	Amber
ABP 15220	10	33 mm	Reflector w/flange	Push-On	Red
ABP 15230	10	33 mm	Reflector w/flange	Push-On	Blue
ABP 15240	10	33 mm	Reflector w/flange	Push-On	Purple

Shown with push-on nut covers

SPECIFICATIONS



5-SPOKE STYLE 2-PIECE ABS FRONT AXLE COVER KIT					
ALLIANCE P/N	NUMBER OF LUG HOLES	NUT COVER SIZE	NUT COVER STYLE	APPLICATION	REFLECTOR COLOR
ABP 15300	10	33 mm	Hex-Style w/flange	Threaded	N/A

Assembled view

FEATURES & BENEFITS

- Available in a sleek one-piece axle cover/cap design or the popular two-piece design with removable caps
- Features Infinity® chrome-plated finish for durability

SPECIFICATIONS



ABS FRONT AXLE COVER CENTER CAP	
ALLIANCE P/N	DESCRIPTION
ABP 39920	ABS front axle cover center cap (only). Replacement for Alliance ABS kits, ABS front axle cover products.



METAL RETAINING WASHER	
ALLIANCE P/N	DESCRIPTION
ABP 40099	Metal retaining washer for 33 mm (only) ABS front axle cover kits. 2 per package.
ABP 15981	Metal retaining washer for 1.5" (only) ABS front hub cover kits. 2 per package.



RIM PROTECTOR	
ALLIANCE P/N	DESCRIPTION
ABP 15985	Plastic rim protector for ABS front axle cover kits.



ABS HUBDOMETER CONVERSION KIT	
ALLIANCE P/N	DESCRIPTION
ABP 39926	ABS center cap with hubdrometer opening. Use this hubdrometer center cap to convert any Alliance ABS front axle cover kits to a hubdrometer style.

ABS REPLACEMENT NUT COVERS*						
SIZE & TYPE	BULLET STYLE	STANDARD BELL STYLE	AMBER REFLECTOR	RED REFLECTOR	BLUE REFLECTOR	PURPLE REFLECTOR
33 mm Threaded	N/A	ABP 39953	ABP 39963	ABP 39993	ABP 39973	ABP 39983
33 mm Push-On	N/A	ABP 84578	ABP 84587	ABP 84581	ABP 84584	ABP 84593
1.5" Push-On	ABP 18002	N/A	ABP 84183	ABP 84163	ABP 84173	ABP 84153

*Available only in 10-piece blister package



FEATURES & BENEFITS

All kits include:

- 10 ABS chrome nut covers (see styles)
- Two-piece ABS axle cover/cap assembly
- Plastic rim protector
- Steel locking washer (for push-on style only)
- Features Infinity® chrome-plated finish for durability
- Manufactured from rugged ABS plastic to survive under extreme conditions

PRODUCT FEATURES

TWIST-ON NUT COVERS

These threaded nut covers are the preferred method for securing the ABS hub cover to the wheel. Interior threads on the nut cover attach securely to the wheel studs, holding the entire assembly onto the wheel.

PUSH-ON NUT COVERS

These nut covers are designed for applications when insufficient thread exists on the wheel studs for a secure fit.

REMOVABLE HUB CAP

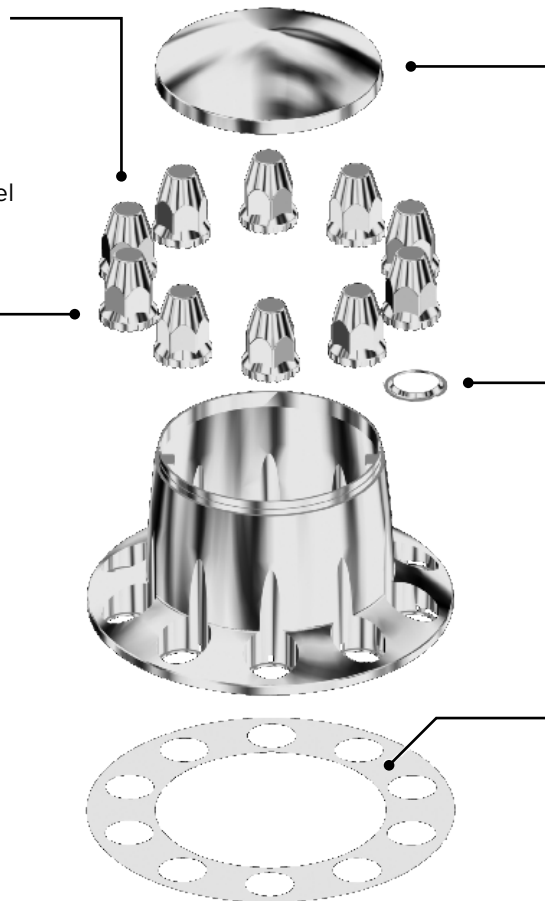
Allows access to the assembly without the need to remove the wheel cover. Extreme wheel stress (under harsh or off-road conditions) can loosen these caps.

RETAINING WASHER

Used with push-on style nut covers to secure the hub cover to the wheel. Two are included with ABS kits specified with push-on nut covers.

PLASTIC RIM PROTECTOR

These clear plastic rim protectors are included with all ABS wheel cover kits to protect the rims of aluminum wheels from abrasive damage and wear marks.



PRODUCT FEATURES

33 MM THREADED NUT COVERS

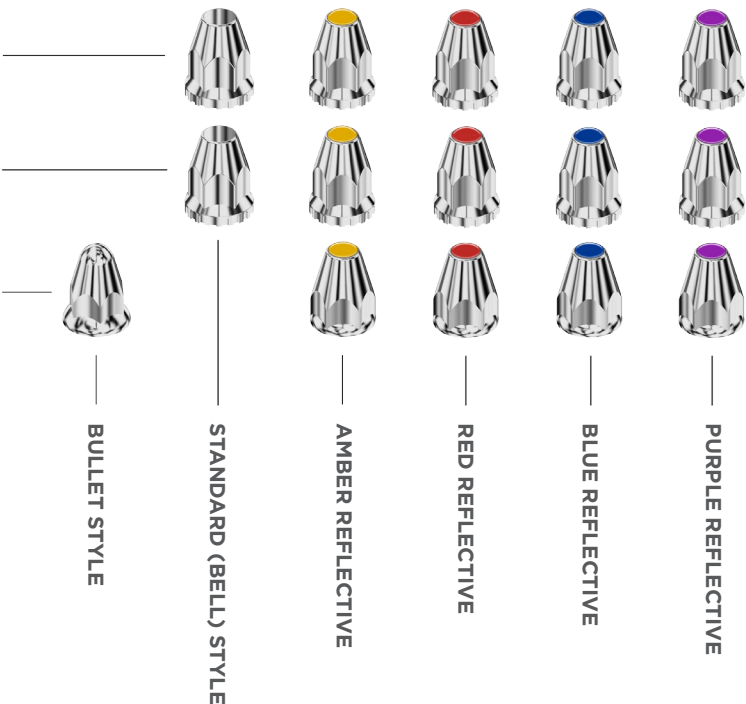
Installed by threading onto the exposed stud above the wheel lug nut.

33 MM PUSH-ON NUT COVERS

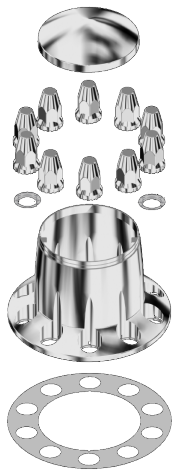
Secured onto the wheel by friction fitting over the wheel lug nut. Use when studs are too short to provide a positive grip.

1.5" PUSH-ON NUT COVERS

Secured onto the wheel by friction fitting over the wheel lug nut.



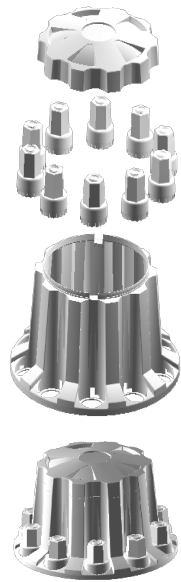
SPECIFICATIONS



33 MM 2-PIECE ABS REAR AXLE COVER KITS WITH REMOVABLE CAP - FOR SHORT STUDS					
ALLIANCE P/N	NUMBER OF LUG HOLES	NUT COVER SIZE	NUT COVER STYLE	APPLICATION	REFLECTOR COLOR
ABP 15700	10	33 mm	Standard w/flange	Push-On	N/A
ABP 15710	10	33 mm	Reflector w/flange	Push-On	Amber
ABP 15720	10	33 mm	Reflector w/flange	Push-On	Red
ABP 15730	10	33 mm	Reflector w/flange	Push-On	Blue
ABP 15740	10	33 mm	Reflector w/flange	Push-On	Purple

Shown with push-on nut covers

SPECIFICATIONS



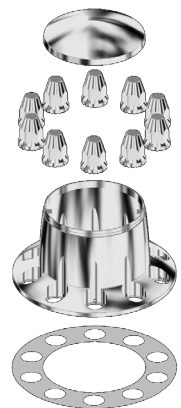
5-SPOKE STYLE 2-PIECE ABS REAR AXLE COVER KIT					
ALLIANCE P/N	NUMBER OF LUG HOLES	NUT COVER SIZE	NUT COVER STYLE	APPLICATION	REFLECTOR COLOR
ABP 15800	10	33 mm	Hex Style w/flange	Threaded	N/A

Assembled view



1.5" 2-PIECE ABS REAR AXLE COVER KITS WITH REMOVABLE CAP					
ALLIANCE P/N	NUMBER OF LUG HOLES	NUT COVER SIZE	NUT COVER STYLE	APPLICATION	REFLECTOR COLOR
ABP 40250	10	1.5"	Bullet Style w/flange	Push-On	N/A
ABP 40260	10	1.5"	Reflector w/flange	Push-On	Amber
ABP 40290	10	1.5"	Reflector w/flange	Push-On	Red
ABP 40270	10	1.5"	Reflector w/flange	Push-On	Blue
ABP 40280	10	1.5"	Reflector w/flange	Push-On	Purple

Shown with push-on nut covers



33 MM 2-PIECE ABS REAR AXLE COVER KITS WITH REMOVABLE CAP					
ALLIANCE P/N	NUMBER OF LUG HOLES	NUT COVER SIZE	NUT COVER STYLE	APPLICATION	REFLECTOR COLOR
ABP 40200	10	33 mm	Standard w/flange	Threaded	N/A
ABP 40210	10	33 mm	Reflector w/flange	Threaded	Amber
ABP 40240	10	33 mm	Reflector w/flange	Threaded	Red
ABP 40220	10	33 mm	Reflector w/flange	Threaded	Blue
ABP 40230	10	33 mm	Reflector w/flange	Threaded	Purple

Shown with threaded nut covers

FEATURES & BENEFITS

- Features Infinity® chrome-plated finish for durability
- Manufactured from rugged ABS plastic to survive under extreme conditions

SPECIFICATIONS



ABS REAR AXLE COVER CENTER CAP	
ALLIANCE P/N	DESCRIPTION
ABP 39940	ABS rear axle cover center cap (only). Replacement for Alliance ABS kits, ABS rear axle cover products.



METAL RETAINING WASHER	
ALLIANCE P/N	DESCRIPTION
ABP 40099	Metal retaining washer for 33 mm (only) ABS rear axle cover kits. 2 per package.
ABP 15981	Metal retaining washer for 1.5" (only) ABS rear axle cover kits. 2 per package.



RIM PROTECTOR	
ALLIANCE P/N	DESCRIPTION
ABP 15985	Plastic rim protector for ABS rear axle cover kits.



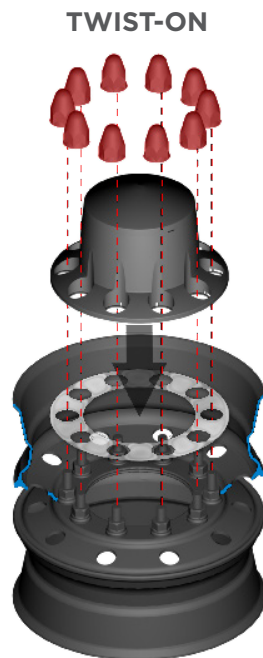
ABS REAR HUBDOMETER CONVERSION KIT	
ALLIANCE P/N	DESCRIPTION
ABP 39943	ABS center cap with hubdometer opening. Use this hubdometer center cap to convert any Alliance ABS rear hub cover kit to a hubdometer style.

ABS REPLACEMENT NUT COVERS*						
SIZE & TYPE	BULLET STYLE	STANDARD 'BELL' STYLE	AMBER REFLECTOR	RED REFLECTOR	BLUE REFLECTOR	PURPLE REFLECTOR
33 mm Threaded	N/A	ABP 39953	ABP 39963	ABP 39993	ABP 39973	ABP 39983
33 mm Push-On	N/A	ABP 84578	ABP 84587	ABP 84581	ABP 84584	ABP 84593
1.5" Push-On	ABP 18002	N/A	ABP 84183	ABP 84163	ABP 84173	ABP 84153

*Available only in 10-piece blister package



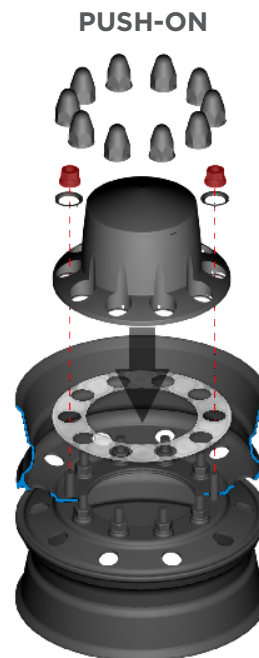
INSTALLATION INSTRUCTIONS



INSTALLATION

Place the rim protector, followed by the ABS hub cover over the existing lug nuts. Holding the ABS hub cover flush with the face of the wheel, twist the ABS nut covers onto the exposed studs until tight. A light clicking sound will indicate that the locking action is working, which will secure the lug nut covers in place.

Lug nut removal is not required.



INSTALLATION

Remove two lug nuts from the wheel, on opposite sides. Place the rim protector, followed by the ABS axle cover over the existing lug nuts. Replace the two lug nuts removed earlier, using the supplied locking washers to secure the axle cover to the wheel. Torque the nuts as usual to complete installation.

NOTES

[illegible]

NUT & BOLT COVERS

2



FEATURES & BENEFITS

- Quality 10-piece ABS replacement nut covers
- Protects exposed lug and nut from dirt, moisture, salt and other damaging road debris
- Alliance offers OEM-grade lug nut covers in every style imaginable
- Molded from automotive-grade ABS polymers
- Features Infinity® chrome-plated finish for durability

REFLECTOR OPTIONS



AMBER



RED

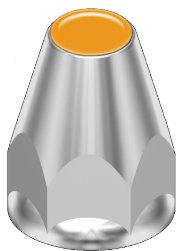


BLUE



PURPLE

SPECIFICATIONS



1 1/2" PUSH-ON ABS CHROME NUT COVERS
WITH FLANGE & REFLECTOR

ALLIANCE P/N	DIAMETER (METRIC)	DIAMETER (INCHES)	HEIGHT	PACKAGING	APPLICATION	REFLECTOR
ABP 84183	38.1 mm	1.5"	2 3/4"	BP	Push-On	Amber
ABP 84188	38.1 mm	1.5"	2 3/4"	Box of 100	Push-On	Amber
ABP 84163	38.1 mm	1.5"	2 3/4"	BP	Push-On	Red
ABP 84168	38.1 mm	1.5"	2 3/4"	Box of 100	Push-On	Red
ABP 84173	38.1 mm	1.5"	2 3/4"	BP	Push-On	Blue
ABP 84178	38.1 mm	1.5"	2 3/4"	Box of 100	Push-On	Blue
ABP 84153	38.1 mm	1.5"	2 3/4"	BP	Push-On	Purple
ABP 84158	38.1 mm	1.5"	2 3/4"	Box of 100	Push-On	Purple



33 MM TWIST-ON ABS CHROME NUT COVERS WITH FLANGE

ALLIANCE P/N	DIAMETER (METRIC)	HEIGHT	PACKAGING	APPLICATION	REFLECTOR
ABP 39950	33 mm	2 7/8"	Box of 250	Twist-On	N/A
ABP 39953	33 mm	2 7/8"	BP	Twist-On	N/A
ABP 39958	33 mm	2 7/8"	Box of 100	Twist-On	N/A

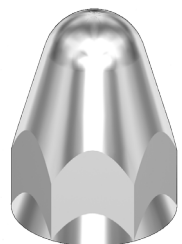
SPECIFICATIONS



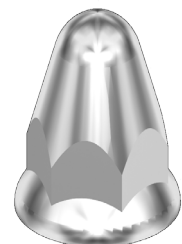
33 MM TWIST-ON ABS CHROME NUT COVERS WITH FLANGE & REFLECTOR					
ALLIANCE P/N	DIAMETER (METRIC)	HEIGHT	PACKAGING	APPLICATION	REFLECTOR
ABP 39968	33 mm	2 7/8"	Box of 250	Twist-On	Amber
ABP 39963	33 mm	2 7/8"	BP	Twist-On	Amber
ABP 18124	33 mm	2 7/8"	Box of 100	Twist-On	Amber
ABP 39998	33 mm	2 7/8"	Box of 250	Twist-On	Red
ABP 39993	33 mm	2 7/8"	BP	Twist-On	Red
ABP 18130	33 mm	2 7/8"	Box of 100	Twist-On	Red
ABP 39978	33 mm	2 7/8"	Box of 250	Twist-On	Blue
ABP 39973	33 mm	2 7/8"	BP	Twist-On	Blue
ABP 18144	33 mm	2 7/8"	Box of 100	Twist-On	Blue
ABP 39988	33 mm	2 7/8"	Box of 250	Twist-On	Purple
ABP 39983	33 mm	2 7/8"	BP	Twist-On	Purple
ABP 18154	33 mm	2 7/8"	Box of 100	Twist-On	Purple



33 MM PUSH-ON ABS CHROME NUT COVERS WITH FLANGE					
ALLIANCE P/N	DIAMETER (METRIC)	HEIGHT	PACKAGING	APPLICATION	REFLECTOR
ABP 84577	33 mm	2 7/8"	Box of 250	Push-On	N/A
ABP 84578	33 mm	2 7/8"	BP	Push-On	N/A
ABP 84579	33 mm	2 7/8"	Box of 100	Push-On	N/A



1 1/2" ABS PUSH-ON CHROME NUT COVERS (FOR USE WITH ABS WHEEL & HUB COVER SETS)					
ALLIANCE P/N	DIAMETER (INCHES)	HEIGHT	PACKAGING	APPLICATION	REFLECTOR
ABP 84143	1 1/2"	2 3/4"	BP	Push-On	N/A
ABP 84148	1 1/2"	2 3/4"	Box of 250	Push-On	N/A



1 1/2" PUSH-ON ABS CHROME NUT COVERS WITH FLANGE					
ALLIANCE P/N	DIAMETER (INCHES)	HEIGHT	PACKAGING	APPLICATION	REFLECTOR
ABP 18002	1 1/2"	2 3/4"	BP	Push-On	N/A
ABP 18004	1 1/2"	2 3/4"	Box of 100	Push-On	N/A

SPECIFICATIONS

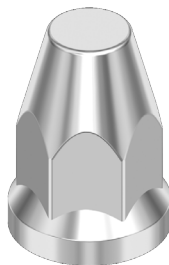
2

ABS CHROME NUT COVERS



1 1/2" PUSH-ON ABS CHROME NUT COVERS WITHOUT FLANGE

ALLIANCE P/N	DIAMETER (METRIC)	DIAMETER (INCHES)	HEIGHT	PACKAGING	APPLICATION	REFLECTOR
ABP 18011	38.1 mm	1 1/2"	2 3/4"	Box of 250	Push-On	N/A
ABP 18013	38.1 mm	1 1/2"	2 3/4"	BP	Push-On	N/A
ABP 18015	38.1 mm	1 1/2"	2 3/4"	Box of 100	Push-On	N/A



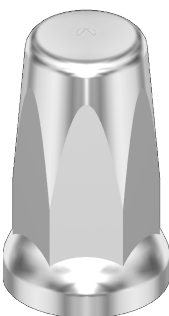
33 MM PUSH-ON ABS CHROME NUT COVERS WITH FLANGE

ALLIANCE P/N	DIAMETER (METRIC)	HEIGHT	PACKAGING	APPLICATION	REFLECTOR
ABP 18300	33 mm	2 7/8"	Box of 250	Push-On	N/A
ABP 18302	33 mm	2 7/8"	BP	Push-On	N/A



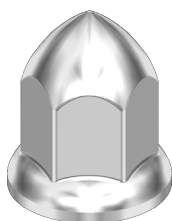
33 MM PUSH-ON ABS CHROME NUT COVERS WITH FLANGE & REFLECTOR

ALLIANCE P/N	DIAMETER (METRIC)	HEIGHT	PACKAGING	APPLICATION	REFLECTOR
ABP 84587	33 mm	2 7/8"	BP	Push-On	Amber
ABP 84588	33 mm	2 7/8"	Box of 100	Push-On	Amber
ABP 84581	33 mm	2 7/8"	BP	Push-On	Red
ABP 18234	33 mm	2 7/8"	Box of 100	Push-On	Red
ABP 84584	33 mm	2 7/8"	BP	Push-On	Blue
ABP 84585	33 mm	2 7/8"	Box of 100	Push-On	Blue
ABP 84593	33 mm	2 7/8"	BP	Push-On	Purple
ABP 84598	33 mm	2 7/8"	Box of 100	Push-On	Purple



33 MM 'TALL-BOY' PUSH-ON ABS CHROME NUT COVERS WITH FLANGE

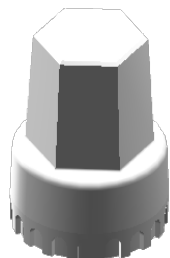
ALLIANCE P/N	DIAMETER (METRIC)	HEIGHT	PACKAGING	APPLICATION	REFLECTOR
ABP 18350	33 mm	3 5/16"	Box of 250	Push-On	N/A
ABP 18352	33 mm	3 5/16"	Box of 24	Push-On	N/A



33 MM ABS BULLET-STYLE PUSH-ON CHROME NUT COVERS

ALLIANCE P/N	DIAMETER (METRIC)	HEIGHT	PACKAGING	APPLICATION	REFLECTOR
ABP 18210	33 mm	2 1/2"	Box of 250	Push-On	N/A
ABP 18212	33 mm	2 1/2"	BP	Push-On	N/A
ABP 84579-1	33 mm	2 1/2"	Box of 100	Push-On	N/A

SPECIFICATIONS



HEX-STYLE ABS 33 MM NUT COVER, FLAT-TOP TWIST-ON WITH FLANGE					
ALLIANCE P/N	DIAMETER (METRIC)	HEIGHT	PACKAGING	APPLICATION	REFLECTOR
ABP 18170	33 mm	2 7/8"	Box of 100	Twist-On	N/A

INSTALLATION INSTRUCTIONS

2

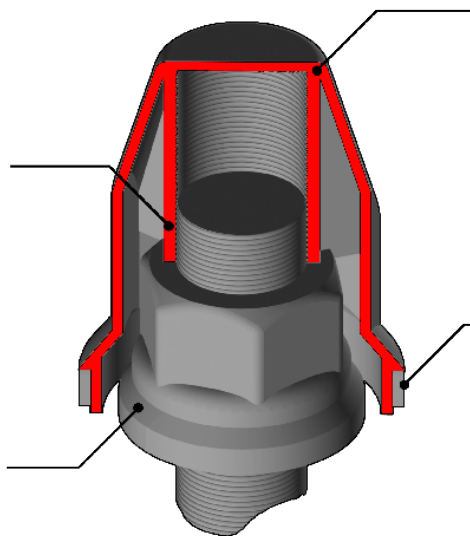
INTERNAL THREADS

Threads molded into the body of the ABS nut cover mate with the threads on the exposed stud above the lug nut. Typically, it requires at least three complete turns to assure a tight fit.

LUG NUT

ABS nut covers come in two basic sizes. 33 mm nut covers fit lug nuts on hub-piloted wheels, and 1.5" nut covers fit lug nuts on stud-piloted wheels. The amount of exposed thread above the lug nut is the only consideration when choosing twist-on or push-on styles.

The twist-on style provides the most secure attachment, but push-on is useful when limited amount of thread is available.



TWIST-ON STYLE

ABS BODY

Nut covers are molded from a high-strength automotive plastic called ABS or PC ABS. This material is impervious to rust or corrosion and will never chip or peel. ABS offers extreme durability and resistance to the elements, at an affordable price.

Infinity® ABS nut covers are ideal for vocational applications, where wheels will be exposed to extreme environments.

NOTCHED FLANGE

Twist-On ABS lug nut covers featuring the notched flange design are designed specifically for use with our line of ABS hub covers. The notches work in concert with the locking mechanism designed into the ABS hub covers to provide a secure fit. ABS nut covers with these notched flanges will work with all standard twist-on applications as well and are available as a decorative enhancement on some of our ABS nut covers.

Push-On ABS nut covers are available with both notched and smooth flanges and work equally well with any of our ABS hub covers.

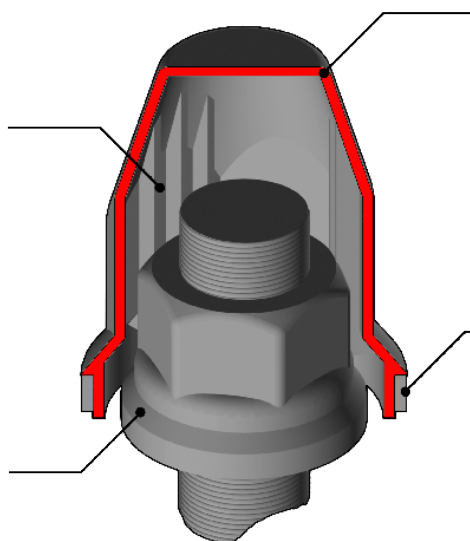
INTERNAL RIBS

Ribs molded into the body of the ABS nut cover provide a friction fit against the flat sides of the lug nuts. Repeatedly installing and removing the ABS nut cover can wear down the surface and reduce the tension against the lug nut, resulting in lost or loose nut covers.

LUG NUT

ABS nut covers come in two basic sizes. 33 mm nut covers fit lug nuts on hub-piloted wheels, and 1.5" nut covers fit lug nuts on stud-piloted wheels. The amount of exposed thread above the lug nut is the only consideration when choosing twist-on or push-on styles.

The twist-on style provides the most secure attachment, but push-on is useful when limited amount of thread is available.



PUSH-ON STYLE

ABS BODY

Nut covers are molded from a high-strength automotive plastic called ABS or PC ABS. This material is impervious to rust or corrosion, and will never chip or peel. ABS offers extreme durability and resistance to the elements, at an affordable price.

FLANGE

ABS nut covers are typically offered "with flange" and "without flange." 33 mm lug nuts for hub-piloted wheels require a nut cover with flange for a proper fit. 1.5" lug nuts do not require a flanged nut cover, but they are available as a decorative option.

FEATURES & BENEFITS

- Available in chrome or stainless steel
- Protects exposed lug and nut from dirt, moisture, salt and other damaging road debris
- OEM-grade lug nut covers in every style imaginable
- Manufactured from heavy-gauge SuperPremium® chrome-plated steel and stainless steel

REFLECTOR OPTIONS



AMBER



RED

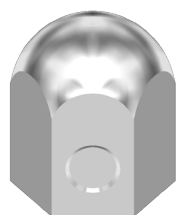


BLUE



PURPLE

SPECIFICATIONS



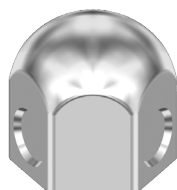
1" NUT COVERS

ALLIANCE P/N	DIAMETER (INCHES)	HEIGHT	PACKAGING	FLANGE	MATERIAL
ABP 84800	1"	1 5/16"	Box of 100	No	CH
ABP 84890	1"	1 7/8"	Box of 100	No	CH



1 1/16" NUT COVERS

ALLIANCE P/N	DIAMETER (INCHES)	HEIGHT	PACKAGING	FLANGE	MATERIAL
ABP 87210	1 1/16"	1 1/8"	Box of 100	No	CH
ABP 17511	1 1/16"	1 1/8"	Box of 100	No	SS
ABP 87213	1 1/16"	1 1/8"	BP	No	CH
ABP 17513	1 1/16"	1 1/8"	BP	No	SS



1 1/8" NUT COVERS

ALLIANCE P/N	DIAMETER (INCHES)	HEIGHT	PACKAGING	FLANGE	MATERIAL
ABP 87220	1 1/8"	1 3/16"	Box of 100	No	CH
ABP 17531	1 1/8"	1 3/16"	Box of 100	No	SS

CH - Chrome | SS - Stainless Steel

SPECIFICATIONS

2

CHROME-PLATED STEEL & STAINLESS STEEL NUT COVERS



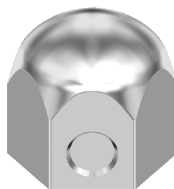
1 1/8" NUT COVERS WITH FLANGE					
ALLIANCE P/N	DIAMETER (INCHES)	HEIGHT	PACKAGING	FLANGE	MATERIAL
ABP 87290	1 1/8"	1 5/8"	Box of 100	Yes	CH
ABP 17521	1 1/8"	1 5/8"	Box of 100	Yes	SS
ABP 87293	1 1/8"	1 5/8"	BP	Yes	CH
ABP 17523	1 1/8"	1 5/8"	BP	Yes	SS



1 1/4" NUT COVERS - FOR DAYTON WHEELS					
ALLIANCE P/N	DIAMETER (INCHES)	HEIGHT	PACKAGING	FLANGE	MATERIAL
ABP 84200	1 1/4"	1 7/8"	Box of 100	No	CH
ABP 84201	1 1/4"	1 7/8"	Box of 100	No	SS
ABP 84203	1 1/4"	1 7/8"	BP	No	CH
ABP 84204	1 1/4"	1 7/8"	BP	No	SS

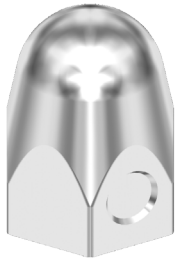


1 1/4" NUT COVERS WITH FLANGE - FOR DAYTON WHEELS					
ALLIANCE P/N	DIAMETER (INCHES)	HEIGHT	PACKAGING	FLANGE	MATERIAL
ABP 84280	1 1/4"	2"	Box of 100	Yes	CH
ABP 84291	1 1/4"	2"	Box of 100	Yes	SS
ABP 84283	1 1/4"	2"	BP	Yes	CH
ABP 84293	1 1/4"	2"	BP	Yes	SS



1 1/2" NUT COVERS					
ALLIANCE P/N	DIAMETER (INCHES)	HEIGHT	PACKAGING	FLANGE	MATERIAL
ABP 84108	1 1/2"	1 5/8"	Box of 500	No	CH
ABP 84101	1 1/2"	1 5/8"	Box of 500	No	SS
ABP 84103	1 1/2"	1 5/8"	BP	No	CH
ABP 84104	1 1/2"	1 5/8"	BP	No	SS
ABP 17574	1 1/2"	1 5/8"	Box of 100	No	CH
ABP 84109	1 1/2"	1 5/8"	Box of 100	No	SS

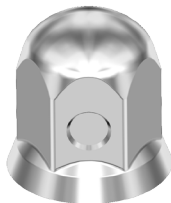
SPECIFICATIONS



1 1/2" BULLET-STYLE NUT COVERS					
ALLIANCE P/N	DIAMETER (INCHES)	HEIGHT	PACKAGING	FLANGE	MATERIAL
ABP 84400	1 1/2"	2"	Box of 500	No	CH
ABP 17591	1 1/2"	2"	Box of 500	No	SS
ABP 84403	1 1/2"	2"	BP	No	CH
ABP 84404	1 1/2"	2"	BP	No	SS
ABP 84408	1 1/2"	2"	Box of 100	No	CH
ABP 84409	1 1/2"	2"	Box of 100	No	SS



1 1/2" BULLET-STYLE NUT COVERS WITH FLANGE					
ALLIANCE P/N	DIAMETER (INCHES)	HEIGHT	PACKAGING	FLANGE	MATERIAL
ABP 84490	1 1/2"	2"	Box of 500	Yes	CH
ABP 84491	1 1/2"	2"	Box of 500	Yes	SS
ABP 84493	1 1/2"	2"	BP	Yes	CH
ABP 84494	1 1/2"	2"	BP	Yes	SS



1 1/2" NUT COVERS WITH FLANGE					
ALLIANCE P/N	DIAMETER (INCHES)	HEIGHT	PACKAGING	FLANGE	MATERIAL
ABP 84190	1 1/2"	1 15/16"	Box of 500	Yes	CH
ABP 84191	1 1/2"	1 15/16"	Box of 500	Yes	SS
ABP 84193	1 1/2"	1 15/16"	BP	Yes	CH
ABP 84194	1 1/2"	1 15/16"	BP	Yes	SS



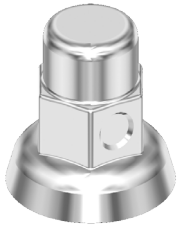
1 1/2" NUT COVERS WITH INSET REFLECTOR						
ALLIANCE P/N	DIAMETER (INCHES)	HEIGHT	PACKAGING	FLANGE	MATERIAL	REFLECTOR
ABP 84460	1 1/2"	2"	Box of 100	No	CH	Amber
ABP 84463	1 1/2"	2"	BP	No	CH	Amber
ABP 84480	1 1/2"	2"	Box of 100	No	CH	Red
ABP 84473	1 1/2"	2"	BP	No	CH	Red
ABP 84470	1 1/2"	2"	Box of 100	No	CH	Blue
ABP 84483	1 1/2"	2"	BP	No	CH	Blue
ABP 84450	1 1/2"	2"	Box of 100	No	CH	Purple
ABP 84453	1 1/2"	2"	BP	No	CH	Purple

CH - Chrome | SS - Stainless Steel

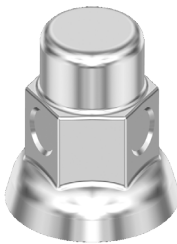
SPECIFICATIONS

2

CHROME-PLATED STEEL & STAINLESS STEEL NUT COVERS



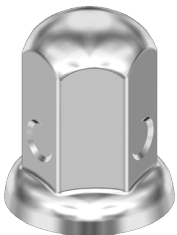
30 MM X 50 MM NUT COVERS WITH FLANGE					
ALLIANCE P/N	DIAMETER (METRIC)	HEIGHT	PACKAGING	FLANGE	MATERIAL
ABP 84500	30 mm	50 mm	Box of 500	Yes	CH
ABP 84501	30 mm	50 mm	Box of 500	Yes	SS
ABP 84503	30 mm	50 mm	BP	Yes	CH
ABP 84504	30 mm	50 mm	BP	Yes	SS
ABP 17664	30 mm	50 mm	Box of 100	Yes	CH
ABP 17665	30 mm	50 mm	Box of 100	Yes	SS



32 MM X 54 MM NUT COVERS WITH FLANGE					
ALLIANCE P/N	DIAMETER (METRIC)	HEIGHT	PACKAGING	FLANGE	MATERIAL
ABP 17700	32 mm	54 mm	Box of 500	Yes	CH
ABP 84521	32 mm	54 mm	Box of 500	Yes	SS
ABP 84523	32 mm	54 mm	BP	Yes	CH
ABP 84524	32 mm	54 mm	BP	Yes	SS

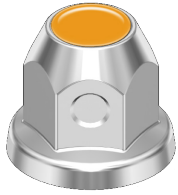


33 MM X 50 MM BULLET-STYLE NUT COVERS WITH FLANGE					
ALLIANCE P/N	DIAMETER (METRIC)	HEIGHT	PACKAGING	FLANGE	MATERIAL
ABP 84530	33 mm	50 mm	Box of 500	Yes	CH
ABP 84531	33 mm	50 mm	Box of 500	Yes	SS
ABP 84533	33 mm	50 mm	BP	Yes	CH
ABP 17803	33 mm	50 mm	BP	Yes	SS
ABP 84538	33 mm	50 mm	Box of 100	Yes	CH
ABP 84539	33 mm	50 mm	Box of 100	Yes	SS



33 MM X 64 MM 'TALL-BOY' NUT COVERS WITH FLANGE					
ALLIANCE P/N	DIAMETER (METRIC)	HEIGHT	PACKAGING	MATERIAL	
ABP 17806	33 mm	64 mm	Each or Box of 100	CH	
ABP 17807	33 mm	64 mm	Each or Box of 100	SS	

SPECIFICATIONS



33 MM X 46 MM NUT COVERS WITH FLANGE & REFLECTOR					
ALLIANCE P/N	DIAMETER (METRIC)	HEIGHT	PACKAGING	MATERIAL	REFLECTOR
ABP 84570	33 mm	46 mm	Box of 100	CH	Amber
ABP 84571	33 mm	46 mm	BP	CH	Amber
ABP 84574	33 mm	46 mm	Box of 100	CH	Red
ABP 84575	33 mm	46 mm	BP	CH	Red
ABP 84572	33 mm	46 mm	Box of 100	CH	Blue
ABP 84573	33 mm	46 mm	BP	CH	Blue
ABP 84576	33 mm	46 mm	Box of 100	CH	Purple
ABP 84567	33 mm	46 mm	BP	CH	Purple

INSTALLATION INSTRUCTIONS

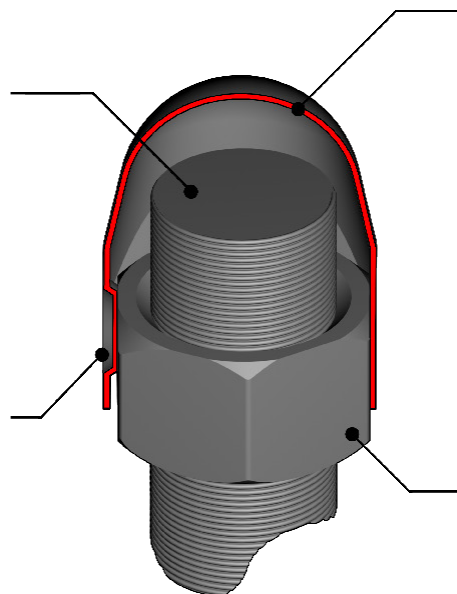
2

STUD

Using a properly designed and installed lug nut cover not only beautifies the wheels, it protects the threads on the stud from rust, corrosion and dirt, making it easier to remove and maintain the wheels.

DIMPLE

There are usually three dimples placed around the exterior of the nut cover. These dimples provide the friction fit that keeps the nut cover tightly in place. The size of a nut cover is determined by measuring from the inside surface of the dimple to the opposite "flat" surface of the nut cover.



WITHOUT FLANGE

NUT COVERS

SuperPremium® chrome quality lug nut covers are manufactured from heavy-gauge steel, then plated using our unique SuperPremium® chrome plating process. Our OEM-grade nut covers are designed to provide years of service without rusting or corroding, and the thick steel resists dents and dings better than the cheap imitators.

Many of our popular models are also available in heavy-duty 304 stainless steel, which is guaranteed never to rust.

NO FLANGE

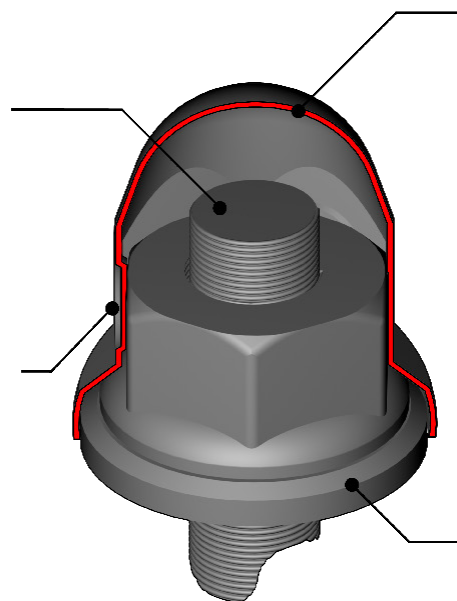
1.5" lug nuts (used on stud-piloted wheels) do not have an integral flange washer and do not need a flanged nut cover for a proper fit. However, many customers like the look of flanged nut covers, and these are available as a decorative option on many of our models.

STUD

Using a properly designed and installed lug nut cover not only beautifies the wheels, it protects the threads on the stud from rust, corrosion and dirt, making it easier to remove and maintain the wheels.

DIMPLE

There are usually three dimples placed around the exterior of the nut cover. These dimples provide the friction fit that keeps the nut cover tightly in place. The size of a nut cover is determined by measuring from the inside surface of the dimple to the opposite "flat" surface of the nut cover.



WITH FLANGE

NUT COVERS

304 stainless steel OEM-grade nut covers are designed to provide years of service without rusting or corroding, and the thick steel resists dents and dings better than the cheap imitators. 304 stainless is guaranteed never to rust.

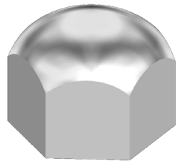
WITH FLANGE

33 mm lug nuts (used on hub-piloted wheels) have an integral flange washer at the base. This feature requires a flange on the nut cover installed.

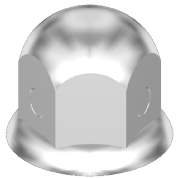
FEATURES & BENEFITS

- Manufactured from heavy-gauge steel
- Features SuperPremium® chrome finish for durability

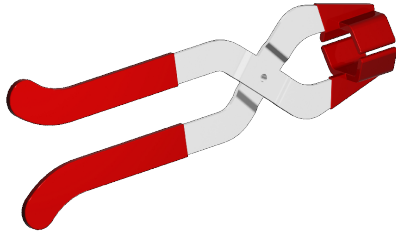
SPECIFICATIONS



CHROME BOLT COVER					
ALLIANCE P/N	DIAMETER (INCHES)	HEIGHT	PACKAGING	APPLICATION	FLANGE
ABP 84700	7/8"	1 1/8"	Box of 100	Push-On	No
ABP 87150	7/16"	5/8"	Box of 100	Push-On	No
ABP 87140	1/2"	11/16"	Box of 100	Push-On	No
ABP 87130	9/16"	11/16"	Box of 100	Push-On	No
ABP 87120	5/8"	3/4"	Box of 100	Push-On	No
ABP 87190	3/4"	15/16"	Box of 100	Push-On	No
ABP 87110	11/16"	7/8"	Box of 100	Push-On	No
ABP 87100	15/16"	1 3/8"	Box of 100	Push-On	No

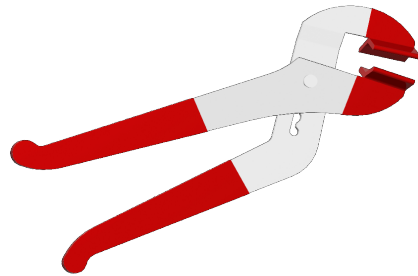


CHROME BOLT COVER WITH FLANGE					
ALLIANCE P/N	DIAMETER (INCHES)	HEIGHT	PACKAGING	APPLICATION	FLANGE
ABP 87160	3/4"	1 1/4"	Box of 100	Push-On	Yes



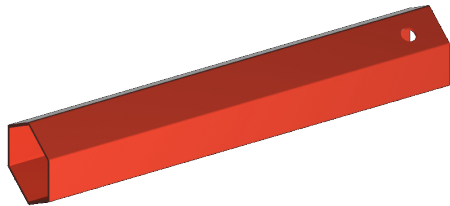
1.5" LUG NUT COVER INSTALLATION & REMOVAL TOOL

ALLIANCE P/N	DESCRIPTION
ABP 68400	Lug nut installation & removal tool for 1.5" 304 stainless or chrome nut covers. Soft vinyl coating on handles & jaws protects against damage to surface of nut cover.



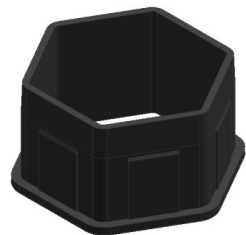
ADJUSTABLE LUG NUT COVER INSTALLATION & REMOVAL TOOL

ALLIANCE P/N	DESCRIPTION
ABP 68410	Adjustable lug nut cover installation & removal tool adjusts to work with nearly every size & shape of 304 stainless or chrome nut covers, from 7/8" to 1.5". Soft vinyl coating on handles & jaws protects against damage to surface of nut cover.



ABS LUG NUT COVER INSTALLATION & REMOVAL TOOL

ALLIANCE P/N	DESCRIPTION
ABP 39999	Handy installation & removal tool for use with all of our ABS nut covers. Molded from high-strength polymers for long life. Works with 33 mm & 1.5" ABS nut covers.



INSTALLATION ADAPTER FOR 33 MM HEX-STYLE ABS NUT COVER

ALLIANCE P/N	DESCRIPTION
ABP 15991	Installation adapter for hex-style ABS chrome nut covers, part number ABP 18170, use with ABP 39999.

HUB & HUBDOMETER CAPS

3



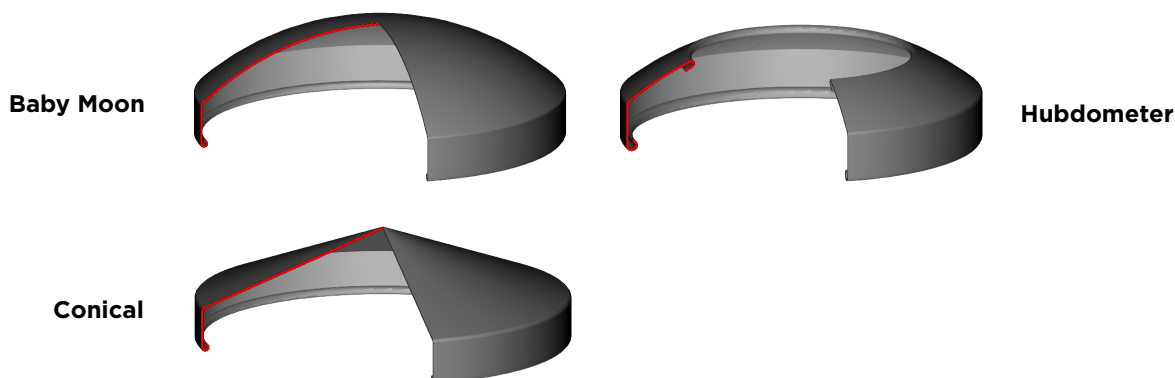
HUB & HUBDOMETER CAPS

FEATURES & BENEFITS

- Available in chrome and stainless steel
- Includes SuperPremium® chrome finish

PRODUCT FEATURES

BASIC HUB STYLES



NOTCHES - Most hub caps can be divided into four groups, based on the number and placement of notches around the base. These notches allow the hub cap to fit around the locators on the hub that center the wheel. The four basic notch styles are shown below.



4-Notch
Style



5-Notch
Style



6-Notch
Style



6-Notch
Uneven-Cut
Style

SPECIFICATIONS



BABY MOON HUB CAP FOR ALUMINUM WHEELS - NO-NOTCH

ALLIANCE P/N	STYLE	OUTSIDE DIAMETER	HEIGHT	LIP HEIGHT	FIT	MATERIAL	PACKAGING
ABP 41200	Baby Moon	8 5/8"	2 5/8"	1"	No-Notch	CH	Case
ABP 41203	Baby Moon	8 5/8"	2 5/8"	1"	No-Notch	CH	BP

CH - Chrome | SS - Stainless Steel | 1 inch = 25.4 mm

SPECIFICATIONS



MERITOR UNITIZED BABY MOON HUB CAP - NO-NOTCH							
ALLIANCE P/N	STYLE	OUTSIDE DIAMETER	HEIGHT	LIP HEIGHT	FIT	MATERIAL	PACKAGING
ABP 41010	Baby Moon	8 5/8"	2"	5/16"	No-Notch	CH	Case
ABP 41011	Baby Moon	8 5/8"	2"	5/16"	No-Notch	SS	Case
ABP 41013	Baby Moon	8 5/8"	2"	5/16"	No-Notch	CH	BP
ABP 41014	Baby Moon	8 5/8"	2"	5/16"	No-Notch	SS	BP



BABY MOON HUB CAP - 4-NOTCH							
ALLIANCE P/N	STYLE	OUTSIDE DIAMETER	HEIGHT	LIP HEIGHT	FIT	MATERIAL	PACKAGING
ABP 41400	Baby Moon	8 5/8"	2 9/16"	1"	4-Notch	CH	Case
ABP 41001	Baby Moon	8 5/8"	2 9/16"	1"	4-Notch	SS	Case
ABP 41403	Baby Moon	8 5/8"	2 9/16"	1"	4-Notch	CH	BP
ABP 41404	Baby Moon	8 5/8"	2 9/16"	1"	4-Notch	SS	BP
ABP 16164	Baby Moon	8 5/8"	2 9/16"	1"	4-Notch Uneven	CH	Case



BABY MOON HUB CAP - 4-NOTCH, SHORT LIP							
ALLIANCE P/N	STYLE	OUTSIDE DIAMETER	HEIGHT	LIP HEIGHT	FIT	MATERIAL	PACKAGING
ABP 41700	Baby Moon	8 5/8"	2 9/16"	5/16"	4-Notch, Short Lip	CH	Case
ABP 41701	Baby Moon	8 5/8"	2 9/16"	5/16"	4-Notch, Short Lip	SS	Case
ABP 41703	Baby Moon	8 5/8"	2 9/16"	5/16"	4-Notch, Short Lip	CH	BP
ABP 41704	Baby Moon	8 5/8"	2 9/16"	5/16"	4-Notch, Short Lip	SS	BP



BABY MOON HUB CAP FOR ALUMINUM WHEELS - 4-NOTCH							
ALLIANCE P/N	STYLE	OUTSIDE DIAMETER	HEIGHT	LIP HEIGHT	FIT	MATERIAL	PACKAGING
ABP 41210	Baby Moon	8 5/8"	2 3/8"	11/16"	4-Notch	CH	Case
ABP 41213	Baby Moon	8 5/8"	2 3/8"	11/16"	4-Notch	CH	BP

CH - Chrome | SS - Stainless Steel | 1 inch = 25.4 mm

HUB & HUBDOMETER CAPS

SPECIFICATIONS

3

FRONT HUB & HUBDOMETER CAPS



BABY MOON HUB CAP - 5-NOTCH							
ALLIANCE P/N	STYLE	OUTSIDE DIAMETER	HEIGHT	LIP HEIGHT	FIT	MATERIAL	PACKAGING
ABP 41500	Baby Moon	8 5/8"	2 9/16"	1"	5-Notch	CH	Case
ABP 41501	Baby Moon	8 5/8"	2 9/16"	1"	5-Notch	SS	Case
ABP 41503	Baby Moon	8 5/8"	2 9/16"	1"	5-Notch	CH	BP
ABP 41504	Baby Moon	8 5/8"	2 9/16"	1"	5-Notch	SS	BP



BABY MOON HUB CAP - 5-NOTCH, SHORT LIP							
ALLIANCE P/N	STYLE	OUTSIDE DIAMETER	HEIGHT	LIP HEIGHT	FIT	MATERIAL	PACKAGING
ABP 41800	Baby Moon	8 5/8"	2 9/16"	1/2"	5-Notch, Short Lip	CH	Case
ABP 41801	Baby Moon	8 5/8"	2 9/16"	1/2"	5-Notch, Short Lip	SS	Case
ABP 41803	Baby Moon	8 5/8"	2 9/16"	1/2"	5-Notch, Short Lip	CH	BP
ABP 41804	Baby Moon	8 5/8"	2 9/16"	1/2"	5-Notch, Short Lip	SS	BP



BABY MOON HUB CAP - 6-NOTCH							
ALLIANCE P/N	STYLE	OUTSIDE DIAMETER	HEIGHT	LIP HEIGHT	FIT	MATERIAL	PACKAGING
ABP 41600	Baby Moon	8 5/8"	2 9/16"	1"	6-Notch	CH	Case
ABP 41601	Baby Moon	8 5/8"	2 9/16"	1"	6-Notch	SS	Case
ABP 41603	Baby Moon	8 5/8"	2 9/16"	1"	6-Notch	CH	BP
ABP 41604	Baby Moon	8 5/8"	2 9/16"	1"	6-Notch	SS	BP



BABY MOON HUB CAP - 6-NOTCH, UNEVEN							
ALLIANCE P/N	STYLE	OUTSIDE DIAMETER	HEIGHT	LIP HEIGHT	FIT	MATERIAL	PACKAGING
ABP 41300	Baby Moon	8 5/8"	2 9/16"	7/8"	6-Notch, Uneven	CH	Case
ABP 41301	Baby Moon	8 5/8"	2 9/16"	7/8"	6-Notch, Uneven	SS	Case
ABP 41303	Baby Moon	8 5/8"	2 9/16"	7/8"	6-Notch, Uneven	CH	BP
ABP 41304	Baby Moon	8 5/8"	2 9/16"	7/8"	6-Notch, Uneven	SS	BP

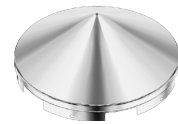
CH - Chrome | SS - Stainless Steel | 1 inch = 25.4 mm

HUB & HUBDOMETER CAPS

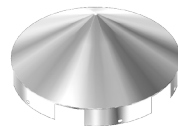
SPECIFICATIONS



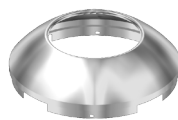
CONICAL HUB CAP - 4-NOTCH							
ALLIANCE P/N	STYLE	OUTSIDE DIAMETER	HEIGHT	LIP HEIGHT	FIT	MATERIAL	PACKAGING
ABP 16150	Conical	8 5/8"	3 5/64"	1"	4-Notch	CH	Case
ABP 16151	Conical	8 5/8"	3 5/64"	1"	4-Notch	SS	Case
ABP 16152	Conical	8 5/8"	3 5/64"	1"	4-Notch	CH	BP
ABP 16153	Conical	8 5/8"	3 5/64"	1"	4-Notch	SS	BP



CONICAL HUB CAP - 5-NOTCH							
ALLIANCE P/N	STYLE	OUTSIDE DIAMETER	HEIGHT	LIP HEIGHT	FIT	MATERIAL	PACKAGING
ABP 16170	Conical	8 5/8"	3 5/64"	1"	5-Notch	CH	Case
ABP 16171	Conical	8 5/8"	3 5/64"	1"	5-Notch	SS	Case
ABP 16172	Conical	8 5/8"	3 5/64"	1"	5-Notch	CH	BP
ABP 16173	Conical	8 5/8"	3 5/64"	1"	5-Notch	SS	BP



CONICAL HUB CAP - 6-NOTCH, UNEVEN							
ALLIANCE P/N	STYLE	OUTSIDE DIAMETER	HEIGHT	LIP HEIGHT	FIT	MATERIAL	PACKAGING
ABP 41310	Conical	8 5/8"	3 5/64"	7/8"	6-Notch, Uneven	CH	Case
ABP 16241	Conical	8 5/8"	3 5/64"	7/8"	6-Notch, Uneven	SS	Case
ABP 16242	Conical	8 5/8"	3 5/64"	7/8"	6-Notch, Uneven	CH	BP
ABP 16243	Conical	8 5/8"	3 5/64"	7/8"	6-Notch, Uneven	SS	BP



HUBDOMETER CAP - 4-NOTCH							
ALLIANCE P/N	STYLE	OUTSIDE DIAMETER	HEIGHT	LIP HEIGHT	FIT	MATERIAL	PACKAGING
ABP 41410	Hubdometer	8 5/8"	2 9/16"	1"	4-Notch	CH	Case
ABP 41411	Hubdometer	8 5/8"	2 9/16"	1"	4-Notch	SS	Case
ABP 41413	Hubdometer	8 5/8"	2 9/16"	1"	4-Notch	CH	BP
ABP 41414	Hubdometer	8 5/8"	2 9/16"	1"	4-Notch	SS	BP

CH - Chrome | SS - Stainless Steel | 1 inch = 25.4 mm

3

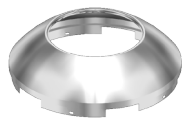
FRONT HUB & HUBDOMETER CAPS

HUB & HUBDOMETER CAPS

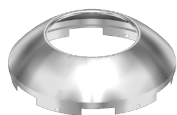
SPECIFICATIONS

3

FRONT HUB & HUBDOMETER CAPS



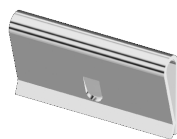
HUBDOMETER CAP - 5-NOTCH							
ALLIANCE P/N	STYLE	OUTSIDE DIAMETER	HEIGHT	LIP HEIGHT	FIT	MATERIAL	PACKAGING
ABP 16510	Hubdometer	8 5/8"	2 9/16"	7/16"	5-Notch	CH	Case
ABP 41511	Hubdometer	8 5/8"	2 9/16"	7/16"	5-Notch	SS	Case
ABP 16512	Hubdometer	8 5/8"	2 9/16"	7/16"	5-Notch	CH	BP
ABP 41513	Hubdometer	8 5/8"	2 9/16"	7/16"	5-Notch	SS	BP



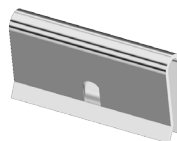
HUBDOMETER CAP - 6-NOTCH							
ALLIANCE P/N	STYLE	OUTSIDE DIAMETER	HEIGHT	LIP HEIGHT	FIT	MATERIAL	PACKAGING
ABP 41610	Hubdometer	8 5/8"	2 9/16"	1"	6-Notch	CH	Case
ABP 41611	Hubdometer	8 5/8"	2 9/16"	1"	6-Notch	SS	Case
ABP 41613	Hubdometer	8 5/8"	2 9/16"	1"	6-Notch	CH	BP
ABP 41614	Hubdometer	8 5/8"	2 9/16"	1"	6-Notch	SS	BP



HUBDOMETER CAP - 6-NOTCH, UNEVEN							
ALLIANCE P/N	STYLE	OUTSIDE DIAMETER	HEIGHT	LIP HEIGHT	FIT	MATERIAL	PACKAGING
ABP 16530	Hubdometer	8 5/8"	2 9/16"	7/16"	6-Notch, Uneven	CH	Case
ABP 16531	Hubdometer	8 5/8"	2 9/16"	7/16"	6-Notch, Uneven	SS	Case
ABP 16532	Hubdometer	8 5/8"	2 9/16"	7/16"	6-Notch, Uneven	CH	BP
ABP 41913	Hubdometer	8 5/8"	2 9/16"	7/16"	6-Notch, Uneven	SS	BP



ABP 41950



ABP 41960



FRONT HUB CAP CLIPS	
ALLIANCE P/N	DESCRIPTION
ABP 41940	Clips for front hub caps. Package of 4.
ABP 41950	Clips for front hub caps. Package of 5.
ABP 41960	Clips for Meritor Disposable Axle front hub caps (only). Package of 4.

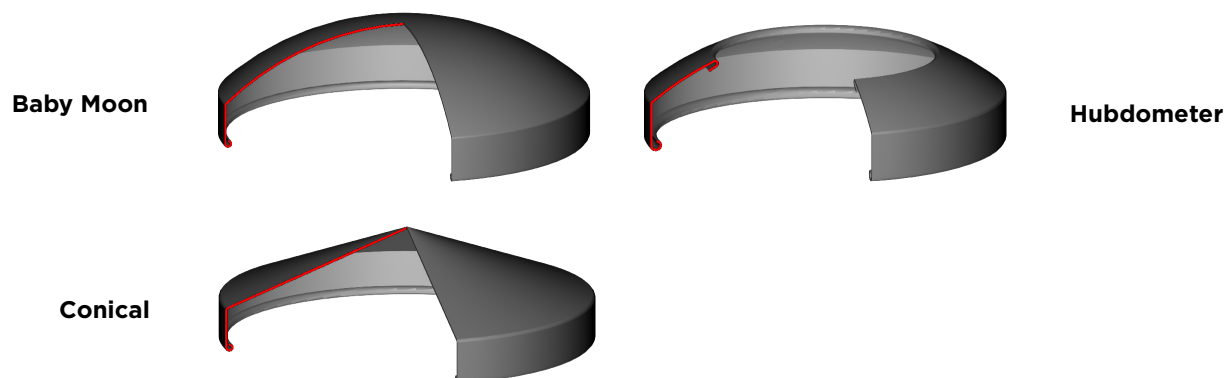
CH - Chrome | SS - Stainless Steel | 1 inch = 25.4 mm

FEATURES & BENEFITS

- Manufactured from heavy-gauge steel and 304 stainless steel
- Includes SuperPremium® chrome finish

PRODUCT FEATURES

BASIC HUB STYLES



NOTCHES - Most hub caps can be divided into four groups, based on the number and placement of notches around the base. These notches allow the hub cap to fit around the locators on the hub that center the wheel. The four basic notch styles are shown below.



**4-Notch
Style**



**5-Notch
Style**



**6-Notch
Style**



**6-Notch
Uneven-Cut
Style**

HUB & HUBDOMETER CAPS

SPECIFICATIONS

3

REAR HUB & HUBDOMETER CAPS



**6 1/2" BABY MOON HUB CAP
FOR NAVISTAR-INTERNATIONAL 4000-SERIES TRUCKS**

ALLIANCE P/N	STYLE	INSIDE DIAMETER	AXLE SIZE	HEIGHT	LIP HEIGHT	FITS STUD SIZE	MATERIAL	PACKAGING
ABP 43500	Baby Moon	6 1/2"	N/A	2 1/2"	19/16"	N/A	CH	Each
ABP 43501	Baby Moon	6 1/2"	N/A	2 1/2"	19/16"	N/A	SS	Each
ABP 43503	Baby Moon	6 1/2"	N/A	2 1/2"	19/16"	N/A	CH	BP
ABP 43504	Baby Moon	6 1/2"	N/A	2 1/2"	19/16"	N/A	SS	BP



7 1/4" BABY MOON HUB CAP FOR 7 1/4" AXLE

ALLIANCE P/N	STYLE	INSIDE DIAMETER	AXLE SIZE	HEIGHT	LIP HEIGHT	FITS STUD SIZE	MATERIAL	PACKAGING
ABP 43100	Baby Moon	7 1/4"	7 1/4"	2 5/8"	1 3/16"	1/2" or 9/16"	CH	Each
ABP 43101	Baby Moon	7 1/4"	7 1/4"	2 5/8"	1 3/16"	1/2" or 9/16"	SS	Each
ABP 43103	Baby Moon	7 1/4"	7 1/4"	2 5/8"	1 3/16"	1/2" or 9/16"	CH	BP
ABP 43104	Baby Moon	7 1/4"	7 1/4"	2 5/8"	1 3/16"	1/2" or 9/16"	SS	BP



8" BABY MOON HUB CAP FOR 8 1/4" AXLE

ALLIANCE P/N	STYLE	INSIDE DIAMETER	AXLE SIZE	HEIGHT	LIP HEIGHT	FITS STUD SIZE	MATERIAL	PACKAGING
ABP 43200	Baby Moon	8"	8 1/4"	2 7/8"	1 1/16"	5/8"	CH	Each
ABP 43201	Baby Moon	8"	8 1/4"	2 7/8"	1 1/16"	5/8"	SS	Each
ABP 43203	Baby Moon	8"	8 1/4"	2 7/8"	1 1/16"	5/8"	CH	BP
ABP 43204	Baby Moon	8"	8 1/4"	2 7/8"	1 1/16"	5/8"	SS	BP

CH - Chrome | SS - Stainless Steel | 1 inch = 25.4 mm

HUB & HUBDOMETER CAPS

SPECIFICATIONS



8 3/16" BABY MOON HUB CAP FOR 8 1/2" AXLE								
ALLIANCE P/N	STYLE	INSIDE DIAMETER	AXLE SIZE	HEIGHT	LIP HEIGHT	FITS STUD SIZE	MATERIAL	PACKAGING
ABP 43300	Baby Moon	8 3/16"	8 1/2"	2 7/8"	7/8"	3/4"	CH	Each
ABP 43301	Baby Moon	8 3/16"	8 1/2"	2 7/8"	7/8"	3/4"	SS	Each
ABP 43303	Baby Moon	8 3/16"	8 1/2"	2 7/8"	7/8"	3/4"	CH	BP
ABP 43304	Baby Moon	8 3/16"	8 1/2"	2 7/8"	7/8"	3/4"	SS	BP
ABP 43320	Baby Moon	8 3/16"	8 1/2"	2 7/8"	13/16"	1 1/16" Nut	CH	Each
ABP 43321	Baby Moon	8 3/16"	8 1/2"	2 7/8"	13/16"	1 1/16" Nut	SS	Each
ABP 43323	Baby Moon	8 3/16"	8 1/2"	2 7/8"	13/16"	1 1/16" Nut	CH	BP
ABP 43324	Baby Moon	8 3/16"	8 1/2"	2 7/8"	13/16"	1 1/16" Nut	SS	BP



8 5/8" BABY MOON HUB CAP FOR 8 5/8" AXLE INTERNATIONAL TRUCKS WITH EXTRA LENGTH STUDS								
ALLIANCE P/N	STYLE	INSIDE DIAMETER	AXLE SIZE	HEIGHT	LIP HEIGHT	FITS STUD SIZE	MATERIAL	PACKAGING
ABP 16954	Baby Moon	8 5/16"	8 5/8"	3 1/8"	13/8"	Up to 1"	CH	Each
ABP 16955	Baby Moon	8 5/16"	8 5/8"	3 1/8"	13/8"	Up to 1"	SS	Each
ABP 16956	Baby Moon	8 5/16"	8 5/8"	3 1/8"	13/8"	Up to 1"	CH	BP
ABP 16957	Baby Moon	8 5/16"	8 5/8"	3 1/8"	13/8"	Up to 1"	SS	BP



8 5/8" BABY MOON HUB CAP FOR 9" AXLE MACK 40,000+ LB 1999 & NEWER								
ALLIANCE P/N	STYLE	INSIDE DIAMETER	AXLE SIZE	HEIGHT	LIP HEIGHT	FITS STUD SIZE	MATERIAL	PACKAGING
ABP 43350	Baby Moon	8 5/8"	9"	2 3/4"	1 1/16"	N/A	CH	Each
ABP 43351	Baby Moon	8 5/8"	9"	2 3/4"	1 1/16"	N/A	SS	Each
ABP 16992	Baby Moon	8 5/8"	9"	2 3/4"	1 1/16"	N/A	CH	BP
ABP 43354	Baby Moon	8 5/8"	9"	2 3/4"	1 1/16"	N/A	SS	BP



8 11/16" BABY MOON HUB CAP FOR MACK 40,000+ LB 1998 & OLDER								
ALLIANCE P/N	STYLE	INSIDE DIAMETER	AXLE SIZE	HEIGHT	LIP HEIGHT	FITS STUD SIZE	MATERIAL	PACKAGING
ABP 43400	Baby Moon	8 11/16"	N/A	2 11/16"	1"	N/A	CH	Each
ABP 43401	Baby Moon	8 11/16"	N/A	2 11/16"	1"	N/A	SS	Each
ABP 43403	Baby Moon	8 11/16"	N/A	2 11/16"	1"	N/A	CH	BP
ABP 43404	Baby Moon	8 11/16"	N/A	2 11/16"	1"	N/A	SS	BP

CH - Chrome | SS - Stainless Steel | 1 inch = 25.4 mm

3

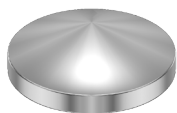
REAR HUB & HUBDOMETER CAPS

HUB & HUBDOMETER CAPS

SPECIFICATIONS

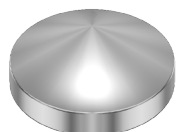
3

REAR HUB & HUBDOMETER CAPS



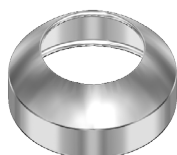
8 1/8" CONICAL HUB CAP FOR 8 1/4" AXLE

ALLIANCE P/N	STYLE	INSIDE DIAMETER	AXLE SIZE	HEIGHT	LIP HEIGHT	FITS STUD SIZE	MATERIAL	PACKAGING
ABP 16940	Conical	8 1/8"	8 1/4"	2 3/4"	1 1/16"	5/8"	CH	Each
ABP 16941	Conical	8 1/8"	8 1/4"	2 3/4"	1 1/16"	5/8"	SS	Each
ABP 16942	Conical	8 1/8"	8 1/4"	2 3/4"	1 1/16"	5/8"	CH	BP
ABP 16943	Conical	8 1/8"	8 1/4"	2 3/4"	1 1/16"	5/8"	SS	BP



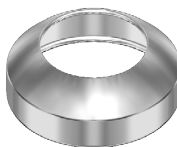
8 5/16" CONICAL HUB CAP FOR 8 1/2" AXLE

ALLIANCE P/N	STYLE	INSIDE DIAMETER	AXLE SIZE	HEIGHT	LIP HEIGHT	FITS STUD SIZE	MATERIAL	PACKAGING
ABP 16960	Conical	8 5/16"	8 1/2"	2 3/4"	7/8"	3/4"	CH	Each
ABP 16961	Conical	8 5/16"	8 1/2"	2 3/4"	7/8"	3/4"	SS	Each
ABP 16962	Conical	8 5/16"	8 1/2"	2 3/4"	7/8"	3/4"	CH	BP
ABP 16963	Conical	8 5/16"	8 1/2"	2 3/4"	7/8"	3/4"	SS	BP



7 1/4" HUBDOMETER HUB CAP FOR 7 1/4" AXLE

ALLIANCE P/N	STYLE	INSIDE DIAMETER	AXLE SIZE	HEIGHT	LIP HEIGHT	FITS STUD SIZE	MATERIAL	PACKAGING
ABP 43110	Hubdrometer	7 1/4"	7 1/4"	2 1/8"	1 3/16"	1/2" or 9/16"	CH	Each
ABP 43111	Hubdrometer	7 1/4"	7 1/4"	2 1/8"	1 3/16"	1/2" or 9/16"	SS	Each
ABP 43113	Hubdrometer	7 1/4"	7 1/4"	2 1/8"	1 3/16"	1/2" or 9/16"	CH	BP
ABP 43114	Hubdrometer	7 1/4"	7 1/4"	2 1/8"	1 3/16"	1/2" or 9/16"	SS	BP



8 1/8" HUBDOMETER CAP FOR 8 1/4" AXLE

ALLIANCE P/N	STYLE	INSIDE DIAMETER	AXLE SIZE	HEIGHT	LIP HEIGHT	FITS STUD SIZE	MATERIAL	PACKAGING
ABP 43210	Hubdrometer	8 1/8"	8 1/4"	2 1/8"	1 1/16"	5/8"	CH	Each
ABP 43211	Hubdrometer	8 1/8"	8 1/4"	2 1/8"	1 1/16"	5/8"	SS	Each
ABP 43213	Hubdrometer	8 1/8"	8 1/4"	2 1/8"	1 1/16"	5/8"	CH	BP
ABP 43214	Hubdrometer	8 1/8"	8 1/4"	2 1/8"	1 1/16"	5/8"	SS	BP

CH - Chrome | SS - Stainless Steel | 1 inch = 25.4 mm

SPECIFICATIONS



8 1/8" HUBDOMETER CAP FOR 8 1/2" AXLE								
ALLIANCE P/N	STYLE	INSIDE DIAMETER	AXLE SIZE	HEIGHT	LIP HEIGHT	FITS STUD SIZE	MATERIAL	PACKAGING
ABP 43310	Hubdrometer	8 1/8"	8 1/2"	2 1/2"	7/8"	3/4"	CH	Each
ABP 17131	Hubdrometer	8 1/8"	8 1/2"	2 1/2"	7/8"	3/4"	SS	Each
ABP 43313	Hubdrometer	8 1/8"	8 1/2"	2 1/2"	7/8"	3/4"	CH	BP
ABP 17133	Hubdrometer	8 1/8"	8 1/2"	2 1/2"	7/8"	3/4"	SS	BP

FEATURES & BENEFITS

- SuperPremium® chrome and stainless steel
- OEM-grade products

SPECIFICATIONS



TRAILER HUB CAP							
ALLIANCE P/N	STYLE	INSIDE DIAMETER	AXLE SIZE	HEIGHT	FITS STUD SIZE	MATERIAL	PACKAGING
ABP 42100	Baby Moon	9 9/16"	N/A	2 5/8"	N/A	CH	Each
ABP 42101	Baby Moon	9 9/16"	N/A	2 5/8"	N/A	SS	Each
ABP 42103	Baby Moon	9 9/16"	N/A	2 5/8"	N/A	CH	BP
ABP 42104	Baby Moon	9 9/16"	N/A	2 5/8"	N/A	SS	BP



TRAILER ACCESSORIES	
ALLIANCE P/N	DESCRIPTION
ABP 42940	Replacement clips for trailer hub cap. Package of 3.
ABP 16750	Mounting bracket for trailer axle. Mounts a standard 8.25" hub cap.

INSTALLATION INSTRUCTIONS

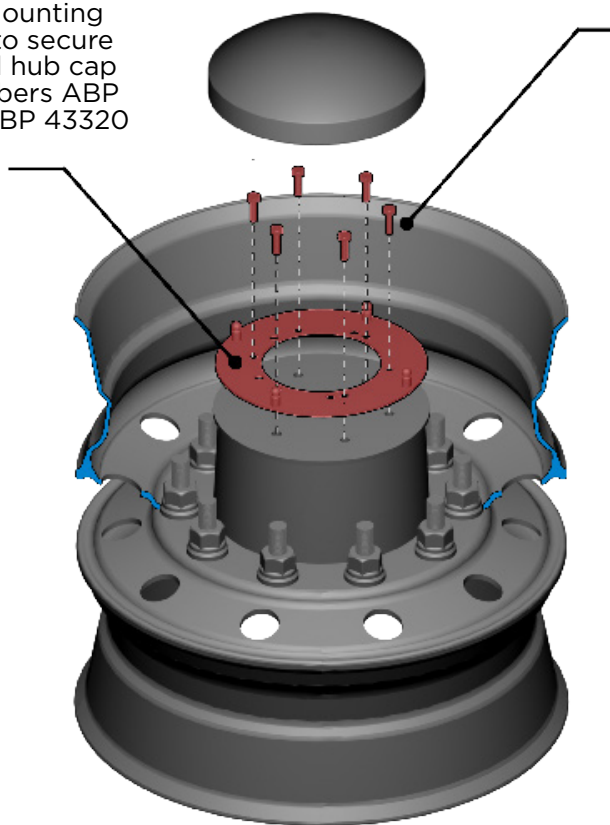
3

MOUNTING BRACKET - The mounting bracket attaches to the hub face using the existing bolts.

Once attached, the mounting bracket can be used to secure a standard rear wheel hub cap such as our part numbers ABP 43200, ABP 43201, ABP 43320 and ABP 43321.

HUB BOLTS - Remove several hub plate bolts and re-attach through the pre-drilled Mounting Bracket holes to secure Bracket to the hub.

The hub plate is pre-drilled to accommodate a wide variety of standard trailer axle hubs and can be easily modified in the field to work with almost any axle style or manufacture.



AXLE COVERS

4



FEATURES & BENEFITS

- Available in chrome and stainless steel
- Engineered to fit most popular axles
- Protect your axles from dirt, debris and moisture, prolonging the life and appearance of your truck

SPECIFICATIONS



STUD-PILOTED FRONT AXLE COVER					
ALLIANCE P/N	HEIGHT	LUG HOLES	HUB CAP STYLE	MATERIAL	APPLICATION
ABP 81001	3.5"	(5) 1.25" & (5) 1.75"	Baby Moon	CH	Stud-Piloted
ABP 81011	3.5"	(5) 1.25" & (5) 1.75"	Baby Moon	SS	Stud-Piloted



STUD-PILOTED FRONT AXLE COVER - REMOVABLE					
ALLIANCE P/N	HEIGHT	LUG HOLES	HUB CAP STYLE	MATERIAL	APPLICATION
ABP 81021	3.5"	(5) 1.25" & (5) 1.75"	Baby Moon (removable)	CH	Stud-Piloted



HUB-PILOTED FRONT AXLE COVER - REMOVABLE					
ALLIANCE P/N	HEIGHT	LUG HOLES	HUB CAP STYLE	MATERIAL	APPLICATION
ABP 21015	3.5"	(5) 1" & (5) 1.88"	Baby Moon (removable)	CH	Hub-Piloted
ABP 21021	3.5"	(5) 1" & (5) 1.88"	Baby Moon (removable)	SS	Hub-Piloted



HUB-PILOTED FRONT AXLE COVER - REMOVABLE					
ALLIANCE P/N	HEIGHT	LUG HOLES	HUB CAP STYLE	MATERIAL	APPLICATION
ABP 21030	3.5"	(5) 1" & (5) 1.88"	Hubdometer (removable)	CH	Hub-Piloted

SPECIFICATIONS



HUB-PILOTED FRONT AXLE COVER - TALL					
ALLIANCE P/N	HEIGHT	LUG HOLES	HUB CAP STYLE	MATERIAL	APPLICATION
ABP 21020	5.5"	(5) 1" & (5) 1.88"	Baby Moon (removable)	CH	Hub-Piloted

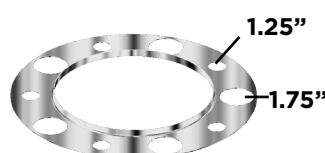


HUB-PILOTED FRONT AXLE COVER					
ALLIANCE P/N	HEIGHT	LUG HOLES	HUB CAP STYLE	MATERIAL	APPLICATION
ABP 21010	3.5"	(5) 1" & (5) 1.88"	Baby Moon	CH	Hub-Piloted
ABP 21011	3.5"	(5) 1" & (5) 1.88"	Baby Moon	SS	Hub-Piloted

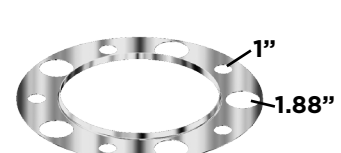
BEAUTY RINGS				
ALLIANCE P/N	LUG HOLES	BOLT CIRCLE	MATERIAL	APPLICATION
ABP 29120	(8) 1.25"	275 mm/10.83"	CH	Hub-Piloted
ABP 29211	(8) 1.25"	275 mm/10.83"	SS	Hub-Piloted
ABP 29210	(5) 1.25" & (5) 1.75"	285 mm/11.25"	CH	Stud-Piloted
ABP 29221	(5) 1.25" & (5) 1.75"	285 mm/11.25"	SS	Stud-Piloted
ABP 13980	(5) 1" & (5) 1.88"	285 mm/11.25"	CH	Hub-Piloted
ABP 13981	(5) 1" & (5) 1.88"	285 mm/11.25"	SS	Hub-Piloted



ABP 29120
ABP 29211



ABP 29210
ABP 29221

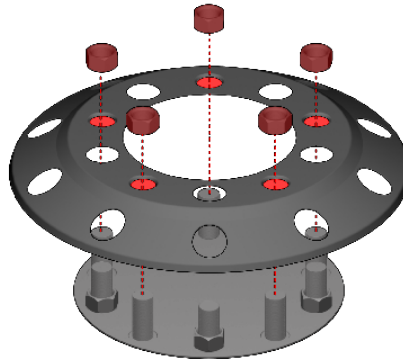


ABP 13980
ABP 13981

INSTALLATION INSTRUCTIONS

To maximize the life and look of your new Alliance wheel and hub covers, it is important not to over-torque the lug nuts during installation. Over-torquing can result in premature failure of the product or the development of cracks around the lug holes due to compression and metal fatigue.

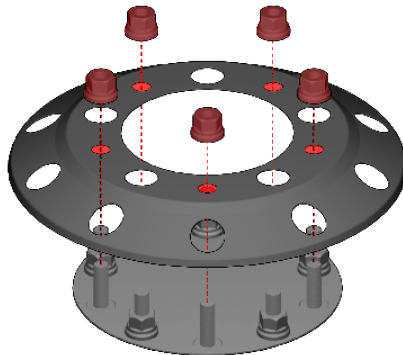
STUD-PILOTED - Products designated for stud-piloted wheels typically have 10 lug holes. Five of the holes are 1.25" in diameter and have a slight taper that conforms to the shape of the lug nut. The other five lug holes are 1.75" in diameter and are sized to slip over the existing lug nuts without removal.



INSTALLATION TIP - Alliance products are designed to install easily, without removing the wheel or all fasteners. Simply remove five of the lug nuts, slip the wheel cover over the wheel and secure with the lug nuts you removed earlier.

To prevent damaging the product, avoid over-torquing the lug nuts. Do not exceed the wheel manufacturer's recommendations.

HUB-PILOTED - Products designated for hub-piloted wheels typically have 10 lug holes. Five of the holes are 1" in diameter to fit over the lug bolt only, and five lug holes are 1.88" in diameter and are sized to slip over the existing lug nuts without removal.



INSTALLATION TIP - Alliance products are designed to install easily, without removing the wheel or all fasteners. Simply remove five of the lug nuts, slip the wheel cover over the wheel and secure with the lug nuts you removed earlier.

To prevent damaging the product, avoid over-torquing the lug nuts. Do not exceed the wheel manufacturer's recommendations.

Class 7 and 8 truck wheels attach to the axle and hub in one of two ways: hub-piloted or stud-piloted. Aluminum wheels are typically hub-piloted, and steel wheels are typically stud-piloted. When determining which product to select for your application, it is important to correctly identify the type of wheel and the method of installation for your wheels for a secure and accurate fit. Products that attach using the lug nuts to secure the product to the wheel, such as beauty rings, hub covers and wheel simulators, specify which application they are intended for. This does not apply, however, to Alliance's line of ABS axle covers, which are universal and can mount to any style wheel.

FEATURES & BENEFITS

- Available in chrome and stainless steel
- Engineered to fit most popular axles
- Protect your axles from dirt, debris and moisture, prolonging the life and appearance of your truck

SPECIFICATIONS



BABY MOON REAR AXLE COVER				
ALLIANCE P/N	HEIGHT	LUG HOLES	HUB CAP STYLE	MATERIAL
ABP 22130	9.5"	N/A	Baby Moon (non-removable)	CH
ABP 22131	9.5"	N/A	Baby Moon (non-removable)	SS



ABP 43300
ABP 43301

BABY MOON REAR AXLE COVER - REMOVABLE				
ALLIANCE P/N	HEIGHT	LUG HOLES	HUB CAP STYLE	MATERIAL
ABP 22150	9.5"	N/A	Baby Moon (removable)	CH
ABP 22151	9.5"	N/A	Baby Moon (removable)	SS

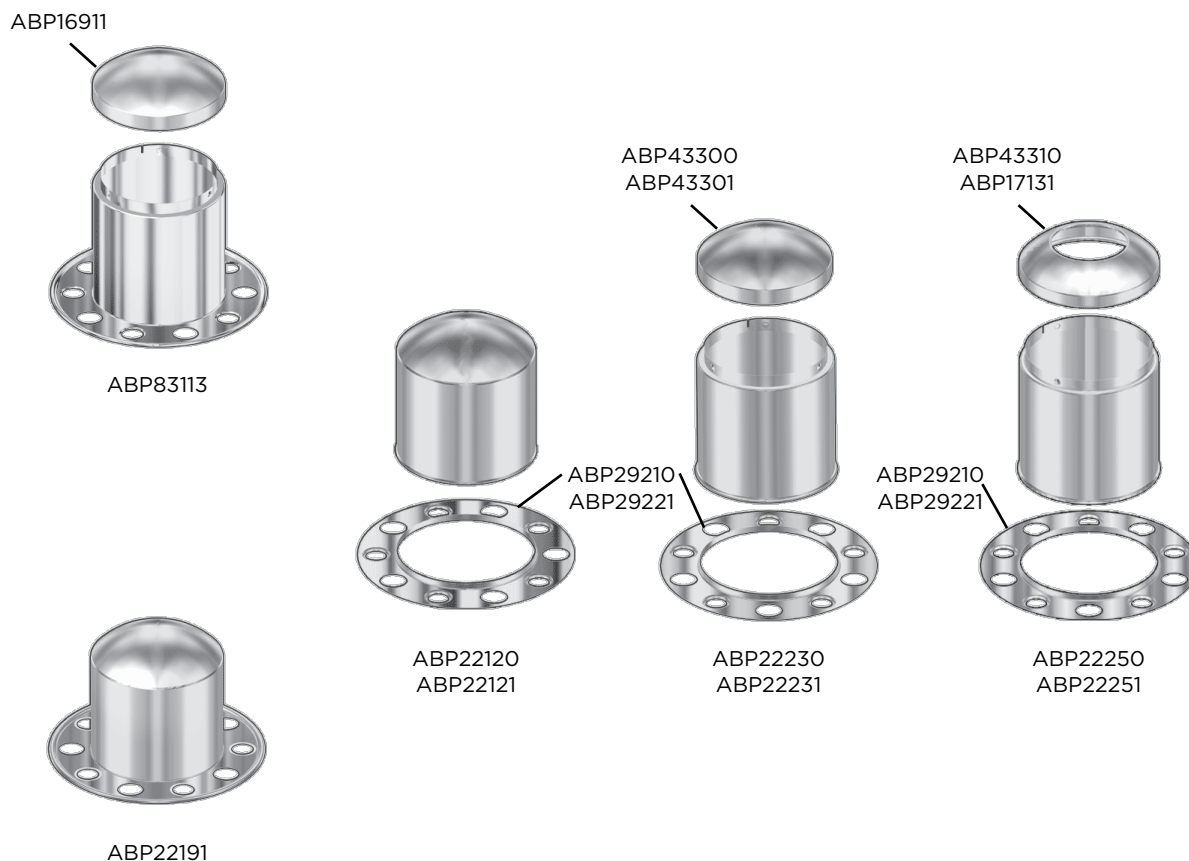
SPECIFICATIONS

4

REAR AXLE ACCESSORY COMPONENTS

10-LUG STUD-PILOTED COVER KITS FOR STUD-PILOTED WHEELS

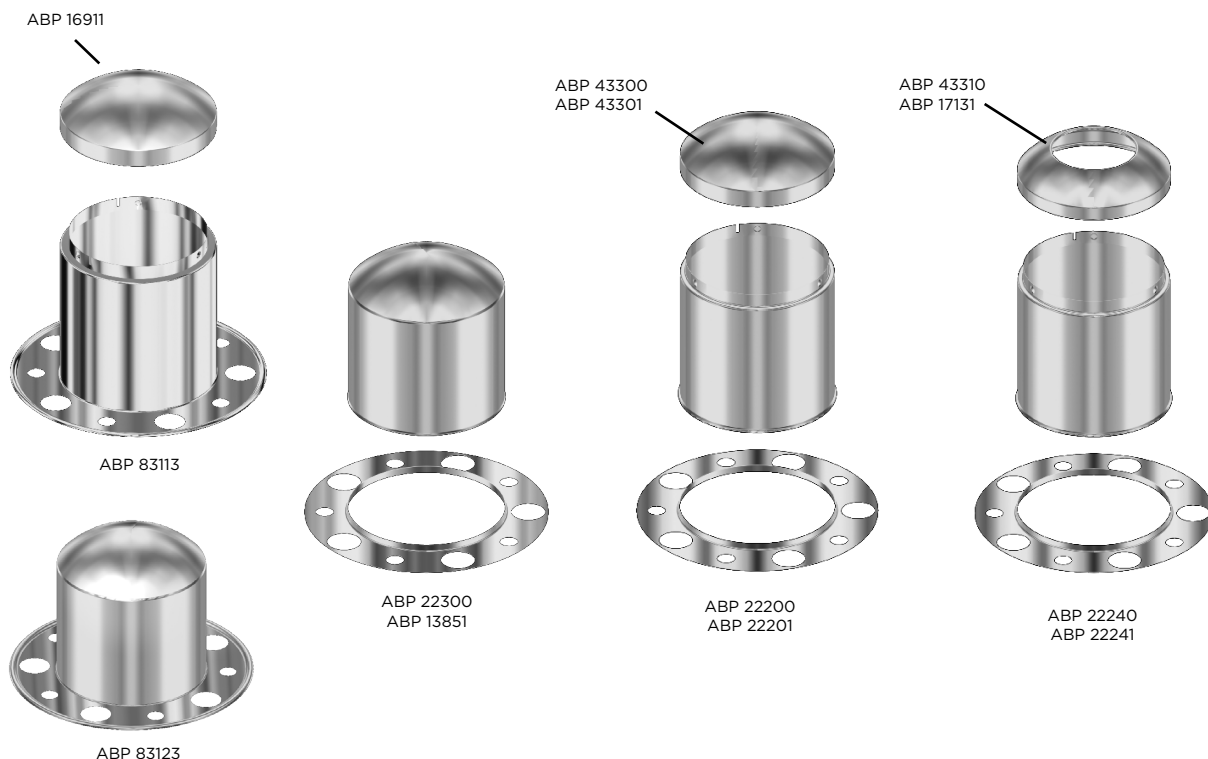
ALLIANCE P/N	HEIGHT	LUG HOLES	HUB CAP STYLE	MATERIAL	APPLICATION
ABP 83113	9"	(5) 1.25" & (5) 1.75"	Baby Moon (removable)	SS	Stud-Piloted Wheels
ABP 22191	9"	(5) 1.25" & (5) 1.75"	Baby Moon (non-removable)	SS	Stud-Piloted Wheels
ABP 22120	9.5"	(5) 1.25" & (5) 1.75"	Baby Moon (non-removable)	CH	Stud-Piloted Wheels
ABP 22121	9.5"	(5) 1.25" & (5) 1.75"	Baby Moon (non-removable)	SS	Stud-Piloted Wheels
ABP 22230	9.5"	(5) 1.25" & (5) 1.75"	Baby Moon (removable)	CH	Stud-Piloted Wheels
ABP 22231	9.5"	(5) 1.25" & (5) 1.75"	Baby Moon (removable)	SS	Stud-Piloted Wheels
ABP 22250	9.5"	(5) 1.25" & (5) 1.75"	Hubdometer (removable)	CH	Stud-Piloted Wheels
ABP 22251	9.5"	(5) 1.25" & (5) 1.75"	Hubdometer (removable)	SS	Stud-Piloted Wheels



CH - Chrome | SS - Stainless Steel

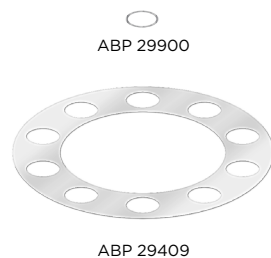
SPECIFICATIONS

10-LUG HUB COVER KITS FOR HUB-PILOTED WHEELS					
ALLIANCE P/N	HEIGHT	LUG HOLES	HUB CAP STYLE	MATERIAL	APPLICATION
ABP 83113	9"	(5) 1" & (5) 1.88"	Baby Moon (removable)	SS	Hub-Piloted Wheels
ABP 83123	9"	(5) 1" & (5) 1.88"	Baby Moon (non-removable)	SS	Hub-Piloted Wheels
ABP 22300	9.5"	(5) 1" & (5) 1.88"	Baby Moon (non-removable)	CH	Hub-Piloted Wheels
ABP 13851	9.5"	(5) 1" & (5) 1.88"	Baby Moon (non-removable)	SS	Hub-Piloted Wheels
ABP 22200	9.5"	(5) 1" & (5) 1.88"	Baby Moon (removable)	CH	Hub-Piloted Wheels
ABP 22201	9.5"	(5) 1" & (5) 1.88"	Baby Moon (removable)	SS	Hub-Piloted Wheels
ABP 22240	9.5"	(5) 1" & (5) 1.88"	Hubdometer (removable)	CH	Hub-Piloted Wheels
ABP 22241	9.5"	(5) 1" & (5) 1.88"	Hubdometer (removable)	SS	Hub-Piloted Wheels
ABP 83193	9.5"	(5) 1" & (5) 1.88"	Conical (removable) Not Pictured	CH	Hub-Piloted Wheels
ABP 83203	9.5"	(5) 1" & (5) 1.88"	Conical (removable) Not Pictured	SS	Hub-Piloted Wheels



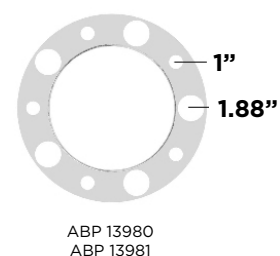
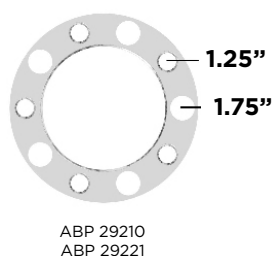
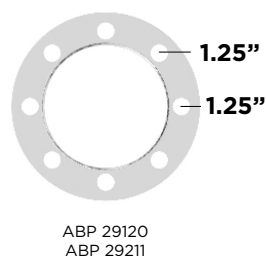
CH - Chrome | SS - Stainless Steel

SPECIFICATIONS



AXLE COVER ACCESSORY PARTS	
ALLIANCE P/N	DESCRIPTION
ABP 29900	Steel washer for beauty ring. Package of 5 pieces.
ABP 29409	Plastic rim protector (for steel hub covers).

BEAUTY RINGS			
ALLIANCE P/N	LUG HOLES	MATERIAL	APPLICATION
ABP 29120	(8) 1.25"	CH	Hub-Piloted
ABP 29211	(8) 1.25"	SS	Hub-Piloted
ABP 29210	(5) 1.25" & (5) 1.75"	CH	Stud-Piloted
ABP 29221	(5) 1.25" & (5) 1.75"	SS	Stud-Piloted
ABP 13980	(5) 1" & (5) 1.88"	CH	Hub-Piloted
ABP 13981	(5) 1" & (5) 1.88"	SS	Hub-Piloted



INSTALLATION INSTRUCTIONS

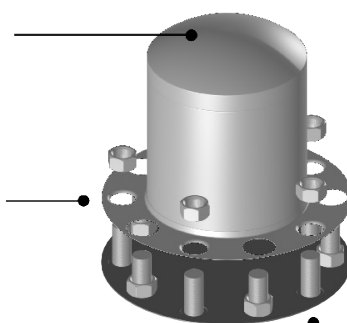
To maximize the life and look of your new Alliance wheel and hub covers, it is important not to over-torque the lug nuts during installation. Over-torquing can result in premature failure of the product or the development of cracks around the lug holes due to compression and metal fatigue.

REMOVABLE CAPS - Many of our rear wheel products feature a removable cap, allowing easy access to the hub for maintenance.

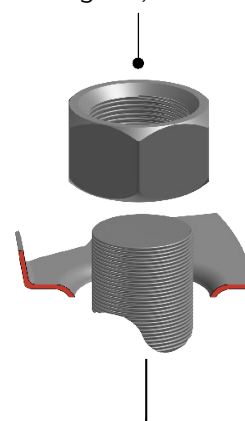
LUG HOLES - There are usually 10 lug holes located around the perimeter of the beauty ring. For stud-piloted applications, there are five 1.25" tapered holes and five 1.75" flat holes that slip over existing lug nuts.

33 MM LUG NUTS - Most hub-piloted wheels use a 33 mm lug nut, with a flat face. The lug nuts usually incorporate an integral washer at the base.

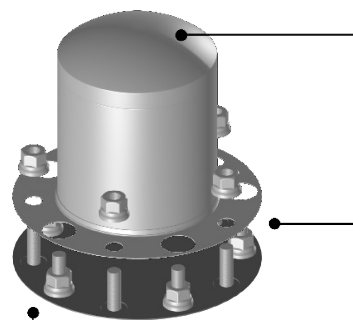
STUD-PILOTED



1.5" LUG NUTS - Most stud-piloted wheels use a 1.5" lug nut, with a conical face that helps center the wheel as it is tightened. Products designed to attach using these lug nuts feature a tapered opening to accommodate the conical face of the lug nut, as shown below.

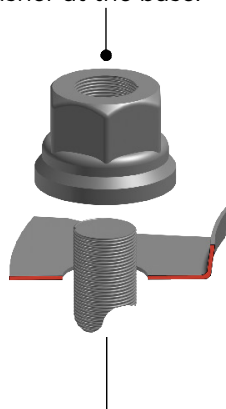


HUB-PILOTED



REMOVABLE CAPS - Many of our rear wheel products feature a removable cap, allowing easy access to the hub for maintenance.

LUG HOLES - There are usually 10 lug holes located around the perimeter of the beauty ring. For hub-piloted applications, there are five 1" flat holes and five 1.88" flat holes that slip over the existing lug nuts. As with all our wheel products, it is only necessary to remove five of the lug nuts for proper installation.



INSTALLATION INSTRUCTIONS

Class 7 and 8 truck wheels attach to the axle and hub in one of two ways: hub-piloted or stud-piloted, as the previous drawing shows. Aluminum wheels are typically hub-piloted, and steel wheels are typically stud-piloted. When determining which product to select for your application, it is important to correctly identify the type of wheel and the method of installation for your wheels for a secure and accurate fit. Products that attach using the lug nuts to secure the product to the wheel, such as beauty rings, hub covers and wheel simulators, specify which application they are intended for. This does not apply, however, to Alliance's line of ABS axle covers, which are universal and can mount to any style wheel. To maximize the life and look of your new alliance wheel and hub covers, it is important not to over-torque the lug nuts during installation. Over-torquing can result in premature failure of the product or the development of cracks around the lug holes due to compression and metal fatigue.

WHEEL COVERS

5



FEATURES & BENEFITS

- Available in chrome and stainless steel
- Includes SuperPremium® chrome finish
- Engineered to fit most popular wheel styles
- Assembled in a wide selection of common sets
- Sold per axle set

SPECIFICATIONS

STUD-PILOTED FRONT WHEEL COVER KITS						
ALLIANCE P/N	FITS WHEEL SIZE	LUG HOLES	NUMBER OF HAND HOLES	LUG NUT COVER SIZE	HUB CAP STYLE	APPLICATION
ABP 87001	22.5"	(5) 1.25" & (5) 1.75"	2	1.5"	4-Notch, Conical	Stud-Piloted
ABP 22594	22.5"	(5) 1.25" & (5) 1.75"	2	1.5"	4-Notch, Baby Moon	Stud-Piloted
ABP 87021	22.5"	(5) 1.25" & (5) 1.75"	2	1.5"	5-Notch, Baby Moon	Stud-Piloted
ABP 87031	22.5"	(5) 1.25" & (5) 1.75"	2	1.5"	6-Notch, Baby Moon	Stud-Piloted
ABP 87041	22.5"	(5) 1.25" & (5) 1.75"	2	1.5"	6-Notch, Uneven Cut, Baby Moon	Stud-Piloted
ABP 87051	22.5"	(5) 1.25" & (5) 1.75"	5	1.5"	4-Notch, Conical	Stud-Piloted
ABP 87061	22.5"	(5) 1.25" & (5) 1.75"	5	1.5"	4-Notch, Baby Moon	Stud-Piloted
ABP 87071	22.5"	(5) 1.25" & (5) 1.75"	5	1.5"	5-Notch, Baby Moon	Stud-Piloted
ABP 87081	22.5"	(5) 1.25" & (5) 1.75"	5	1.5"	6-Notch, Baby Moon	Stud-Piloted
ABP 87091	22.5"	(5) 1.25" & (5) 1.75"	5	1.5"	6-Notch, Uneven Cut, Baby Moon	Stud-Piloted



5 HAND HOLES



2 HAND HOLES

SPECIFICATIONS

HUB-PILOTED FRONT WHEEL COVER KITS						
ALLIANCE P/N	FITS WHEEL SIZE	LUG HOLES	NUMBER OF HAND HOLES	LUG NUT COVER SIZE	HUB CAP STYLE	APPLICATION
ABP 11091	22.5"	(5) 1" & (5) 1.88"	2	33 mm	4-Notch, Conical	Hub-Piloted
ABP 22894	22.5"	(5) 1" & (5) 1.88"	2	33 mm	4-Notch, Baby Moon	Hub-Piloted
ABP 11111	22.5"	(5) 1" & (5) 1.88"	2	33 mm	5-Notch, Baby Moon	Hub-Piloted
ABP 11121	22.5"	(5) 1" & (5) 1.88"	2	33 mm	6-Notch, Baby Moon	Hub-Piloted
ABP 11131	22.5"	(5) 1" & (5) 1.88"	2	33 mm	6-Notch, Uneven Cut, Baby Moon	Hub-Piloted
ABP 11191	22.5"	(5) 1" & (5) 1.88"	5	33 mm	4-Notch, Conical	Hub-Piloted
ABP 11201	22.5"	(5) 1" & (5) 1.88"	5	33 mm	4-Notch, Baby Moon	Hub-Piloted
ABP 11211	22.5"	(5) 1" & (5) 1.88"	5	33 mm	5-Notch, Baby Moon	Hub-Piloted
ABP 11221	22.5"	(5) 1" & (5) 1.88"	5	33 mm	6-Notch, Baby Moon	Hub-Piloted
ABP 11231	22.5"	(5) 1" & (5) 1.88"	5	33 mm	6-Notch, Uneven Cut, Baby Moon	Hub-Piloted



5 HAND HOLES



2 HAND HOLES

FEATURES & BENEFITS

- Available in chrome and stainless steel
- Includes SuperPremium® chrome finish
- Engineered to fit most popular wheel styles
- Assembled in a wide selection of common sets

SPECIFICATIONS



ABP 80021
ABP 80071
ABP 80081



ABP 80031
ABP 80041



ABP 80051
ABP 80061



ABP 21210
ABP 21211
ABP 21310



ABP 11020
ABP 11021
ABP 11050



ABP 21200
ABP 22593

STUD-PILOTED FRONT WHEEL COVERS

ALLIANCE P/N	FITS WHEEL SIZE	HAND/VENT HOLES	MATERIAL	APPLICATION
ABP 80021	20"	10	SS	Stud-Piloted
ABP 80031	22.5"	2	CH	Stud-Piloted
ABP 80041	22.5"	2	SS	Stud-Piloted
ABP 80051	22.5"	5	CH	Stud-Piloted
ABP 80061	22.5"	5	SS	Stud-Piloted
ABP 80071	22.5"	10	CH	Stud-Piloted
ABP 80081	22.5"	10	SS	Stud-Piloted
ABP 80121	24.5"	5	SS	Stud-Piloted
ABP 80131	24.5"	10	CH	Stud-Piloted

HUB-PILOTED FRONT WHEEL COVERS

ALLIANCE P/N	FITS WHEEL SIZE	HAND/VENT HOLES	MATERIAL	APPLICATION
ABP 21210	22.5"	2	CH	Hub-Piloted
ABP 21211	22.5"	2	SS	Hub-Piloted
ABP 11020	22.5"	5	CH	Hub-Piloted
ABP 11021	22.5"	5	SS	Hub-Piloted
ABP 21200	22.5"	10	CH	Hub-Piloted
ABP 22593	22.5"	10	SS	Hub-Piloted
ABP 21310	24.5"	2	CH	Hub-Piloted
ABP 11050	24.5"	5	CH	Hub-Piloted
ABP 21300	24.5"	10	CH	Hub-Piloted
ABP 24593	24.5"	10	SS	Hub-Piloted

INSTALLATION INSTRUCTIONS

To maximize the life and look of your new Alliance wheel and hub covers, it is important not to over-torque the lug nuts during installation. Over-torquing can result in premature failure of the product or the development of cracks around the lug holes due to compression and metal fatigue.

IMPORTANT - Remember to verify whether you have hub-piloted or stud-piloted wheels before placing your order. This is the most common error when ordering front wheel products.

NOTES

[illegible]

SIMULATORS

6



FEATURES & BENEFITS

- Simulators are paired with the most popular styles of premium hub caps, hub covers and nut covers in easy-to-order, easy-to-install sets
- Sold in sets of two
- Set includes two front wheel simulators and two rear wheel simulators

SPECIFICATIONS



2 HAND HOLES



5 HAND HOLES



2 HAND HOLES



5 HAND HOLES

STUD-PILOTED FRONT WHEEL SIMULATORS

ALLIANCE P/N	FITS WHEEL SIZE	BOLT CIRCLE	LUG HOLES	HAND HOLES	APPLICATION
ABP 22790	22.5" x 7.5"	11.25"	10	2	Stud-Piloted
ABP 22795	22.5" x 7.5"	11.25"	10	5	Stud-Piloted
ABP 22598	22.5" x 8.25"	11.25"	10	2	Stud-Piloted
ABP 22558	22.5" x 8.25"	11.25"	10	5	Stud-Piloted
ABP 24598	24.5" x 8.25"	11.25"	10	2	Stud-Piloted
ABP 24558	24.5" x 8.25"	11.25"	10	5	Stud-Piloted

HUB-PILOTED FRONT WHEEL SIMULATORS

ALLIANCE P/N	FITS WHEEL SIZE	BOLT CIRCLE	LUG HOLES	HAND HOLES	APPLICATION
ABP 84003	22.5" x 7.5"	11.25"	10	2	Hub-Piloted
ABP 84013	22.5" x 7.5"	11.25"	10	5	Hub-Piloted
ABP 84033	22.5" x 8.25"	11.25"	10	2	Hub-Piloted
ABP 84043	22.5" x 8.25"	11.25"	10	5	Hub-Piloted
ABP 84063	24.5" x 8.25"	11.25"	10	2	Hub-Piloted
ABP 84073	24.5" x 8.25"	11.25"	10	5	Hub-Piloted

SPECIFICATIONS

HUB-PILOTED REAR WHEEL SIMULATORS					
ALLIANCE P/N	FITS WHEEL SIZE	BOLT CIRCLE	LUG HOLES	HAND HOLES	APPLICATION
ABP 22794	22.5" x 7.5"	11.25"	10	5	Hub-Piloted
ABP 85033	22.5" x 8.25"	11.25"	10	2	Hub-Piloted
ABP 85043	22.5" x 8.25"	11.25"	10	5	Hub-Piloted
ABP 24597	24.5" x 8.25"	11.25"	10	2	Hub-Piloted
ABP 24557	24.5" x 8.25"	11.25"	10	5	Hub-Piloted
ABP 22706	22.5" x 7.5"	11.25"	10	2	Hub-Piloted w/ Small Vent Cut *

*See page 66 for additional details



ABP 85033
ABP 24597



ABP 22794
ABP 85043
ABP 24557

FEATURES & BENEFITS

- Light-duty simulator sets fit many popular Class 5 and 6 vehicles
- Features heavy-gauge stainless steel, polished to a mirror finish, to closely simulate expensive custom chrome-plated wheels
- Available in a variety of wheel sizes, from 16” to 24.5”
- Sold in sets of two
- Set includes two front wheel simulators and two rear wheel simulators

SPECIFICATIONS



ABP 16210

16” LIGHT-DUTY WHEEL SIMULATOR SETS				
ALLIANCE P/N	FITS WHEEL SIZE	LUG HOLES	HAND HOLES	MATERIAL
ABP 16210	16”	8	4	SS
ABP 16201	16”	10	4	SS
ABP 16101	16”	8	4	SS



ABP 16201



ABP 16101

FEATURES & BENEFITS

- Heavy-gauge premium stainless steel
- Stud-piloted

SPECIFICATIONS



2 HAND HOLES



5 HAND HOLES

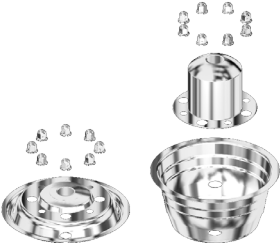
STUD-PILOTED REAR WHEEL SIMULATORS					
ALLIANCE P/N	FITS WHEEL SIZE	BOLT CIRCLE	LUG HOLES	HAND HOLES	APPLICATION
ABP 85001	22.5" x 7.5"	11.25"	10	2	Stud-Piloted
ABP 85011	22.5" x 7.5"	11.25"	10	5	Stud-Piloted
ABP 85031	22.5" x 8.25"	11.25"	10	2	Stud-Piloted
ABP 22557	22.5" x 8.25"	11.25"	10	5	Stud-Piloted
ABP 85061	24.5" x 8.25"	11.25"	10	2	Stud-Piloted
ABP 85071	24.5" x 8.25"	11.25"	10	5	Stud-Piloted

SPECIFICATIONS

19.5" LIGHT-DUTY WHEEL SIMULATOR SETS							
ALLIANCE P/N	FITS WHEEL SIZE	BOLT CIRCLE	NUT COVERS	LUG HOLES	HAND HOLES	MOUNTING	MATERIAL
ABP 11751	19.5"	275 mm	30 mm	8	4	Over-The-Lug	SS
ABP 19531	19.5"	275 mm	32 mm	8	4	Over-The-Lug	SS
ABP 11755	19.5"	275 mm	33 mm	8	4	Over-The-Lug	SS
ABP 19541	19.5"	275 mm	30 mm	8	4	Under-The-Lug	SS
ABP 11775	19.5"	275 mm	33 mm	8	4	Under-The-Lug	SS



Over-The-Lug

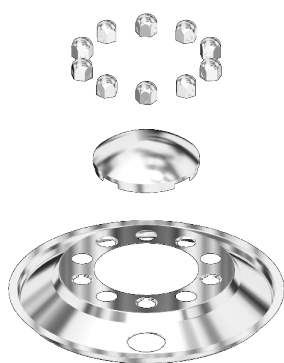


Under-The-Lug

FEATURES & BENEFITS

- Light-duty simulator kits fit many popular Class 5 and 6 vehicles
- Features heavy-gauge stainless steel, polished to a mirror finish, to closely simulate expensive custom chrome-plated wheels
- Available in a variety of wheel sizes, from 16" to 24.5"
- Sold per axle set

SPECIFICATIONS



STUD-PILOTED FRONT WHEEL SIMULATOR KITS					
ALLIANCE P/N	FITS WHEEL SIZE	BOLT CIRCLE	LUG HOLES	HAND HOLES	NUT COVERS
ABP 12901	22.5" x 7.5"	11.25"	10	2	1.5"
ABP 22997	22.5" x 7.5"	11.25"	10	5	1.5"
ABP 22890	22.5" x 8.25"	11.25"	10	2	1.5"
ABP 22891	22.5" x 8.25"	11.25"	10	5	1.5"
ABP 24690	24.5" x 8.25"	11.25"	10	2	1.5"
ABP 24691	24.5" x 8.25"	11.25"	10	5	1.5"



HUB-PILOTED FRONT WHEEL SIMULATOR KITS					
ALLIANCE P/N	FITS WHEEL SIZE	BOLT CIRCLE	LUG HOLES	HAND HOLES	NUT COVERS
ABP 22791	22.5" x 7.5"	11.25"	10	2	33 mm
ABP 22991	22.5" x 7.5"	11.25"	10	5	33 mm
ABP 22590	22.5" x 8.25"	11.25"	10	2	33 mm
ABP 22591	22.5" x 8.25"	11.25"	10	5	33 mm
ABP 24590	24.5" x 8.25"	11.25"	10	2	33 mm
ABP 24591	24.5" x 8.25"	11.25"	10	5	33 mm

FEATURES & BENEFITS

- Light-duty simulator kits fit many popular Class 5 and 6 vehicles
- Features heavy-gauge stainless steel, polished to a mirror finish, to closely simulate expensive custom chrome-plated wheels
- Available in a variety of wheel sizes, from 16" to 24.5"
- Sold per axle set

SPECIFICATIONS

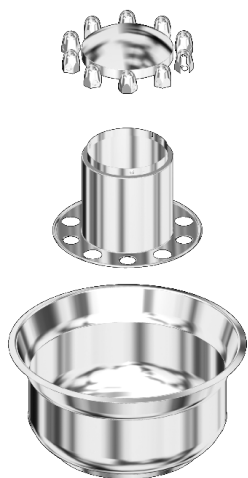


STUD-PILOTED REAR WHEEL SIMULATOR KITS WITH NON-REMOVABLE CAPS					
ALLIANCE P/N	FITS WHEEL SIZE	BOLT CIRCLE	LUG HOLES	HAND HOLES	NUT COVERS
ABP 22907	22.5" x 7.5"	11.25"	10	2	1.5"
ABP 22796	22.5" x 7.5"	11.25"	10	5	1.5"
ABP 22596	22.5" x 8.25"	11.25"	10	2	1.5"
ABP 22556	22.5" x 8.25"	11.25"	10	5	1.5"
ABP 24596	24.5" x 8.25"	11.25"	10	2	1.5"
ABP 24556	24.5" x 8.25"	11.25"	10	5	1.5"



HUB-PILOTED REAR WHEEL SIMULATOR KITS WITH NON-REMOVABLE CAPS					
ALLIANCE P/N	FITS WHEEL SIZE	BOLT CIRCLE	LUG HOLES	HAND HOLES	NUT COVERS
ABP 22896	22.5" x 7.5"	11.25"	10	2	33 mm
ABP 22996	22.5" x 7.5"	11.25"	10	5	33 mm
ABP 22597	22.5" x 8.25"	11.25"	10	2	33 mm
ABP 22856	22.5" x 8.25"	11.25"	10	5	33 mm
ABP 24696	24.5" x 8.25"	11.25"	10	2	33 mm
ABP 24656	24.5" x 8.25"	11.25"	10	5	33 mm

SPECIFICATIONS



STUD-PILOTED REAR WHEEL SIMULATOR KITS WITH REMOVABLE CAPS					
ALLIANCE P/N	FITS WHEEL SIZE	BOLT CIRCLE	LUG HOLES	HAND HOLES	NUT COVERS
ABP 22707	22.5" x 7.5"	11.25"	10	2	1.5"
ABP 13143	22.5" x 7.5"	11.25"	10	5	1.5"
ABP 22506	22.5" x 8.25"	11.25"	10	2	1.5"
ABP 22550	22.5" x 8.25"	11.25"	10	5	1.5"
ABP 24506	24.5" x 8.25"	11.25"	10	2	1.5"
ABP 24550	24.5" x 8.25"	11.25"	10	5	1.5"



HUB-PILOTED REAR WHEEL SIMULATOR KITS WITH REMOVABLE CAPS					
ALLIANCE P/N	FITS WHEEL SIZE	BOLT CIRCLE	LUG HOLES	HAND HOLES	NUT COVERS
ABP 13131	22.5" x 7.5"	11.25"	10	2	33 mm
ABP 13141	22.5" x 7.5"	11.25"	10	5	33 mm
ABP 22806	22.5" x 8.25"	11.25"	10	2	33 mm
ABP 22850	22.5" x 8.25"	11.25"	10	5	33 mm
ABP 24606	24.5" x 8.25"	11.25"	10	2	33 mm
ABP 24650	24.5" x 8.25"	11.25"	10	5	33 mm

PRODUCT FEATURES

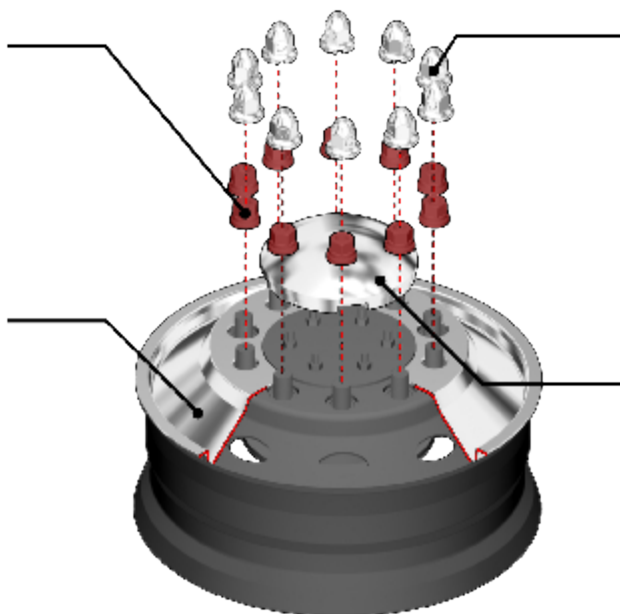
LUG NUTS - Lug nuts come in a variety of sizes and types, which affects the way accessory products attach to the wheel. The most common sizes are 33 mm (for hub-piloted wheels) and 1.5" (for stud-piloted wheels). Our simulators and simulator sets typically require the removal of only half of the lug nuts, with the others remaining in place to secure the wheel.

FRONT WHEEL SIMULATOR - Wheel simulators are available individually or as part of a complete simulator set, which includes the simulator, nut covers and axle covers. All simulators and simulator sets can be ordered as hub-piloted or stud-piloted, which affects how the product is secured to the wheel. It is important to properly identify your wheel type when ordering these products to ensure an accurate and secure fit.

LUG NUTS - Lug nuts come in a variety of sizes and types, which affects the way accessory products attach to the wheel. The most common sizes are 33 mm (for hub-piloted wheels) and 1.5" (for stud-piloted wheels). Our simulators and simulator sets typically require the removal of only half of the lug nuts, with the others remaining in place to secure the wheel.

REAR WHEEL SIMULATOR - Wheel simulators are available individually, or as part of a complete simulator set, which include the simulator, nut covers and axle covers. All simulators and simulator sets can be ordered as hub-piloted or stud-piloted, which affects how the product is secured to the wheel. It is important to properly identify your wheel type when ordering these products to ensure an accurate and secure fit.

BEAUTY RING - Beauty rings are included with all of our simulator sets and are available individually for a custom configuration. They are available in 1-piece, integrated designs or in the more common 2-piece design. All beauty rings are sold as either hub-piloted or stud-piloted configurations. It is important that the correct item be used to ensure a secure and accurate fit.

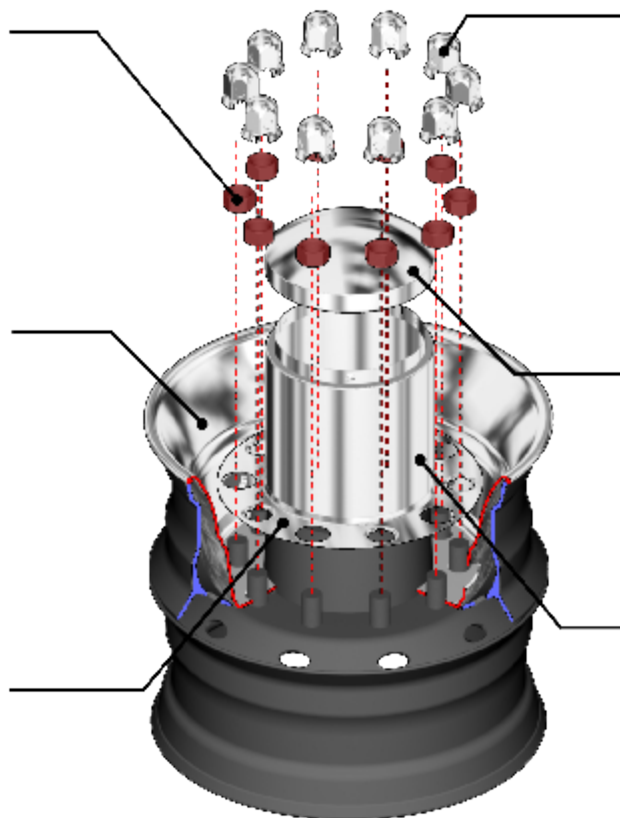


NUT COVERS - Size varies by application. Hub-piloted wheels typically use 33 mm nut covers, and stud-piloted wheels use 1.5" nut covers. All of our wheel simulator kits include 8 or 10 nut covers, depending on the model. Nut covers, in a variety of unique styles, can be ordered separately for a completely custom configuration. Nut covers compatible with simulators and simulator sets are typically available in chrome and 304 stainless.

HUB CAP - Standard baby moon style hub caps are included with all of our simulator sets. A variety of other styles and types, compatible with our simulators and simulator sets, are available individually for a completely custom look.

NUT COVERS - Size varies by application. Hub-piloted wheels typically use 33 mm nut covers, and stud-piloted wheels use 1.5" nut covers. All of our wheel simulator kits include 8 or 10 nut covers, depending on the model. Nut covers, in a variety of unique styles, can be ordered separately for a completely custom configuration. Nut covers compatible with simulators and simulator sets are typically available in chrome and 304 stainless.

HUB CAP - When ordering simulators or simulator sets, you can specify either a 1-piece or 2-piece design. The 1-piece designs have an integrated hub cap, which is non-removable. The 2-piece designs feature a removable cap, which allows access to the hub components while the simulator remains installed.



AXLE COVER - Axle covers are included as part of the complete simulator kit or can be purchased separately for a custom configuration. All axle covers come as either hub-piloted or stud-piloted, and must be ordered correctly for a proper fit.

PRODUCT FEATURES

LARGE VENT CUT

Some simulator models are available with the large vent cut, which allows access to the valve stem with the simulator installed. The vent cut is a notch cut from one of the hand holes located around the perimeter of the simulator.



SMALL VENT CUT

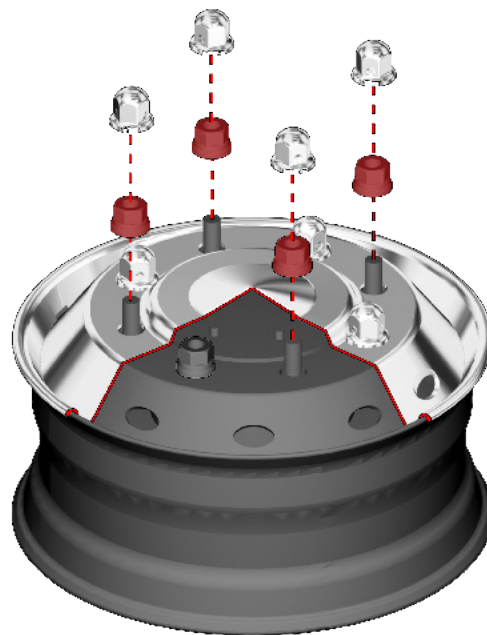
Some simulators feature a small vent cut, which allows access to the valve stem assembly with the simulator installed. The vent cut is a notch cut from one of the hand holes located around the perimeter of the simulator.



INSTALLATION INSTRUCTIONS

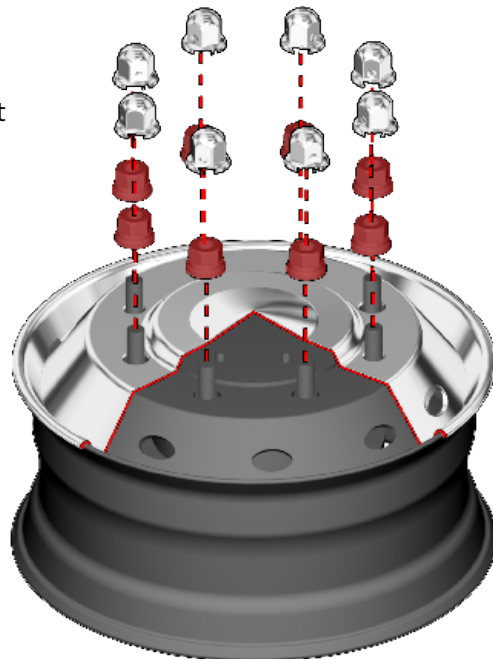
OVER-THE-LUG

These products are designed to be installed by removing only some of the lug nuts, leaving the wheel securely attached during installation. Typically only 4 or 5 lug nuts need to be removed, with integrated lug nut covers slipping over the existing lug nuts.



UNDER-THE-LUG

Products labeled as “under-the-lug” require the removal of all 8 or 10 lug nuts for installation. This provides the most secure means of attaching the wheel simulator, but does require additional effort.



To maximize the life and look of your new Alliance wheel and hub covers, it is important not to over-torque the lug nuts during installation. Over-torquing can result in premature failure of the product or the development of cracks around the lug holes due to compression and metal fatigue.

MUD FLAP ACCESSORIES

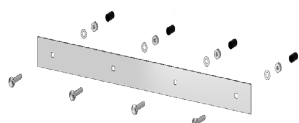
7



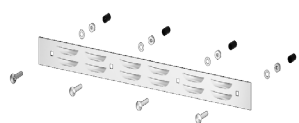
FEATURES & BENEFITS

- Stainless steel or SuperPremium® chrome weights
- Forged from a massive slab of high-grade stainless steel to resist rust and corrosion
- Built to last

SPECIFICATIONS



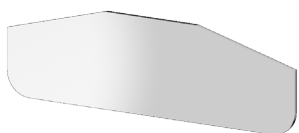
2" X 24" TOP WEIGHTS					
ALLIANCE P/N	WIDTH	HEIGHT	MOUNTING STYLE	MATERIAL	PACKAGING
ABP 36100	24"	2"	Hardware	CH	Each
ABP 36101	24"	2"	Hardware	SS	Each
ABP 36103	24"	2"	Hardware	CH	Display Pack, Pair
ABP 36104	24"	2"	Hardware	SS	Display Pack, Pair



2" X 24" TOP WEIGHTS WITH LOUVERS					
ALLIANCE P/N	WIDTH	HEIGHT	MOUNTING STYLE	MATERIAL	PACKAGING
ABP 14404	24"	2"	Hardware	CH	Each
ABP 14405	24"	2"	Hardware	SS	Each
ABP 14406	24"	2"	Hardware	CH	Display Pack, Pair
ABP 14407	24"	2"	Hardware	SS	Display Pack, Pair



2" X 24" TOP WEIGHTS					
ALLIANCE P/N	WIDTH	HEIGHT	MOUNTING STYLE	MATERIAL	PACKAGING
ABP 36200	24"	2"	Stud	CH	Each
ABP 36201	24"	2"	Stud	SS	Each
ABP 36203	24"	2"	Stud	CH	Display Pack, Pair
ABP 36204	24"	2"	Stud	SS	Display Pack, Pair



3" X 10" BOTTOM WEIGHTS					
ALLIANCE P/N	WIDTH	HEIGHT	MOUNTING STYLE	MATERIAL	PACKAGING
ABP 31700	10"	3"	Stud	CH	Each



3" X 12" BOTTOM WEIGHTS					
ALLIANCE P/N	WIDTH	HEIGHT	MOUNTING STYLE	MATERIAL	PACKAGING
ABP 31120	12"	3"	Stud	CH	Each

CH - Chrome | SS - Stainless Steel

MUD FLAP ACCESSORIES

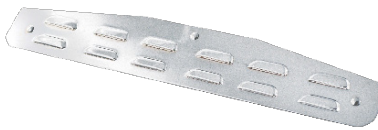
SPECIFICATIONS



4" X 24" BOTTOM WEIGHTS - STUD MOUNT					
ALLIANCE P/N	WIDTH	HEIGHT	MOUNTING STYLE	MATERIAL	PACKAGING
ABP 31600	24"	4"	Stud	CH	Each
ABP 31601	24"	4"	Stud	SS	Each
ABP 31603	24"	4"	Stud	CH	Display Pack, Pair
ABP 31604	24"	4"	Stud	SS	Display Pack, Pair



4" X 24" BOTTOM WEIGHTS - HARDWARE MOUNT					
ALLIANCE P/N	WIDTH	HEIGHT	MOUNTING STYLE	MATERIAL	PACKAGING
ABP 31100	24"	4"	Hardware	CH	Each
ABP 31101	24"	4"	Hardware	SS	Each
ABP 31103	24"	4"	Hardware	CH	Display Pack, Pair
ABP 31104	24"	4"	Hardware	SS	Display Pack, Pair



4" X 24" BOTTOM WEIGHTS - HARDWARE MOUNT WITH LOUVERS					
ALLIANCE P/N	WIDTH	HEIGHT	MOUNTING STYLE	MATERIAL	PACKAGING
ABP 14530	24"	4"	Hardware	CH	Each
ABP 14531	24"	4"	Hardware	SS	Each
ABP 14532	24"	4"	Hardware	CH	Display Pack, Pair
ABP 14533	24"	4"	Hardware	SS	Display Pack, Pair



4" X 24" BOTTOM WEIGHTS - STUD MOUNT FREIGHTLINER CUT-OUT					
ALLIANCE P/N	WIDTH	HEIGHT	MOUNTING STYLE	MATERIAL	PACKAGING
ABP 31610	24"	4"	Stud	CH	Each
ABP 14551	24"	4"	Stud	SS	Each
ABP 14552	24"	4"	Stud	CH	Display Pack, Pair
ABP 14553	24"	4"	Stud	SS	Display Pack, Pair

CH - Chrome | SS - Stainless Steel

7

BOTTOM WEIGHTS

SPECIFICATIONS

7

BOTTOM WEIGHTS



3" X 14" BOTTOM WEIGHTS					
ALLIANCE P/N	WIDTH	HEIGHT	MOUNTING STYLE	MATERIAL	PACKAGING
ABP 31200	14"	3"	Stud	CH	Each



3" X 16" BOTTOM WEIGHTS					
ALLIANCE P/N	WIDTH	HEIGHT	MOUNTING STYLE	MATERIAL	PACKAGING
ABP 31300	16"	3"	Stud	CH	Each



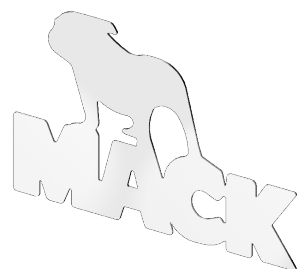
3" X 18" BOTTOM WEIGHTS					
ALLIANCE P/N	WIDTH	HEIGHT	MOUNTING STYLE	MATERIAL	PACKAGING
ABP 31400	18"	3"	Stud	CH	Each
ABP 31401	18"	3"	Stud	SS	Each
ABP 14482	18"	3"	Stud	CH	Display Pack, Pair
ABP 14483	18"	3"	Stud	SS	Display Pack, Pair



4" X 24" BOTTOM WEIGHTS - STUD MOUNT INTERNATIONAL CUTOUT					
ALLIANCE P/N	WIDTH	HEIGHT	MOUNTING STYLE	MATERIAL	PACKAGING
ABP 31620	24"	4"	Stud	CH	Each
ABP 31623	24"	4"	Stud	CH	Display Pack, Pair



4" X 24" BOTTOM WEIGHTS - STUD MOUNT MACK SCRIPT-STYLE CUTOUT					
ALLIANCE P/N	WIDTH	HEIGHT	MOUNTING STYLE	MATERIAL	PACKAGING
ABP 31640	24"	4"	Stud	CH	Each
ABP 31643	24"	4"	Stud	CH	Display Pack, Pair



11" X 16" BOTTOM WEIGHTS - STUD MOUNT LARGE MACK LOGO					
ALLIANCE P/N	WIDTH	HEIGHT	MOUNTING STYLE	MATERIAL	PACKAGING
ABP 33110	16"	11"	Stud	CH	Each

SPECIFICATIONS



4" X 24" BOTTOM WEIGHTS - STUD MOUNT STERLING CUTOUT					
ALLIANCE P/N	WIDTH	HEIGHT	MOUNTING STYLE	MATERIAL	PACKAGING
ABP 31800	24"	4"	Stud	CH	Each
ABP 14601	24"	4"	Stud	SS	Each
ABP 31803	24"	4"	Stud	CH	Display Pack, Pair
ABP 14603	24"	4"	Stud	SS	Display Pack, Pair



4" X 24" BOTTOM WEIGHTS - STUD MOUNT VOLVO CUTOUT					
ALLIANCE P/N	WIDTH	HEIGHT	MOUNTING STYLE	MATERIAL	PACKAGING
ABP 31510	24"	4"	Stud	CH	Each

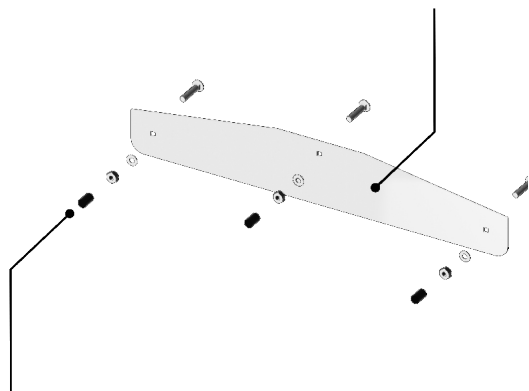


4" X 24" BOTTOM WEIGHTS - STUD MOUNT WESTERN STAR CUTOUT					
ALLIANCE P/N	WIDTH	HEIGHT	MOUNTING STYLE	MATERIAL	PACKAGING
ABP 31680	24"	4"	Stud	CH	Each
ABP 14622	24"	4"	Stud	CH	Display Pack, Pair

INSTALLATION INSTRUCTIONS

HARDWARE MOUNT

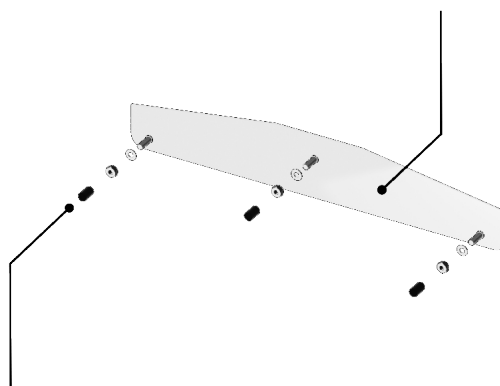
Using stainless steel, the hardware-mount-style mud flap weights are the best option for secure mounting and less chance of breakage.



HARDWARE MOUNT - Hardware-mounted mud flap weights feature several square holes, with carriage bolts going through the weight and the mud flap. The provided washers and nuts are used to complete the assembly. This is a very secure way to mount hardware to a mud flap and is less prone to breakage due to road debris and hazards.

STUD MOUNT

The stud-mount-style mud flap weights are designed to be less likely to attract dirt and debris.

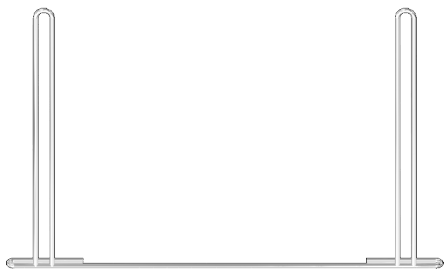


STUD MOUNT - Stud-mounted mud flap weights feature three welded studs with threads, located on the rear of the unit. The studs go through the mud flap and are secured using the provided washers and nuts. This mounting style provides the cleanest look.

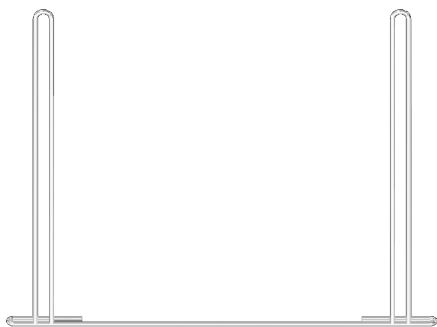
FEATURES & BENEFITS

- Available in chrome and stainless steel
- Compatible with most mud flap hangers and light bars

SPECIFICATIONS



17" X 24" ANTI-SAIL BRACKET		
ALLIANCE P/N	SIZE	MATERIAL
ABP 55220	17" x 24"	CH



21" X 24" ANTI-SAIL BRACKET		
ALLIANCE P/N	SIZE	MATERIAL
ABP 55210	21" x 24"	CH
ABP 55211	21" x 24"	SS



45° ANTI-SAIL BRACKET - FITS ALL 45° MUD FLAP HANGERS	
ALLIANCE P/N	MATERIAL
ABP 55214	CH

NOTES

[illegible]

LICENSE PLATE ACCESSORIES

8



FEATURES & BENEFITS

- Available in heavy-duty chrome-plated cast zinc with a SuperPremium® chrome finish and solid stainless steel with a mirror chrome finish
- License plate holder replacements available with and without lights
- Available in a variety of sizes to meet every need

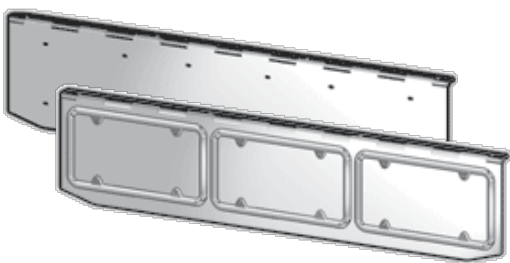
SPECIFICATIONS



8" X 14" DELUXE 304 STAINLESS HINGED LICENSE PLATE HOLDERS	
ALLIANCE P/N	DESCRIPTION
ABP 81612	8" x 14" deluxe license plate holder for one (1) license plate. Fully hinged. Without license frame.
ABP 20103	8" x 14" Deluxe license plate holder for one (1) license plate. Fully hinged. Includes one (1) license frame.

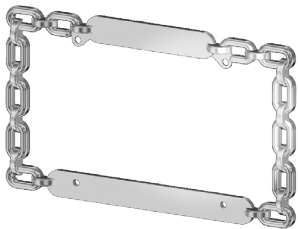


8" X 26" DELUXE 304 STAINLESS HINGED LICENSE PLATE HOLDERS	
ALLIANCE P/N	DESCRIPTION
ABP 81624	8" x 26" deluxe license plate holder for two (2) license plates. Fully hinged. Without license frames.
ABP 20113	8" x 26" deluxe license plate holder for two (2) license plates. Fully hinged. Includes two (2) license frames.

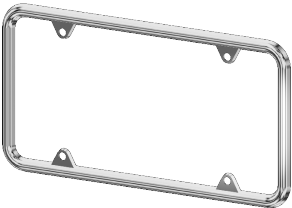


8" X 39" DELUXE 304 STAINLESS HINGED LICENSE PLATE HOLDERS	
ALLIANCE P/N	DESCRIPTION
ABP 81636	8" x 39" deluxe license plate holder for three (3) license plates. Fully hinged. Without license frames.
ABP 20123	8" x 39" deluxe license plate holder for three (3) license plates. Fully hinged. Includes three (3) license frames.

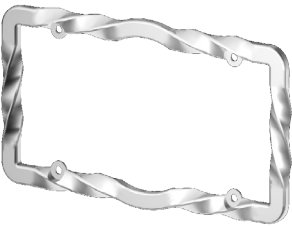
SPECIFICATIONS



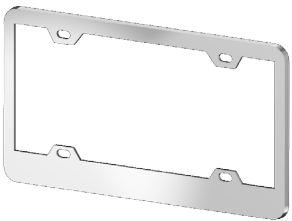
CHAIN-STYLE LICENSE FRAME	
ALLIANCE P/N	MATERIAL
ABP 58330	Chrome-plated Cast Zinc



NARROW-STYLE LICENSE FRAME	
ALLIANCE P/N	MATERIAL
ABP 58310	Chrome-plated Cast Zinc

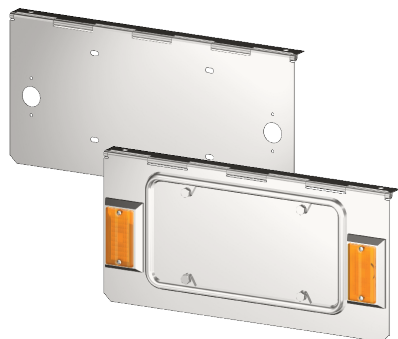


TWISTED-STYLE LICENSE FRAME	
ALLIANCE P/N	MATERIAL
ABP 58340	Chrome-plated Cast Zinc

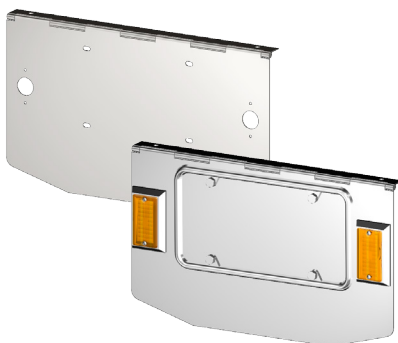


FAT-BOTTOM-STYLE LICENSE FRAME	
ALLIANCE P/N	MATERIAL
ABP 58350	Chrome-plated Cast Zinc

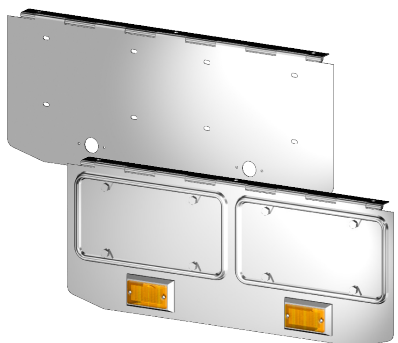
SPECIFICATIONS



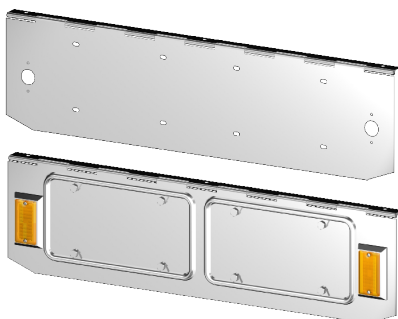
8" X 20" LICENSE PLATE HOLDERS WITH LIGHTS					
ALLIANCE P/N	SIZE	MATERIAL	FRAMES	LIGHTS	DETAILS
ABP 20130	8" x 20"	CH	1	N/A	Fully hinged. Frames & lights not included.
ABP 20132	8" x 20"	CH	1	2	Fully hinged. Frames & lights included.
ABP 20131	8" x 20"	SS	1	N/A	Fully hinged. Frames & lights not included.
ABP 81410	8" x 20"	SS	1	2	Fully hinged. Frames & lights included.



10" X 18" LICENSE PLATE HOLDERS WITH LIGHTS					
ALLIANCE P/N	SIZE	MATERIAL	FRAMES	LIGHTS	DETAILS
ABP 58500	10" x 18"	CH	1	N/A	Fully hinged. Frames & lights not included.
ABP 58510	10" x 18"	CH	1	2	Fully hinged. Frames & lights included.



10" X 27" LICENSE PLATE HOLDERS WITH LIGHTS					
ALLIANCE P/N	SIZE	MATERIAL	FRAMES	LIGHTS	DETAILS
ABP 58600	10" x 27"	CH	2	N/A	Fully hinged. Frames & lights not included.
ABP 58610	10" x 27"	CH	2	2	Fully hinged. Frames & lights included.



8" X 32" LICENSE PLATE HOLDERS WITH LIGHTS					
ALLIANCE P/N	SIZE	MATERIAL	FRAMES	LIGHTS	DETAILS
ABP 20141	8" x 32"	SS	2	N/A	Fully hinged. Frames & lights not included.
ABP 81436	8" x 32"	SS	2	2	Fully hinged. Frames & lights included.

CH - Chrome | SS - Stainless Steel

FEATURES & BENEFITS

- Mounts to the rear frame
- Attaches using supplied hardware

SPECIFICATIONS



ABP FL102A



ABP FL102



DML DUA080A



UNIVERSAL REAR FRAME COVERS	
ALLIANCE P/N	DESCRIPTION
ABP FL102A	Plain
ABP FL102	Freightliner logo
DML DUA080A	Plain

LICENSE PLATE LIGHTS	
ALLIANCE P/N	DESCRIPTION
ABP 69950	Replacement license plate lights

NOTES

[illegible]

DECORATIVE HARDWARE

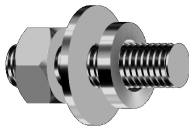
9



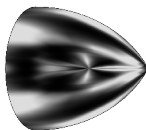
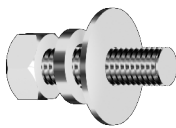
FEATURES & BENEFITS

- Minimizes rusting and corrosion due to salt and moisture
- Manufactured from heavy-gauge steel, with SuperPremium® chrome finish

SPECIFICATIONS



DECORATIVE ACORN NUTS	
ALLIANCE P/N	MATERIAL
ABP 71400	CH



DECORATIVE BULLETS	
ALLIANCE P/N	MATERIAL
ABP 71500	CH

FEATURES & BENEFITS

- Haz-mat (hazardous material) placards are precision-formed from heavy-gauge aluminum plate
- Includes aluminum display plate and 15 interchangeable signs

SPECIFICATIONS



HAZ-MAT PLACARDS	
ALLIANCE P/N	MATERIAL
ABP 22403	Painted Aluminum

NOTES

This image shows a single page of white paper with horizontal blue or grey ruling lines. The lines are evenly spaced and run across the width of the page, leaving small gaps between them. There are no margins, text, or other markings on the page.

BUMPER GUIDES

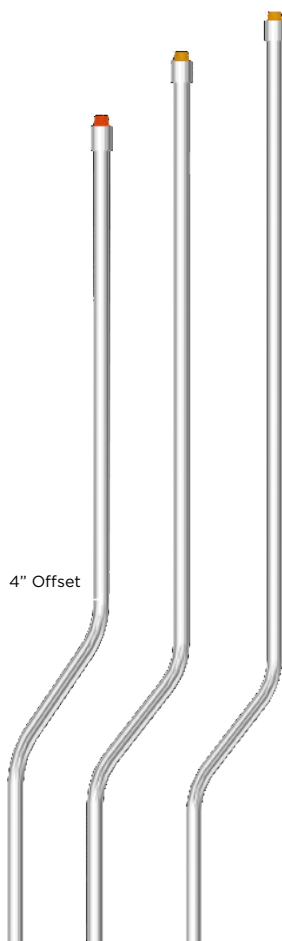
10



FEATURES & BENEFITS

- Manufactured from heavy-gauge chrome and stainless
- Features heavy-duty clamps and hardware
- Available with SuperPremium® chrome or premium stainless finish
- Available with flat or G-clamp
- Available from 38" to 52"

SPECIFICATIONS



4" Offset



Deluxe



Standard

STANDARD BUMPER GUIDES

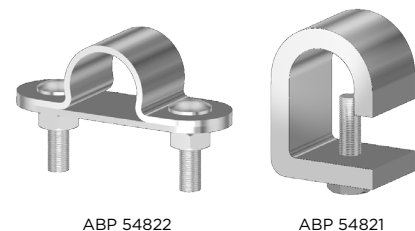
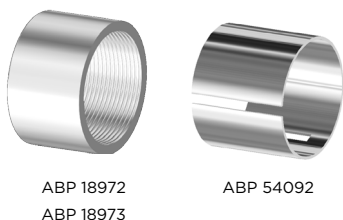
ALLIANCE P/N	SIZE	MATERIAL	LENS	SET OF	CLAMP
ABP 54570	38"	CH	Amber	2	Flat
ABP 54630	38"	SS	Amber	2	Flat
ABP 54600	38"	CH	Amber	2	G
ABP 54670	38"	SS	Amber	2	G
ABP 54540	48"	CH	Amber	2	Flat
ABP 54507	48"	SS	Amber	2	Flat
ABP 54510	48"	CH	Amber	2	G
ABP 54504	48"	SS	Amber	2	G
ABP 54220	52"	CH	Amber	2	Flat
ABP 54107	52"	SS	Amber	2	Flat
ABP 54110	52"	CH	Amber	2	G
ABP 54101	52"	SS	Amber	2	G

DELUXE BUMPER GUIDES

ALLIANCE P/N	SIZE	MATERIAL	LENS	SET OF	CLAMP
ABP 18604	38"	CH	Amber	2	Flat
ABP 18605	38"	SS	Amber	2	Flat
ABP 18654	38"	CH	Amber	2	G
ABP 18655	38"	SS	Amber	2	G
ABP 18704	48"	CH	Amber	2	Flat
ABP 18705	48"	SS	Amber	2	Flat
ABP 18754	48"	CH	Amber	2	G
ABP 18755	48"	SS	Amber	2	G
ABP 18804	52"	CH	Amber	2	Flat
ABP 18805	52"	SS	Amber	2	Flat
ABP 18854	52"	CH	Amber	2	G
ABP 18855	52"	SS	Amber	2	G

CH - Chrome | SS - Stainless Steel

SPECIFICATIONS



STANDARD BUMPER GUIDES

ALLIANCE P/N	LENS	SET OF
ABP 54087	Amber	2
ABP 54089	Red	2
ABP 54088	Blue	2
ABP 54810	12v Replacement Bulb	2

DELUXE REPLACEMENT LENS

ALLIANCE P/N	LENS	SET OF
ABP 18945	Amber	2
ABP 18946	Red	2
ABP 18947	Blue	2
ABP 54810	12v Replacement Bulb	2

REPAIR KIT

ALLIANCE P/N	DESCRIPTION
ABP 54091	Fits all Standard & Deluxe model bumper guides. Includes socket, bulb & wiring harness

THREADED TOP COLLAR

ALLIANCE P/N	MATERIAL	DESCRIPTION
ABP 54093	CH	Fits Standard Bumper Guide
ABP 54094	SS	Fits Standard Bumper Guide
ABP 18972	CH	Fits Deluxe Bumper Guide
ABP 18973	SS	Fits Deluxe Bumper Guide
ABP 54092	N/A	Washer for ABP 54093/ABP 54094

REPLACEMENT CLAMP KITS

ALLIANCE P/N	MATERIAL	CLAMP	DESCRIPTION
ABP 54822	CH	Flat	Fits all models
ABP 54821	SS	G	Fits all models

NOTES

[illegible]

AIR HORNS

11



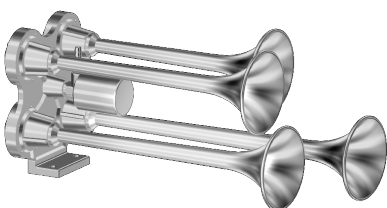
FEATURES & BENEFITS

- 100% solid brass trumpets with cast metal supports and mounts
- In-line solenoid valves
- Available in chrome or stainless steel

SPECIFICATIONS



DUAL-TONE AIR HORN			
ALLIANCE P/N	BELL SIZE	SIZE	MATERIAL
ABP 23451	6"	12"L x 3 3/4"H	CH



QUAD-TONE AIR HORN			
ALLIANCE P/N	BELL SIZE	SIZE	MATERIAL
ABP 23453	3.5"	12"L x 7"H	CH



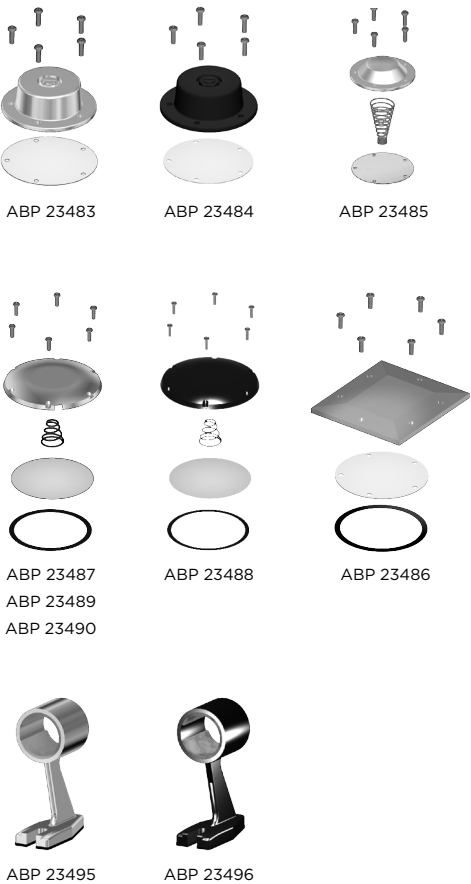
28" SINGLE-TONE RECTANGULAR AIR HORN			
ALLIANCE P/N	BELL SIZE	SIZE	MATERIAL
ABP 23461	8.5" x 4.75"	28"L x 5"H	CH

AIR HORN SUPPORT ARMS	
ALLIANCE P/N	DESCRIPTION
ABP 23495	Replacement cast metal support arm with liner. For ABP air horn models ABP 23461, ABP 23462, ABP 23465. Chrome.
ABP 23496	Replacement cast metal support arm with liner. For ABP air horn model ABP 23463. Black chrome.

FEATURES & BENEFITS

- Due to extreme pressure and constant exposure to the elements, air horns need occasional replacement of their sound-producing diaphragms and seals to stay in good working order
- Restore your horn’s dynamic sound by selecting from the full range of repair kits available
- Kits include diaphragms, seals and hardware to restore your horn

SPECIFICATIONS



AIR HORN REPAIR KITS	
ALLIANCE P/N	DESCRIPTION
ABP 23483	Repair kit for ABP air horn model ABP 23451. Kit contains new diaphragm, backing plate & hardware.
ABP 23484	Repair kit for ABP air horn model ABP 23452. Kit contains new diaphragm, backing plate & hardware.
ABP 23485	Repair kit for ABP air horn model ABP 23453. Kit contains new diaphragm, spring, backing plate & hardware.
ABP 23486	Repair kit for ABP air horn model ABP 23461. Kit contains new diaphragm, gasket, backing plate & hardware.
ABP 23487	Repair kit for ABP air horn model ABP 23462. Kit contains new diaphragm, gasket, spring, backing plate & hardware.
ABP 23488	Repair kit for ABP air horn model ABP 23463. Kit contains new diaphragm, gasket, spring, backing plate & hardware.
ABP 23489	Repair kit for ABP air horn model ABP 23465. Kit contains new diaphragm, gasket, spring, backing plate & hardware.
ABP 23490	Repair kit for ABP air horn model ABP 23460. Kit contains new diaphragm, gasket, spring, backing plate & hardware.

FEATURES & BENEFITS

- Alliance offers a variety of premium horn covers to protect and beautify your truck
- Air horn covers protect your air horn from rain, insects and debris, extending the life and beauty
- Alliance horn covers are available in SuperPremium® chrome or stainless steel

SPECIFICATIONS



RECTANGULAR HADLEY-STYLE HORN COVERS			
ALLIANCE P/N	FITS	MATERIAL	PACKAGING
ABP 52800	4.5" x 8.5" Bell	CH	Each



RECTANGULAR GROVER-STYLE HORN COVERS			
ALLIANCE P/N	FITS	MATERIAL	PACKAGING
ABP 52901	4-5/8" x 7-3/8" Bell	SS	Each

FANS

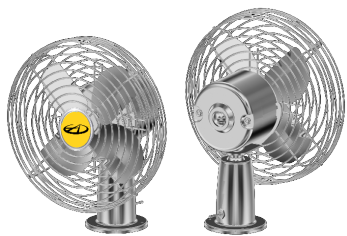
12



FEATURES & BENEFITS

- Available in economy and heavy-duty variations
- Rated from 500 to 5,000 hours MTBF
- Available in 12 and 24 volts

SPECIFICATIONS



12-VOLT CHROME ECONOMY FAN						
ALLIANCE P/N	VOLTS	SPEEDS	HOURS MTBF	MATERIAL	BASE MATERIAL	DESCRIPTION
ABP 72120	12	2	500	CH	Steel	Permanent magnet motor



12-VOLT CHROME OEM-STYLE FAN						
ALLIANCE P/N	VOLTS	SPEEDS	HOURS MTBF	MATERIAL	BASE MATERIAL	DESCRIPTION
ABP 22445	12	2	5000	CH	Cast Steel	Heavy-duty electric motor with copper windings for power, & sealed bearings for long life & quiet operation



24-VOLT CHROME OEM-STYLE FAN						
ALLIANCE P/N	VOLTS	SPEEDS	HOURS MTBF	MATERIAL	BASE MATERIAL	DESCRIPTION
ABP 22450	24	2	5000	CH	Cast Steel	Heavy-duty electric motor with copper windings for power, & sealed bearings for long life & quiet operation

HYDRAULIC BOTTLE JACKS

13



FEATURES & BENEFITS

- Small enough to fit underneath most seats, or comfortably in a toolbox
- Powerful enough to lift the heaviest loads
- Available in regular and low-boy styles
- Hydraulic bottle jacks feature 2-piece handles

SPECIFICATIONS



12-TON HYDRAULIC BOTTLE JACK		
ALLIANCE P/N	SIZE	STYLE
ABP N795 23700	12-Ton	Regular
ABP N795 23705	12-Ton	Low-Boy



20-TON HYDRAULIC BOTTLE JACK		
ALLIANCE P/N	SIZE	STYLE
ABP N795 23710	20-Ton	Regular
ABP N795 23715	20-Ton	Low-Boy



32-TON HYDRAULIC BOTTLE JACK		
ALLIANCE P/N	SIZE	STYLE
ABP N795 23720	32-Ton	Regular
ABP N795 23725	32-Ton	Low-Boy

BOTTLE JACK REPAIR KITS	
ALLIANCE P/N	DESCRIPTION
ABP 23701	12-Ton Repair Kit
ABP 23711	20-Ton Repair Kit
ABP 23721	32-Ton Repair Kit

BOOT BRUSHES

14



FEATURES & BENEFITS

- Keeps boots and trucks clean
- Tough nylon bristles and aluminum casing

SPECIFICATIONS



SOLE MATE		
ALLIANCE P/N	COLOR	DESCRIPTION
ABP 23800	Black	Boot brush 7.5”L x 2”H
ABP 23810	Black	Replacement nylon bristles

ELECTRICAL ACCESSORIES

15



FEATURES & BENEFITS



- Available in incandescent and LED versions
- Mounts to existing holes in the brackets
- Lights, harnesses and bezels included on all models unless specified otherwise
- Fits on both Vortex and Donaldson model cans

SPECIFICATIONS



ABP FL155



ABP FL225



ABP FL254

13" AIR CLEANER LIGHT BARS - FRONT			
ALLIANCE P/N	BEZELS INCLUDED	LIGHTS	LIGHT COLOR
ABP FL154	Yes	X3AG2-INCAN (6)	Amber
ABP FL155	Yes	X3AG2-LED (6)	Amber
ABP FL225	Yes	X3ACG2-LED (6)	Amber Clear
ABP FL258	No	2" Rnd INCAN (7)	Amber
ABP FL254	No	2" Rnd LED Starburst (7)	Amber

FEATURES & BENEFITS



- Available in incandescent and LED versions
- Mounts to air cleaner strap bolts
- Lights, harnesses and bezels included on all models unless specified otherwise
- Fits on both Vortex and Donaldson model cans

SPECIFICATIONS



ABP FL251



ABP FL253



ABP FL250

AIR CLEANER LIGHT BARS - REAR			
ALLIANCE P/N	BEZELS INCLUDED	LIGHTS	LIGHT COLOR
ABP FL251	Yes	X3RG2-INCAN (6)	Red
ABP FL252	Yes	X3RG2-LED (6)	Red
ABP FL253	Yes	X3RCG2-LED (6)	Red Clear
ABP FL249	No	2" Rnd INCAN (6)	Red
ABP FL250	No	2" Rnd LED Starburst (6)	Red
ABP FLO27R	No	2" Rnd Light Holes (6)	N/A

FEATURES & BENEFITS



- Both ends are open on shield
- Attaches using existing hardware
- Sold in pairs

SPECIFICATIONS



BACK-UP LIGHT BRACKET

ALLIANCE P/N

DML DUABULB



BACK-UP LIGHT SHIELD

ALLIANCE P/N

DML DUABULS

FEATURES & BENEFITS



- 2" bezels available in two styles: plain or with visor
- Sold individually
- Bulk wiring harness by the roll

SPECIFICATIONS



DML DUALB2



DML DUAVLB2



DML DUALB4



DML DUAVLB4



DML DUALB6



DML DUAVLB6

ROUND BEZELS

ALLIANCE P/N	SIZE	VISOR INCLUDED
DML DUALB2	2"	No
DML DUAVLB2	2"	Yes
DML DUALB25	2.5"	No
DML DUAVLB25	2.5"	Yes
DML DUALB4	4"	No
DML DUAVLB4	4"	Yes

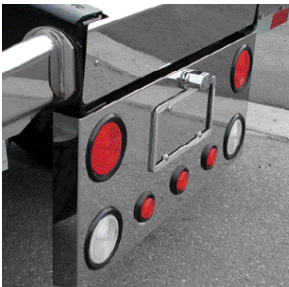
OVAL BEZELS

ALLIANCE P/N	SIZE	VISOR INCLUDED
DML DUALB6	6"	No
DML DUAVLB6	6"	Yes

WIRING HARNESSES

ALLIANCE P/N	CENTER SPACING	PLUG NUMBER
DML DUAL0100	6"	200
DML DUA0112	12"	100

FEATURES & BENEFITS



- Mounts to underside of frame
- Lights included; hardware and some wiring supplied
- Corners are welded and polished
- Has removable back cover
- Measures 34" wide by 15" tall

SPECIFICATIONS



DML DUA077



DML DUA077A

CENTER REAR LIGHT BOX		
ALLIANCE P/N	SIZE	LIGHT SHAPE
DML DUA077	4"	Round
DML DUA077A	6"	Oval

FEATURES & BENEFITS



- All lights come with bezels, unless otherwise specified (the 2" starburst light does not come with a bezel)
- Available in LED and incandescent
- Available in amber, red, clear lens amber light and clear lens red light
- Sold individually

SPECIFICATIONS



DML DUAX2AG2LED



DML DUAX2RG2LED



DML DUAX2ACG2LED



DML DUAX3AG2LED



DML DUAX3ACG2LED



DML DUAX3RG2LED

MARKER LAMPS		
ALLIANCE P/N	NAME	COLOR
DML DUAX2AG2	X2AG2	Amber Incandescent
DML DUAX2RG2	X2RG2	Red Incandescent
DML DUAX2AG2LED	X2AG2-LED	Amber LED
DML DUAX2RG2LED	X2RG2-LED	Red LED
DML DUAX2ACG2LED	X2ACG2-LED	Clear Lens - Amber LED
DML DUAX2RCG2LED	X2RCG2-LED	Clear Lens - Red LED
DML DUAX3AG2	X3AG2	Amber Incandescent
DML DUAX3RG2	X3RG2	Red Incandescent
DML DUAX3AG2LED	X3AG2-LED	Amber LED
DML DUAX3RG2LED	X3RG2-LED	Red LED
DML DUAX3ACG2LED	X3ACG2-LED	Clear Lens - Amber LED
DML DUAX3RCG2LED	X3RCG2-LED	Clear Lens - Red LED

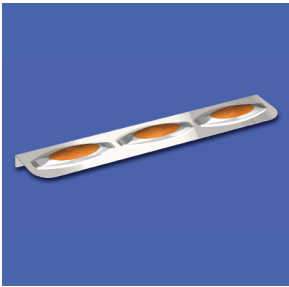
SPECIFICATIONS



DML DUATL3050A

LED STARBURST LIGHTS				
ALLIANCE P/N	NAME	SIZE	NUMBER OF DIODES	COLOR
DML DUATL3050A	X2AG2	2"	10	Amber
DML DUATL3050	X2RG2	2"	10	Red

FEATURES & BENEFITS



- 4" wide with different light configurations
- Designed to hang by the 2" lip, bolts to any desired area
- Hardware, lights and harness are included
- Sold individually

SPECIFICATIONS



OVAL LIGHT BAR		
ALLIANCE P/N	SIZE	LIGHTS
DML DUA066	9 1/4" Long, 4" Wide	Oval 6" Light (1)
DML DUA067X2A	15 1/4" Long, 4" Wide	X2AG2-LED (2)
DML DUA068X2A	22 1/2" Long, 4" Wide	X2AG2-LED (3)

NOTES

[illegible]

MISCELLANEOUS ACCESSORIES

16



FEATURES & BENEFITS



- Battery/toolbox panels for standard toolboxes
- Panels are fastened using supplied hardware and silicone adhesive
- Sold in a 4-piece set

SPECIFICATIONS

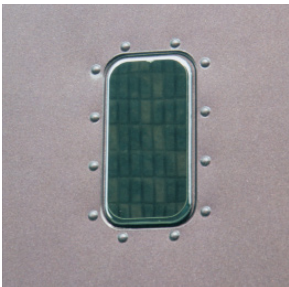


UNIVERSAL BATTERY BOX PANEL

ALLIANCE P/N

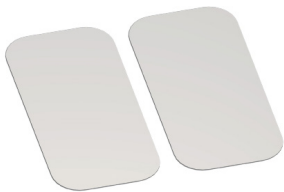
ABP FL030

FEATURES & BENEFITS



- Flat panel adheres to face of bunk vent
- No hardware required
- Attaches using two-sided tape
- Sold in pairs

SPECIFICATIONS



UNIVERSAL BUNK VENT COVER
ALLIANCE P/N
ABP FL031

FEATURES & BENEFITS



- Sold in packages of 10

SPECIFICATIONS

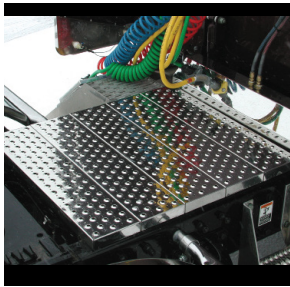


ABP FL106

SPECIFICATIONS

Universal - Box of 10

FEATURES & BENEFITS



- Stainless steel deck plate
- Available in 7" x 32" individual sections
- All hardware included
- Sold individually

SPECIFICATIONS



UNIVERSAL DECK PLATE	
ALLIANCE P/N	SIZE
DML DUA088	7" x 32" Sections

FEATURES & BENEFITS



- Attaches using two-sided tape
- Sold in 15-ft length

SPECIFICATIONS

UNIVERSAL CHROME FENDER TRIM		
ALLIANCE P/N	LENGTH	MATERIAL
DML DUA1617	15'	CH

16

FENDER TRIM

FEATURES & BENEFITS



- Ends are welded and polished
- Mounts to tank straps
- All brackets and hardware included
- Sold individually
- Extra brackets are available as ABP FL0967BK

SPECIFICATIONS



UNIVERSAL FUEL TANK SKIRT	
ALLIANCE P/N	SIZE
ABP FL096	82"
ABP FL097	87"

FEATURES & BENEFITS



- Mounts to bezel using existing hardware
- Sold in pairs

SPECIFICATIONS



UNIVERSAL HEADLIGHT VISORS	
ALLIANCE P/N	DETAILS
DML DUA007	Double
DML DUA014	Single

FEATURES & BENEFITS



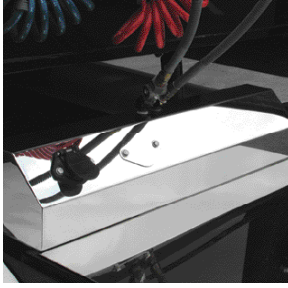
- Consists of aluminum frame with stainless steel skin
- Drilling of hood is required
- All hardware and mounting brackets supplied

SPECIFICATIONS



UNIVERSAL HEADLIGHT VISORS		
ALLIANCE P/N	DEPTH	WIDTH
DML DUA040	10 1/2"	41"

FEATURES & BENEFITS



- Mounts to frame behind cab or sleeper
- Attaches using supplied hardware

SPECIFICATIONS



UNIVERSAL TRAILER SERVICE BOX

ALLIANCE P/N

DML DUA078

GRILLES

17



FEATURES & BENEFITS

- Direct grille replacement
- Easy installation, clip attachment method
- Minimal hardware needed
- Easy and accurate fitment

SPECIFICATIONS



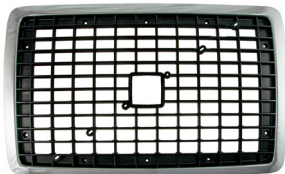
FREIGHTLINER	
ALLIANCE P/N	DESCRIPTION
ABP N795 91010	Freightliner Century 2005+, chrome grille replacement with bugscreen, includes logo, 29" L x 44 1/4" W
ABP N795 91010H	Freightliner Century 2005+, chrome grille replacement hardware kit
ABP N795 91020	Freightliner Columbia 2001+, chrome grille replacement with bugscreen, includes logo, 48" L x 24 1/2" W
ABP N795 91020H	Freightliner Columbia 2001+, chrome grille replacement hardware kit
ABP N795 91030	Freightliner Cascadia 2008+, chrome grille replacement with bugscreen, includes logo, 58" L x 34 1/2" W
ABP N795 91030H	Freightliner Cascadia 2008+, chrome grille replacement hardware kit

INTERNATIONAL	
ALLIANCE P/N	DESCRIPTION
ABP N795 91210	International ProStar 2008+, chrome grille replacement with bugscreen, 34" L x 53" W, no logo
ABP N795 91210H	International ProStar 2008+, chrome grille replacement hardware kit

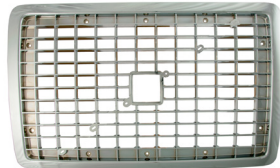
SPECIFICATIONS



MACK	
ALLIANCE P/N	DESCRIPTION
ABP N795 91130	Mack CX 2002+, chrome grille replacement, 27" L x 41" W, no logo, no bugscreen
ABP N795 91130H	Mack CX 2002+, chrome grille replacement hardware kit



VOLVO	
ALLIANCE P/N	DESCRIPTION
ABP N795 91110	Volvo VN/VNL 2004+, black & chrome grille replacement, 28 3/4" L x 45" W, no logo, no bug-screen
ABP N795 91110H	Volvo VN/VNL 2004+, black & chrome grille replacement hardware kit
ABP N795 91120	Volvo VN/VNL 2004+, chrome grille replacement, 26" L x 42" W, no logo, no bugscreen
ABP N795 91120H	Volvo VN/VNL 2004+, chrome grille replacement hardware kit



NOTES

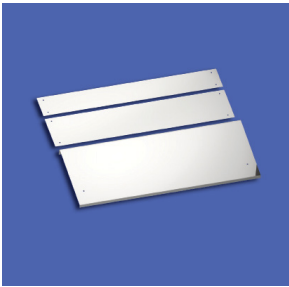
[illegible]

CLASSIC/ XL ACCESSORIES

18



FEATURES & BENEFITS



- ABP FLO30LB, for models with extra long toolboxes, consists of 2 panels that are attached by bolts, all hardware is supplied
- ABP FL311, for 2007 and newer models, consists of 3 panels that are attached by bolts and supplied silicone adhesive, all hardware supplied

SPECIFICATIONS



ABP FLO30

SPECIFICATIONS

Battery Box Panel, Classic - 31" Long

ABP FLO30LB

SPECIFICATIONS

Battery Box Panel, Classic - 43" Long

ABP FL311

SPECIFICATIONS

Battery/Toolbox Cover, Classic, 2007 & Newer - 31" Long

FEATURES & BENEFITS



- Fits both Classic and Classic XL hood models
- Mounts behind grille bezel
- Drilling of mounting holes through fiberglass hood required
- All mounting hardware included

SPECIFICATIONS



ABP FLO26A	
SPECIFICATIONS	Bug Deflector, Classic/Classic (XL Hood)

FEATURES & BENEFITS



- Easily mounts to underside of cab
- Designed for use with cowl panels; see description for the matching cowl panel part number
- Hardware, harness and lights supplied
- Sold in pairs

SPECIFICATIONS



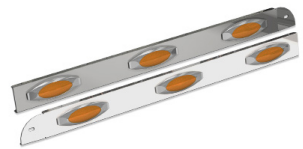
ABP FL222

SPECIFICATIONS Classic - Plain No Lights, 3.5" Skirts, Use With ABP FL221



ABP FL184

SPECIFICATIONS 2" Round Lights (6), 3" Skirts, Use With ABP FL207



ABP FL181

SPECIFICATIONS X2AG2, Amber Lights (3), 3.5" Skirts, Use With ABP FL180



ABP FL183

SPECIFICATIONS X2AG2-LED, Amber Lights (3), 3.5" Skirts, Use With ABP FL182

ABP FL215

SPECIFICATIONS X3AG2, Amber Lights (6), 3.5" Skirts, Use With ABP FL213

ABP FL216

SPECIFICATIONS X3AG2-LED, Amber Lights (6), 3.5" Skirts, Use With ABP FL214

FEATURES & BENEFITS



- Designed to replace factory cowl panel
- Drilling of underside of cab required
- Uses existing hardware, sold in pairs

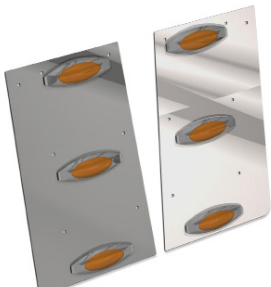
SPECIFICATIONS



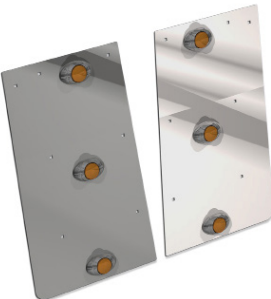
ABP FL221	
SPECIFICATIONS	Classic - Plain No Lights

ABP FL207	
SPECIFICATIONS	Classic - 2" Round INCAN Lights (3)

ABP FL180	
SPECIFICATIONS	Classic - X2AG2 INCAN Lights (3)



ABP FL182	
SPECIFICATIONS	Classic - X2AG2-LED Lights (3)



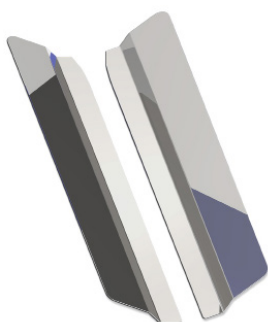
ABP FL213	
SPECIFICATIONS	Classic - X3AG2 INCAN Lights (3)

FEATURES & BENEFITS



- Attaches using two-sided tape
- No hardware needed
- Sold in pairs

SPECIFICATIONS



ABP FL024

SPECIFICATIONS

Classic/FLD 112/120 FL

FEATURES & BENEFITS



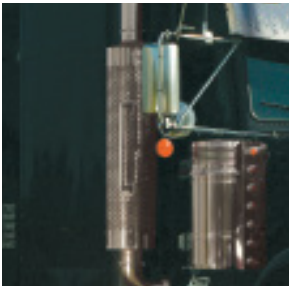
- Attaches using supplied hardware and two-sided tape
- Sold in pairs

SPECIFICATIONS



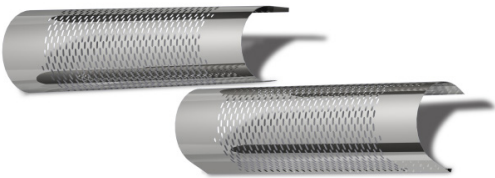
ABP FL344	
SPECIFICATIONS	Classic/FLD-112/120

FEATURES & BENEFITS



- For standard 5" exhaust only (shroud measures 58 1/2" long)
- Replaces factory perforated shields
- Shroud is extended to cover factory exhaust brackets
- Sold in pairs, no drilling required, attach to existing brackets
- Extra hardware and additional brackets supplied

SPECIFICATIONS



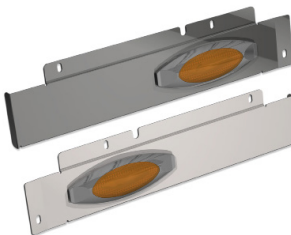
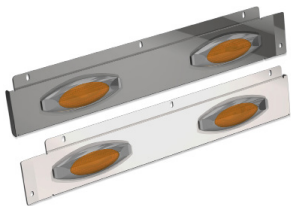
ABP FL218	
SPECIFICATIONS	Classic

FEATURES & BENEFITS



- Available in 18” and 25” long version
- Designed to continue the sleeper skirt to the end of the factory extender
- Hardware, harnesses and lights supplied
- Sold in pairs

SPECIFICATIONS



ABP FL220	
SPECIFICATIONS	Universal - Plain
LENGTH	25"

ABP FL177	
SPECIFICATIONS	Universal - X2AG2-LED
LENGTH	25"
LIGHTS	Amber Lights (2)

ABP FL199	
SPECIFICATIONS	Universal - Plain
LENGTH	18"

ABP FL200	
SPECIFICATIONS	Universal - X2AG2-INCAN
LENGTH	18"
LIGHTS	Amber Light (1)

ABP FL201	
SPECIFICATIONS	X2AG2-LED
LENGTH	18"
LIGHTS	Amber Light (1)

FEATURES & BENEFITS



ABP FL235

SPECIFICATIONS	X2ACG2-LED
LENGTH	18"
LIGHTS	Clear Light (1)

ABP FL204

SPECIFICATIONS	Universal - X3AG2-INCAN
LENGTH	18"
LIGHTS	Amber Lights (3)



ABP FL205

SPECIFICATIONS	Universal - X3AG2-LED
LENGTH	18"
LIGHTS	Amber Lights (3)



ABP FL236

SPECIFICATIONS	Universal - X3ACG2-LED
LENGTH	18"
LIGHTS	Clear Lights (3)

18

EXTENDER SKIRTS

FEATURES & BENEFITS



- Available in plain or with logo cutout
- Available for short hood and XL hood models
- All hardware included
- Sold in pairs

SPECIFICATIONS



ABP FLO02C	
SPECIFICATIONS	Classic (Short Hood) - Around Headlight



ABP FLO02A	
SPECIFICATIONS	Classic (Short Hood) - Below Headlight



ABP FL112	
SPECIFICATIONS	Classic (Short Hood) - Below Headlight, with Logo Cutout



ABP FL114	
SPECIFICATIONS	Classic (Short Hood) - Around Headlight, with Logo Cutout



ABP FLO02B	
SPECIFICATIONS	Classic (XL Hood) - Below Headlight



ABP FL113	
SPECIFICATIONS	Classic (XL Hood) - Below Headlight, with Logo Cutout



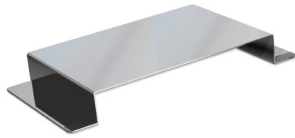
ABP FL115	
SPECIFICATIONS	Classic (XL Hood) - Around Headlight, with Logo Cutout

FEATURES & BENEFITS



- Designed to help prevent dust and particles from entering cab through fresh air intake on hood
- Attaches using two-sided tape
- Sold individually

SPECIFICATIONS



ABP FL239

SPECIFICATIONS

Classic

FEATURES & BENEFITS



- Available in plain or with logo cutout
- Attaches using supplied silicone
- Sold individually

SPECIFICATIONS



ABP FL108	
SPECIFICATIONS	Classic - Plain



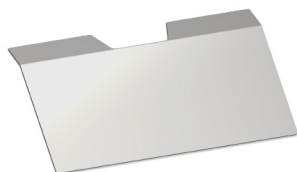
ABP FL107	
SPECIFICATIONS	Classic with Logo Cutout

FEATURES & BENEFITS



- Attaches using two-sided tape
- Sold individually

SPECIFICATIONS



ABP FL021

SPECIFICATIONS

Classic/FLD-120/112

18

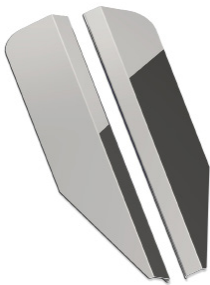
GLOVE BOX COVER

FEATURES & BENEFITS



- Mounts behind grille bezel on paint
- Drilling of hood required
- Hardware included, sold in pairs

SPECIFICATIONS



ABP FL026B	
SPECIFICATIONS	Classic (Short Hood)
ABP FL026C	
SPECIFICATIONS	Classic (XL Hood)

FEATURES & BENEFITS



- Under bumper license plate holder is hinged and hangs under the bumper; hinge and hardware are included
- Bumper face license plate holder attaches to the face of the bumper using existing bumper bolts
- Sold individually

SPECIFICATIONS



ABP FL010	
SPECIFICATIONS	Classic - 2 Plate, Under Bumper



ABP FL011	
SPECIFICATIONS	Classic - 3 Plate, Under Bumper



ABP FL065	
SPECIFICATIONS	Classic - Single Plate, Bumper Face



ABP FL066	
SPECIFICATIONS	Classic - Double Plate, Bumper Face



ABP FL067	
SPECIFICATIONS	Classic - Triple Plate, Bumper Face

FEATURES & BENEFITS



- Replaces factory panels
- Bolts onto hood directly behind fender
- Hardware supplied, sold in pairs

SPECIFICATIONS



ABP FL111	
SPECIFICATIONS	Classic (XL Hood) - with Logo Cutout
ABP FL032	
SPECIFICATIONS	Classic - Pair, Behind Fender
ABP FL032A	
SPECIFICATIONS	Classic (XL Hood) - with 1 Light Hole, Behind Fender
ABP FL032D	
SPECIFICATIONS	Classic - Driver Side, Behind Fender
ABP FL032P	
SPECIFICATIONS	Classic - Passenger Side, Behind Fender

FEATURES & BENEFITS



- Attaches to the rear frame
- Available plain or with oval light holes
- Attaches using supplied hardware; some drilling required
- Sold individually

SPECIFICATIONS



ABP FL295

SPECIFICATIONS

Classic - Oval Light Holes (3)

ABP FL296

SPECIFICATIONS

Classic - Plain

18

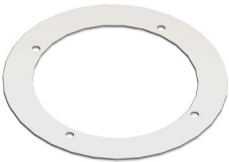
REAR FRAME COVER

FEATURES & BENEFITS



- Interior accessory
- Available plain or with logo cutout
- Attaches using existing hardware
- Sold individually

SPECIFICATIONS



ABP FL110	
SPECIFICATIONS	Classic - Plain



ABP FL109	
SPECIFICATIONS	Classic - with Logo Cutout

FEATURES & BENEFITS



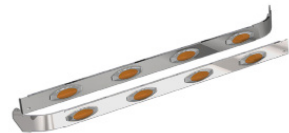
- Sleeper skirts to be used with extender skirt
- Available plain or with lights
- Some drilling may be required
- Sold in pairs
- 3 1/2" wide

SPECIFICATIONS



ABP FL219

SPECIFICATIONS	Universal - Plain, for use with Extenders
LENGTH	70"



ABP FL174

SPECIFICATIONS	Universal - X2AG2-INCAN, for use with Extenders
LENGTH	70"
LIGHTS	Amber Lights (4)

ABP FL176

SPECIFICATIONS	Universal - X2AG2-LED, for use with Extenders
LENGTH	70"
LIGHTS	Amber Lights (4)



ABP FL232

SPECIFICATIONS	Universal - X2ACG2-LED, for use with Extenders
LENGTH	70"
LIGHTS	Clear Lights (4)

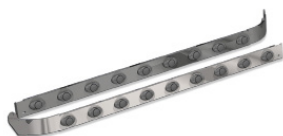
ABP FL209

SPECIFICATIONS	Universal - X3AG2-INCAN, for use with Extenders
LENGTH	70"
LIGHTS	Amber Lights (9)

SPECIFICATIONS



ABP FL210	
SPECIFICATIONS	Universal - X3AG2-LED, for use with Extenders
LENGTH	70"
LIGHTS	Amber Lights (9)



ABP FL231	
SPECIFICATIONS	Universal - X3ACG2-LED, for use with Extenders
LENGTH	70"
LIGHTS	Clear Lights (9)

FEATURES & BENEFITS



- Available in 4 different widths
- Attaches using supplied hardware, drilling required

SPECIFICATIONS



ABP FL071	
SPECIFICATIONS	Classic
WIDTH	1"



ABP FL072	
SPECIFICATIONS	Classic
WIDTH	2"



ABP FL073	
SPECIFICATIONS	Classic
WIDTH	3"



ABP FL074	
SPECIFICATIONS	Classic
WIDTH	4"

FEATURES & BENEFITS



- Designed to replace OEM stainless steel sun visor
- Mounts to existing factory roof brackets (part # FL22-38826-000; four required)
- Both 11" and 12 1/2" visors slope deeper than factory stainless visors
- No drilling required; all hardware supplied

SPECIFICATIONS



ABP FL020	
SPECIFICATIONS	Classic - Louvered
DEPTH	11" Extra Deep



ABP FL019	
SPECIFICATIONS	Classic - Non-Louvered
DEPTH	11" Extra Deep

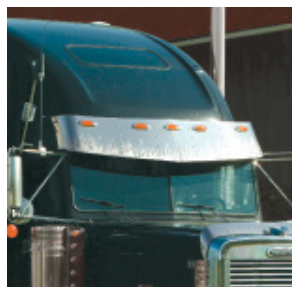


ABP FL090	
SPECIFICATIONS	Classic - Louvered
DEPTH	12.5" Extra Deep



ABP FL089	
SPECIFICATIONS	Classic - Non-Louvered
DEPTH	12.5" Extra Deep

FEATURES & BENEFITS



- 16" deep for Classic and FLD 120
- Designed to replace OEM composite visor
- All hardware included
- Light Hole models include mounting hardware and harnesses only
- Sold individually

SPECIFICATIONS



ABP FL367

SPECIFICATIONS Classic (Raised Roof)

DEPTH 16" Deep



ABP FL116

SPECIFICATIONS Classic (Raised Roof)

DEPTH 16" Deep

LIGHTS OEM Light Holes



ABP FL117

SPECIFICATIONS Classic (Raised Roof) - 2" Round INCAN

DEPTH 16" Deep

LIGHTS Amber Lights (5)



ABP FL120

SPECIFICATIONS Classic (Raised Roof) - X2AG2LED

DEPTH 16" Deep

LIGHTS LED Amber Lights (5)

ABP FL224

SPECIFICATIONS Classic (Raised Roof) - X2ACG2

DEPTH 16" Deep

LIGHTS LED Clear Lights (5)

CASCADIA ACCESSORIES

19



FEATURES & BENEFITS



- For 2008 and newer, available plain or with driver side etched
- Kits include driver's side battery box cover, passenger side toolbox panels and step trim
- Attaches using supplied hardware and two-sided tape

SPECIFICATIONS

ABP FL322

SPECIFICATIONS

Battery & Toolbox Cover/Step Trim Kit, Battery Box with Etched Logo, Includes ABP FL318, ABP FL319, ABP FL320

ABP FL321

SPECIFICATIONS

Plain Battery & Toolbox Cover/Step Trim Kit, Includes ABP FL317, ABP FL319, ABP FL320

ABP FL317

SPECIFICATIONS

Plain Battery Box, Driver Side



ABP FL318

SPECIFICATIONS

Battery Box Cover, With Etched Logo, Driver Side



ABP FL319

SPECIFICATIONS

Toolbox Cover, Plain, Passenger Side

ABP FL320

SPECIFICATIONS

Step Trim, Plain

FEATURES & BENEFITS



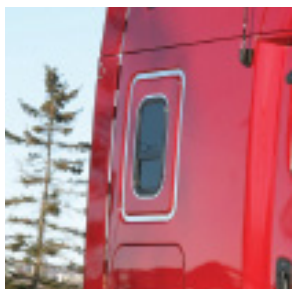
- Mounts behind grille bezel
- Drilling of mounting holes through hood required
- All mounting hardware supplied

SPECIFICATIONS



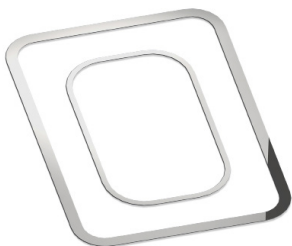
ABP FL330	
SPECIFICATIONS	2008 & Newer

FEATURES & BENEFITS



- Kit consists of an inner and outer trim ring
- Attaches using two-sided tape

SPECIFICATIONS



ABP FL333

SPECIFICATIONS

2008 & Newer

FEATURES & BENEFITS



- Stainless steel shades attach using supplied hardware and two-sided tape
- Sold in pairs

SPECIFICATIONS



ABP FL342	
SPECIFICATIONS	2008 & Newer

FEATURES & BENEFITS



- 6-piece kit
- Attaches using two-sided tape

SPECIFICATIONS



ABP FL328

SPECIFICATIONS

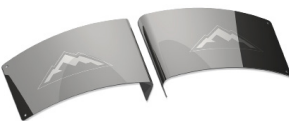
2008 & Newer

FEATURES & BENEFITS



- A stainless steel accent with an etched logo
- Highlight and protect the area around the hood latch
- Hardware included; sold in pairs

SPECIFICATIONS



ABP FL331	
SPECIFICATIONS	2008 & Newer - With Etched Logo

FEATURES & BENEFITS



- Accent the line of the hood
- Attaches using supplied hardware and two-sided tape
- Sold in pairs

SPECIFICATIONS



ABP FL336

SPECIFICATIONS

2008 & Newer

19

HOOD TRIM

FEATURES & BENEFITS



- Attaches to the bumper face using supplied hardware
- Drilling required

SPECIFICATIONS



ABP FL329	
SPECIFICATIONS	2008 & Newer - 1 Plate
ABP FL335	
SPECIFICATIONS	2008 & Newer - 2 Plate

FEATURES & BENEFITS



- With logo cutout
- Attaches using two-sided tape

SPECIFICATIONS



ABP FL332

SPECIFICATIONS

2008 & Newer - With Logo Cutout

19

REAR BUNK PANEL

FEATURES & BENEFITS



- Surrounds the signal light
- Attaches using two-sided tape
- Sold in pairs

SPECIFICATIONS



ABP FL334

SPECIFICATIONS

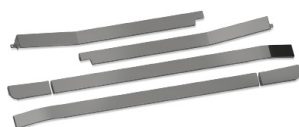
2008 & Newer

FEATURES & BENEFITS



- 3" wide skirts; attach using supplied hardware
- Kit includes cab, sleeper and extender panels
- (3/3/1) Each number represents the number of lights per panel, i.e., this kit has 3 lights on the cab skirt, 3 lights on the sleeper skirt and 1 light on the extender skirt

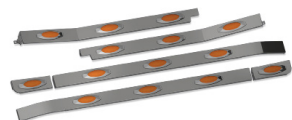
SPECIFICATIONS



ABP FL348

SPECIFICATIONS Cab/Sleeper/Extenders, 2008 & Newer - Plain

SIZE 60" Sleeper



ABP FL346

SPECIFICATIONS Cab/Sleeper/Extenders, 2008 & Newer - X2AG2-LED

SIZE 60" Sleeper

LIGHTS Amber Lights, (3/3/1)

ABP FL347

SPECIFICATIONS Cab/Sleeper/Extenders, 2008 & Newer - X2ACG2-LED

SIZE 60" Sleeper

LIGHTS Clear Lights, (3/3/1)

ABP FL326

SPECIFICATIONS Cab/Sleeper/Extenders, 2008 & Newer - Plain

SIZE 72" Sleeper



ABP FL324

SPECIFICATIONS Cab/Sleeper/Extenders, 2008 & Newer - X2AG2-LED

SIZE 72" Sleeper

LIGHTS Clear Lights, (3/4/1)

ABP FL325

SPECIFICATIONS Cab/Sleeper/Extenders, 2008 & Newer - X2ACG2-LED

SIZE 72" Sleeper

LIGHTS Clear Lights, (3/4/1)

SPECIFICATIONS

ABP FL339

SPECIFICATIONS

Cab/Sleeper/Extenders - With Fairings - 2008 & Newer - Plain

SIZE

72" Sleeper

ABP FL337

SPECIFICATIONS

Cab/Sleeper/Extenders - With Fairings - 2008 & Newer - X2AG2-LED

SIZE

72" Sleeper

LIGHTS

Amber Lights, (3/4/1)

ABP FL338

SPECIFICATIONS

Cab/Sleeper/Extenders - With Fairings - 2008 & Newer - X2ACG2-LED

SIZE

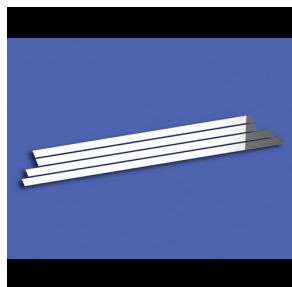
72" Sleeper

LIGHTS

Clear Lights, (3/4/1)



FEATURES & BENEFITS



- Attaches using two-sided tape
- To complete the look with battery/toolbox covers
- Sold in 4-piece set

SPECIFICATIONS



ABP FL320

SPECIFICATIONS

2008 & Newer

19

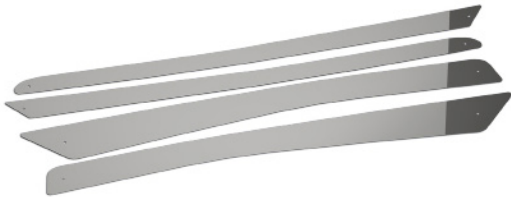
STEP TRIM

FEATURES & BENEFITS



- Sold in 4-piece kit
- Attaches using two-sided tape

SPECIFICATIONS



ABP FL327	
SPECIFICATIONS	2008 & Newer

NOTES

[illegible]

COLUMBIA ACCESSORIES

20



FEATURES & BENEFITS



- Mounts behind grille bezel
- Drilling of mounting holes through hood required
- All mounting hardware supplied

SPECIFICATIONS



ABP FL083

SPECIFICATIONS	None
----------------	------

FEATURES & BENEFITS



- 3.5” cab skirts are set back and do not interfere with fuel-filling
- Attaches using supplied hardware
- All cab skirts have a block heater hole on the driver’s side
- Sold in pairs
- Cannot be used with chassis fairings

SPECIFICATIONS

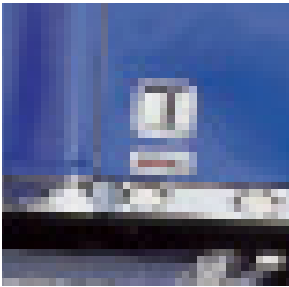


ABP FL260	
SPECIFICATIONS	Plain - With Block Heater
WIDTH	3.5"

ABP FL264	
SPECIFICATIONS	X2AG2-LED - With Block Heater
WIDTH	3.5"
LIGHTS	Amber Lights (3)

ABP FL268	
SPECIFICATIONS	With X2ACG2-LED - With Block Heater
WIDTH	3.5"
LIGHTS	Clear Lights (3)

FEATURES & BENEFITS



- Stainless trim around door handle and logo
- Attaches using two-sided tape
- Sold in pairs

SPECIFICATIONS



ABP FL088

SPECIFICATIONS

None

FEATURES & BENEFITS



- No hardware required
- Attaches using two-sided tape
- Sold in pairs

SPECIFICATIONS



ABP FL024A

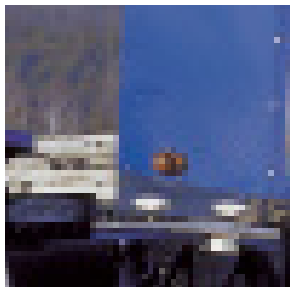
SPECIFICATIONS

Columbia/Coronado/Century Class

20

DOOR WINDOW DEFLECTOR

FEATURES & BENEFITS



- Available in the 21" and 26" lengths
- Hardware, harness and lights supplied; sold in pairs
- Cannot be used with chassis fairings

SPECIFICATIONS

ABP FL287

SPECIFICATIONS	Plain
SIZE	21" Long, 3.5" Wide



ABP FL285

SPECIFICATIONS	X2AG2-LED
SIZE	21" Long, 3.5" Wide
LIGHTS	Amber Light (1)

ABP FL286

SPECIFICATIONS	X2ACG2-LED
SIZE	21" Long, 3.5" Wide
LIGHTS	Clear Light (1)

ABP FL262

SPECIFICATIONS	Plain
SIZE	26" Long, 3.5" Wide

ABP FL266

SPECIFICATIONS	X2AG2-LED
SIZE	26" Long, 3.5" Wide
LIGHTS	Amber Lights (2)



ABP FL270

SPECIFICATIONS	X2ACG2-LED
SIZE	26" Long, 3.5" Wide
LIGHTS	Clear Lights (2)

FEATURES & BENEFITS



- Attaches using supplied hardware and two-sided tape
- Sold in pairs

SPECIFICATIONS



ABP FL075

SPECIFICATIONS

None

20

FENDER GUARD TRIM

FEATURES & BENEFITS



- Replaces OEM mesh panel
- No mounting hardware required

SPECIFICATIONS



ABP FL082

SPECIFICATIONS

None

20

GRILLE FILLER PANEL

FEATURES & BENEFITS



- A 6-piece set of trim strips
- Attaches to cab and hood using two-sided tape

SPECIFICATIONS



ABP FL085	
SPECIFICATIONS	None
WIDTH	3.5"

FEATURES & BENEFITS



- Fits to factory license plate holes in bumper
- Hold 3 license plates
- Drilling of bumper required
- Attaches using supplied hardware

SPECIFICATIONS



ABP FLO84	
SPECIFICATIONS	None

FEATURES & BENEFITS



- Attaches using two-sided tape
- Sold in pairs

SPECIFICATIONS



ABP FL087	
SPECIFICATIONS	Pre-2006



ABP FL315	
SPECIFICATIONS	2006 & Newer

FEATURES & BENEFITS



- Kits include lights, wiring harness and mounting hardware
- Available for rear-mount or side-mount exhaust
- (3/4/1) Each number represents the amount of lights per panel, i.e., this kit has 3 lights on the cab skirt, 4 lights on the sleeper skirt and 1 light on the extender skirt
- Cannot be used with chassis fairings

SPECIFICATIONS

ABP FL290

SPECIFICATIONS Cab - Rear-Mount Exhaust - Mid Roof - Plain

SIZE 70" Sleeper/21" Extender

ABP FL288

SPECIFICATIONS Cab - Rear-Mount Exhaust - Mid Roof

SIZE 70" Sleeper/21" Extender

LIGHTS X2AG2-LED, Amber Lights (3/4/1)



ABP FL289

SPECIFICATIONS Cab - Rear-Mount Exhaust - Mid Roof

SIZE 70" Sleeper/26" Extender

LIGHTS X2ACG2-LED, Amber Lights (3/4/1)

ABP FL263

SPECIFICATIONS Cab - Rear-Mount Exhaust - Mid Roof - Plain

SIZE 70" Sleeper/26" Extender

ABP FL267

SPECIFICATIONS Cab - Rear-Mount Exhaust - Mid Roof

SIZE 70" Sleeper/26" Extender

LIGHTS X2AG2-LED, Amber Lights (3/4/2)

SPECIFICATIONS



ABP FL271

SPECIFICATIONS	Cab - Rear-Mount Exhaust - Mid Roof
SIZE	70" Sleeper/26" Extender
LIGHTS	X2ACG2-LED, Clear Lights (3/4/2)

ABP FL293

SPECIFICATIONS	Cab - Side-Mount Exhaust - Mid Roof - Plain
SIZE	70" Sleeper/21" Extender

ABP FL291

SPECIFICATIONS	Cab - Side-Mount Exhaust - Mid Roof
SIZE	70" Sleeper/21" Extender
LIGHTS	X2AG2-LED, Amber Lights (3/4/1)

ABP FL292

SPECIFICATIONS	Cab - Side-Mount Exhaust - Mid Roof
SIZE	70" Sleeper/21" Extender
LIGHTS	X2ACG2-LED, Clear Lights (3/4/1)

ABP FL280

SPECIFICATIONS	Cab - Side-Mount Exhaust - Mid Roof - Plain
SIZE	70" Sleeper/26" Extender

ABP FL276

SPECIFICATIONS	Cab - Side-Mount Exhaust - Mid Roof
SIZE	70" Sleeper/26" Extender
LIGHTS	X2AG2-LED, Amber Lights (3/4/2)

ABP FL278

SPECIFICATIONS	Cab - Side-Mount Exhaust - Mid Roof
SIZE	70" Sleeper/26" Extender
LIGHTS	X2ACG2-LED, Clear Lights (3/4/2)

20

SKIRTING KIT

FEATURES & BENEFITS



- 3.5" wide skirts
- Attaches using supplied hardware; lights and harness included
- Available for rear-mount exhaust and side-mount exhaust
- Sold in pairs
- Cannot be used with chassis fairings

SPECIFICATIONS



ABP FL261	
SPECIFICATIONS	Rear-Mount Exhaust - Mid Roof - Plain
SIZE	70" Wide/3.5" Wide



ABP FL265	
SPECIFICATIONS	Rear-Mount Exhaust - Mid Roof
SIZE	70" Wide/3.5" Wide
LIGHTS	X2AG2-LED, Amber Lights (4)



ABP FL269	
SPECIFICATIONS	Rear-Mount Exhaust - Mid Roof
SIZE	70" Wide/3.5" Wide
LIGHTS	X2ACG2-LED, Clear Lights (4)



ABP FL279	
SPECIFICATIONS	Side-Mount Exhaust - Mid Roof - Plain
SIZE	70" Wide/3.5" Wide

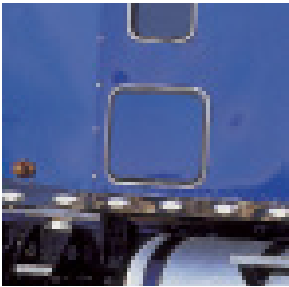


ABP FL275	
SPECIFICATIONS	Side-Mount Exhaust - Mid Roof
SIZE	70" Wide/3.5" Wide
LIGHTS	X2AG2-LED, Amber Lights (4)



ABP FL277	
SPECIFICATIONS	Side-Mount Exhaust - Mid Roof
SIZE	70" Wide/3.5" Wide
LIGHTS	X2ACG2-LED, Clear Lights (4)

FEATURES & BENEFITS



- Attaches using two-sided tape
- Sold individually

SPECIFICATIONS



ABP FL314	
SPECIFICATIONS	2006 & Newer
ABP FL076	
SPECIFICATIONS	Columbia/Century Class, Pre-2006

FEATURES & BENEFITS



- 3" wide extension for the OEM composite sun visor
- Attaches using supplied hardware and two-sided tape

SPECIFICATIONS



ABP FL312	
SPECIFICATIONS	2006 & Newer
ABP FL079	
SPECIFICATIONS	Columbia/Century Class, Pre-2005

FEATURES & BENEFITS



- Sold in a full kit or separately
- Attaches using supplied hardware and two-sided tape

SPECIFICATIONS



ABP FL062	
SPECIFICATIONS	Columbia/Century Class, Pre-2005 - 3-Piece Set, Includes Visor Insert & Side Inserts
ABP FL246	
SPECIFICATIONS	Columbia/Century Class, Pre-2005 - Visor Only
ABP FL240	
SPECIFICATIONS	Columbia/Century Class, Pre-2005 - Side Sections Only

FEATURES & BENEFITS



- Available for raised roof and mid roof models
- Drilling of roof required
- All hardware and mounting brackets
- Uses existing OEM lights

SPECIFICATIONS

ABP FL284	
SPECIFICATIONS	Mid Roof XT - FL
ABP FL281	
SPECIFICATIONS	Mid Roof - FL
ABP FL283	
SPECIFICATIONS	Raised Roof - FL - No Roof Window
ABP FL282	
SPECIFICATIONS	Raised Roof - FL - With Roof Window



FEATURES & BENEFITS



- Attaches using two-sided tape
- Sold individually

SPECIFICATIONS



ABP FL313

SPECIFICATIONS

2006 & Newer

20

UPPER VENT TRIM

FEATURES & BENEFITS



- Attaches using two-sided tape
- Sold in pairs

SPECIFICATIONS



ABP FL086

SPECIFICATIONS

None

20

WHEEL WELL TRIM

FEATURES & BENEFITS



- Fit 25 1/2" x 15 1/4" window
- Attaches using two-sided tape

SPECIFICATIONS



ABP FL091	
SPECIFICATIONS	Columbia/Century Class
SIZE	25 1/2" x 15 1/4"

NOTES

[illegible]

CORONADO ACCESSORIES

21



FEATURES & BENEFITS



- 36" battery box covers for Coronado toolboxes, sold in pairs
- Attaches using supplied hardware and two-sided tape

SPECIFICATIONS



ABP FL274

LENGTH	36"
---------------	-----

21

BATTERY BOX COVER

FEATURES & BENEFITS



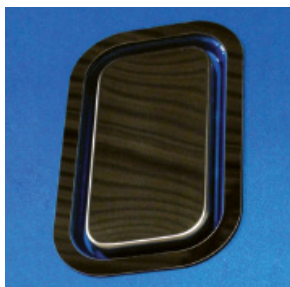
- Mounts behind grille
- Drilling of mounting hole through fiberglass hood required
- All mounting hardware included

SPECIFICATIONS



ABP FL098	
SPECIFICATIONS	None
ABP FL349	
SPECIFICATIONS	2010 & Newer

FEATURES & BENEFITS



- Attaches using two-sided tape
- Sold in pairs

SPECIFICATIONS



ABP FL356

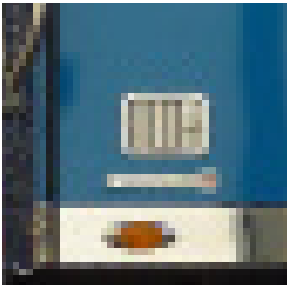
SPECIFICATIONS

2010 & Newer

21

BUNK VENT TRIM

FEATURES & BENEFITS



- Stainless accent around door handle trim
- Attaches using two-sided tape
- Sold in pairs

SPECIFICATIONS



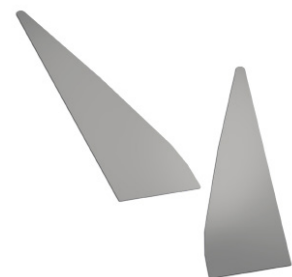
ABP FL355	
SPECIFICATIONS	2010 & Newer

FEATURES & BENEFITS



- For 2010 and newer models
- No hardware required
- Attaches using two-sided tape
- Sold in pairs

SPECIFICATIONS



ABP FL365

SPECIFICATIONS

2010 & Newer

21

DOOR POST ACCENT

FEATURES & BENEFITS



- No hardware required
- Attaches using two-sided tape
- Sold in pairs

SPECIFICATIONS

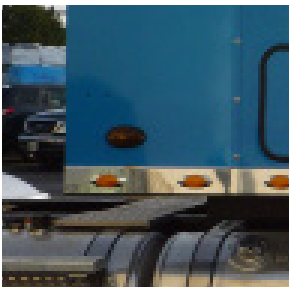


ABP FL024A

SPECIFICATIONS

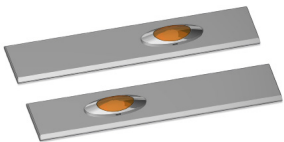
Coronado/Century Class/Columbia

FEATURES & BENEFITS

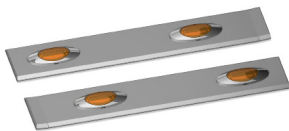


- For 2010 and newer models
- Lights, hardware and harness supplied; sold in pairs

SPECIFICATIONS



ABP FL366	
SPECIFICATIONS	2010 & Newer - With 1 Light
LENGTH	21"



ABP FL396	
SPECIFICATIONS	2010 & Newer - With 2 OEM Lights
LENGTH	25 3/4"

FEATURES & BENEFITS



- Below headlight and headlight surround fender guards
- Attaches using supplied hardware
- Sold in pairs

SPECIFICATIONS



ABP FL364	
SPECIFICATIONS	Below Headlight - Set Back Axle - 2010 & Newer



ABP FL351	
SPECIFICATIONS	Below Headlight - Set Forward Axle - 2010 & Newer



ABP FL099	
SPECIFICATIONS	Below Headlight - Pre-2010



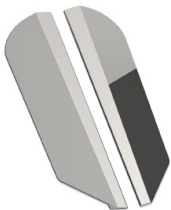
ABP FL350	
SPECIFICATIONS	Headlight Surround - Set Forward Axle - 2010 & Newer

FEATURES & BENEFITS



- Mounts behind grille bezel on paint
- Drilling of hood required
- Sold in pairs; all hardware supplied

SPECIFICATIONS



ABP FL101	
SPECIFICATIONS	None



ABP FL352	
SPECIFICATIONS	Set Forward Axle - 2010 & Newer
LENGTH	15"



ABP FL353	
SPECIFICATIONS	Set Forward Axle - 2010 & Newer
LENGTH	20"

FEATURES & BENEFITS



- Under bumper license plate holder is hinged and hangs under the bumper; hinge and hardware are included
- Bumper face license plate holder attaches to the face of the bumper using existing bumper bolts
- Sold individually

SPECIFICATIONS



ABP FL395	
SPECIFICATIONS	Classic - Triple Plate

FEATURES & BENEFITS



- Protects against stone chips
- Attaches using supplied hardware
- Sold individually

SPECIFICATIONS



ABP FL100	
SPECIFICATIONS	None

FEATURES & BENEFITS



- For 2010 and newer models
- Available with Freightliner logo cutout, Coronado logo cutout or in plain
- Mounts to the rear frame
- Attaches using supplied hardware; some drilling required

SPECIFICATIONS



ABP FL359	
SPECIFICATIONS	2010 & Newer - Plain



ABP FL360	
SPECIFICATIONS	2010 & Newer - With Freightliner Cutout



ABP FL361	
SPECIFICATIONS	2010 & Newer - With Coronado Cutout

FEATURES & BENEFITS



- For pre-2005 Coronado models
- 3" wide extension for the factory composite sun visor
- Attaches using supplied hardware

SPECIFICATIONS



ABP FL079

SPECIFICATIONS

Coronado/Columbia/
Century Class, Pre-2005

21

SUN VISOR EXTENSION STRIPS

FEATURES & BENEFITS



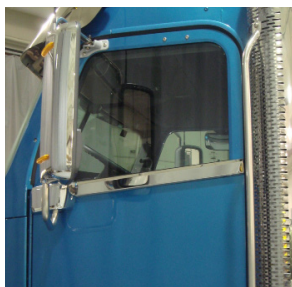
- Attaches using two-sided tape
- Sold in pairs

SPECIFICATIONS



ABP FL104	
SPECIFICATIONS	None

FEATURES & BENEFITS



- For 2010 and newer models
- Attaches using two-sided tape

SPECIFICATIONS



ABP FL358

SPECIFICATIONS

2010 & Newer

21

UNDER WINDOW DOOR ACCENT

FEATURES & BENEFITS



- For 2010 and newer models
- Attaches using supplied hardware and two-sided tape
- Sold in a 4-piece kit

SPECIFICATIONS



ABP FL368	
SPECIFICATIONS	2010 & Newer

NOTES

[illegible]

CENTURY CLASS ACCESSORIES

22



FEATURES & BENEFITS



- Drilling of fiberglass hood required
- Attaches using supplied hardware

SPECIFICATIONS



ABP FL272	
SPECIFICATIONS	2005 & Newer
ABP FL060	
SPECIFICATIONS	1997-2004

FEATURES & BENEFITS



- 3-piece bumper insert panels
- Drilling required
- Attaches using supplied hardware

SPECIFICATIONS



ABP FL009B	
SPECIFICATIONS	None

FEATURES & BENEFITS



- Attaches using two-sided tape
- No hardware required
- Sold in pairs

SPECIFICATIONS



ABP FL024A

SPECIFICATIONS

Century Class/Columbia/Coronado

22

DOOR WINDOW DEFLECTOR

FEATURES & BENEFITS



- 3-piece grille trim
- Includes grille deflectors and below-grille trim
- Drilling required
- Attaches using supplied hardware

SPECIFICATIONS



ABP FL026G	
SPECIFICATIONS	None

FEATURES & BENEFITS



- Drilling of bumper required
- Attaches using supplied hardware
- Sold individually

SPECIFICATIONS



ABP FLO61	
SPECIFICATIONS	None

FEATURES & BENEFITS



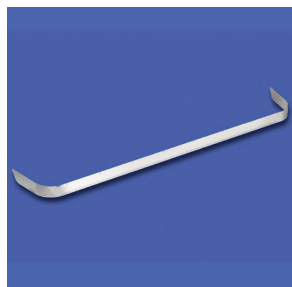
- Attaches using two-sided tape
- Sold individually

SPECIFICATIONS



ABP FL076	
SPECIFICATIONS	Columbia/Century Class

FEATURES & BENEFITS



- For pre-2005 models
- 3" wide extension for the OEM composite sun visor
- Attaches using two-sided tape

SPECIFICATIONS



ABP FL079

SPECIFICATIONS	
Century Class/Columbia - Pre-2005	

22

SUN VISOR EXTENSION STRIP

FEATURES & BENEFITS



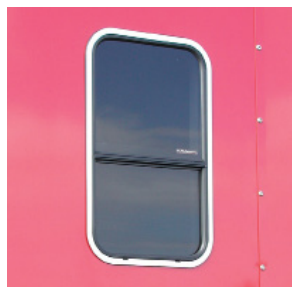
- Sold in a full kit or separately
- For pre-2005 models
- Attaches using supplied hardware and two-sided tape

SPECIFICATIONS



ABP FL062	
SPECIFICATIONS	Columbia/Century Class, Pre-2005 - 3-Piece Set, Includes Visor Insert & Side Inserts
ABP FL246	
SPECIFICATIONS	Columbia/Century Class, Pre-2005 - Visor Only
ABP FL240	
SPECIFICATIONS	Columbia/Century Class, Pre-2005 - Side Sections Only

FEATURES & BENEFITS



- Fit 25 1/2" x 15 1/4" windows
- Attaches using two-sided tape
- Sold individually

SPECIFICATIONS



ABP FL091

SPECIFICATIONS

Century Class/Columbia

22

WINDOW TRIM

SEVERE DUTY/ FLD-112/120 & M2 BUSINESS CLASS

23



FEATURES & BENEFITS



- Mounts behind grille bezel
- ABP FL037 mounts behind grab handle
- Drilling of mounting holes through hood required
- Applied using supplied hardware

SPECIFICATIONS



ABP FL398	
SPECIFICATIONS	114 Severe Duty - 2013 & Newer
ABP FL037	
SPECIFICATIONS	FLD 120/112
ABP FL103	
SPECIFICATIONS	M2 100 Business Class
ABP FL256	
SPECIFICATIONS	M2 112 Business Class

FEATURES & BENEFITS



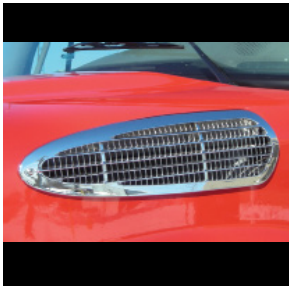
- Attaches to bumper using two-sided tape
- Panels are pre-taped
- No hardware required
- Sold in 3-piece kit

SPECIFICATIONS



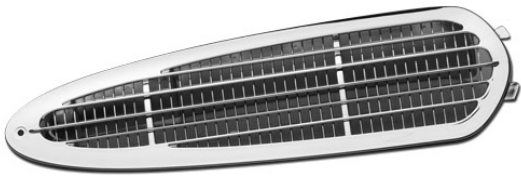
ABP FL009	
SPECIFICATIONS	FLD 120/112

FEATURES & BENEFITS



- Replaces OEM grille
- Uses existing hardware
- Sold individually

SPECIFICATIONS



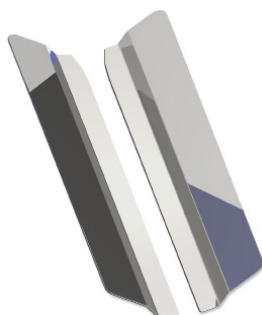
ABP FL340	
SPECIFICATIONS	M2 106
ABP FL341	
SPECIFICATIONS	M2 112

FEATURES & BENEFITS



- Attaches using two-sided tape
- No hardware required
- Sold in pairs

SPECIFICATIONS



ABP FL024

SPECIFICATIONS

FLD 112/120/Classic

23

DOOR WINDOW DEFLECTOR

FEATURES & BENEFITS



- Attaches using supplied hardware and two-sided tape
- Drilling of door is required
- Sold in pairs

SPECIFICATIONS



ABP FL344

SPECIFICATIONS

FLD-112/120/Classic

23

DOOR WINDOW SHADE

FEATURES & BENEFITS



- Attaches using supplied hardware
- Sold in pairs

SPECIFICATIONS



ABP FL397	
SPECIFICATIONS	Below Headlight - Set Back Axle - 114 Severe Duty - 2013 & Newer



ABP FL001	
SPECIFICATIONS	FLD 120/112 - Below Headlight



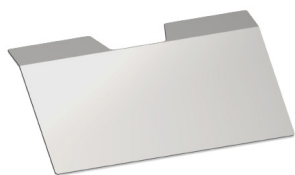
ABP FL002E	
SPECIFICATIONS	Severe Duty - Below Headlight

FEATURES & BENEFITS



- Attaches using two-sided tape

SPECIFICATIONS



ABP FLO21

SPECIFICATIONS

FLD-120/112/Classic

23

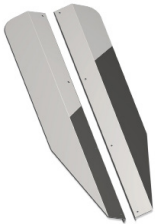
GLOVE BOX COVER

FEATURES & BENEFITS

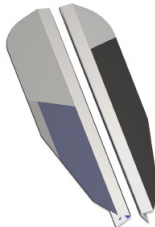


- Mounts behind grille bezel on paint
- Drilling of hood required
- Attaches using supplied hardware

SPECIFICATIONS

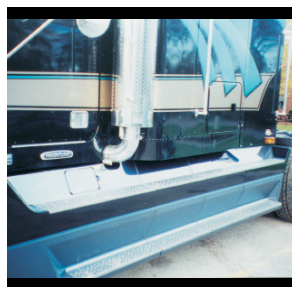


ABP FLO26D	
SPECIFICATIONS	FLD 120



ABP FLO26F	
SPECIFICATIONS	Severe Duty

FEATURES & BENEFITS



- Top front scuff fairing is for rear-mounted exhaust
- Top center scuff fairing is 39" long
- Top edge of panels hook over top edge of fairing
- No drilling or hardware required
- Sold in pairs
- Attaches using two-sided tape

SPECIFICATIONS



ABP FL003B

SPECIFICATIONS

Rear-Mount Exhaust, FLD 120 - Top Front



ABP FL005A

SPECIFICATIONS

FLD 120/112 - Top Center

LENGTH

39"



ABP FL004

SPECIFICATIONS

FLD 120/112 - Top Rear

FEATURES & BENEFITS



- Drilling of roof required
- Attaches using supplied hardware and brackets

SPECIFICATIONS



ABP FL015	
SPECIFICATIONS	50/60/70/80/106/112 - Pre-2003 - Business Class - Standard Roof



ABP FL015R	
SPECIFICATIONS	50/60/70/80/106/112 - Pre-2003 - Raised Roof



ABP FL294	
SPECIFICATIONS	M2 106/112 Business Class - 2003 & Newer - Replaces OEM Fiberglass Visor, Standard Roof



ABP FL105	
SPECIFICATIONS	M2 Business Class - 2003 & Newer

NOTES

[illegible]

DISPLAYS

24



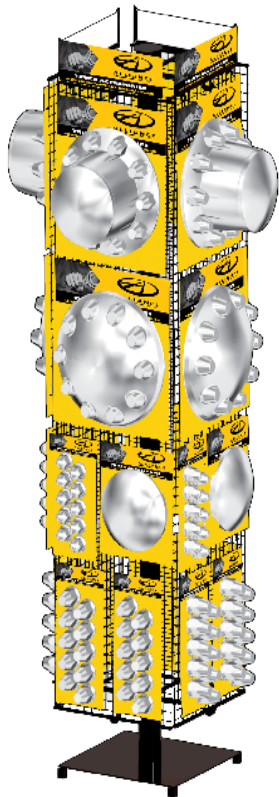
SPECIFICATIONS

24

DISPLAYS



RETAIL FLOOR DISPLAY RACK	
ALLIANCE P/N	DESCRIPTION
ABP 99980	Standard Retail Floor Display Rack System. Manufactured with a heavy-gauge steel frame with wood panels & aluminum slats for long life. Includes display hooks & hardware. Assembly required.



COMPACT ROTATING FLOOR DISPLAY	
ALLIANCE P/N	DESCRIPTION
ABP 30200	Small Form Factor Rotating Retail Floor Display. With heavy-gauge wire panels & steel base & support. Includes display hooks & hardware. Assembly required.

CROSS-REFERENCE

25



AMERICAN CHROME COMPANY	
COMP. P/N	ALLIANCE P/N
18010	ABP 84148
18350	ABP 18350
18352	ABP 18352
17508	ABP 84890
17000	ABP 43500
17001	ABP 43501
17002	ABP 43503
17003	ABP 43504
16930	ABP 43200
16931	ABP 43201
16932	ABP 43203
16933	ABP 43204
16950	ABP 43300
16951	ABP 43301
16972	ABP 43303
16973	ABP 43304
16970	ABP 43320
16971	ABP 43321
16972	ABP 43323
16973	ABP 43324
84023	ABP 84023

DTNA	
COMP. P/N	ALLIANCE P/N
A17-16132-004	ABP N795 91010
A17-16132-001	ABP N795 91010
A17-15251-003	ABP N795 91020
A17-15251-002	ABP N795 91020
A17-15251-000	ABP N795 91020
A17-15107-000	ABP N795 91020
A17-19112-011	ABP N795 91030
A17-16026-000	ABP N795 91030
A17-15624-002	ABP N795 91030
A17-15624-003	ABP N795 91030
A17-19112-000	ABP N795 91030
A17-19112-007	ABP N795 91030
A17-19112-011	ABP N795 91030

INTERNATIONAL	
COMP. P/N	ALLIANCE P/N
3612-816-C93	ABP N795 91210

MACK	
COMP. P/N	ALLIANCE P/N
6MF-580-M	ABP N795 91130
20791629	ABP N795 91130
25166278	ABP N795 91130

VOLVO	
COMP. P/N	ALLIANCE P/N
20505759	ABP N795 91110
8084221	ABP N795 91120

NOTES

[illegible]



Find your nearest dealer at
alliancetruckparts.com



DTNA/PSM-M-997. Specifications are subject to change without notice. Copyright © Daimler Trucks North America LLC. All rights reserved. Alliance Truck Parts is a brand of Daimler Trucks North America LLC, a Daimler company. ¹For nearly all heavy-duty truck makes and models. ²See warranty for complete details and limitations.