



# DRIVELINES



## ALL-MAKES HEAVY-DUTY DRIVELINES

---

With parts and accessories for all makes and models<sup>1</sup>, Alliance Parts is the smartest choice for value on the road. Readily available, easily affordable and assured in quality, Alliance has everything you need to deliver.

## WARRANTY

---

Alliance products are backed by a 1-year/unlimited-mile standard warranty. Additional warranty coverage may apply where specified.

Illustrations and photographs used in this catalog may vary slightly from the actual product. Prototype samples are sometimes used for photography. The production parts may vary slightly.

Availability of products shown in this catalog is subject to change without notice.

<sup>1</sup>For nearly all heavy-duty truck makes and models.

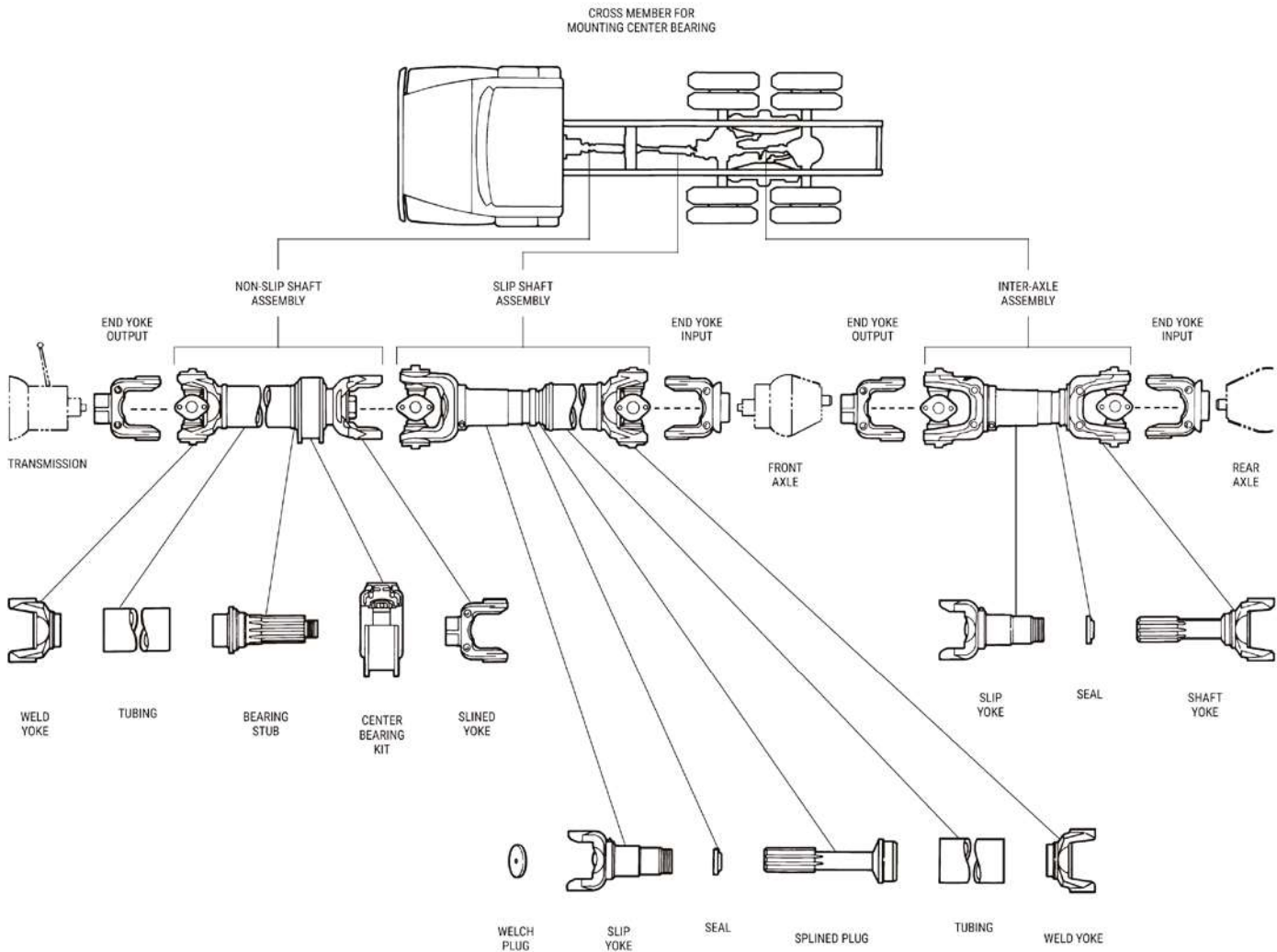
<b>1</b>	<b>DRIVELINES</b>	
	MADE-TO-ORDER DRIVELINES.....	5
	ORDERING INFORMATION.....	6



**DRIVELINES**

**1**

**DRIVELINES**



## FEATURES AND BENEFITS

- Custom, made-to-order drivelines guarantee the correct specifications for each application
- Minimized downtime: Most drivelines are manufactured and shipped out within 48 hours
- ISO 9001 certified manufacturing standards ensure smooth, reliable flow of power from the engine to the wheels

## WORN DRIVELINE SYMPTOMS

Typical driveline failures are not sudden. Driveshafts tend to deteriorate over time, gradually increasing wear on related parts components. Watch out for the following symptoms:

- Worn or damaged drive shafts can prevent the wheels from turning properly, usually felt as abnormal resistance during sharp turns
- In some cases, worn driveshafts produce a low squeak that increases with speed
- Worn or damaged driveshafts typically cause excessive vibrations, especially at speed
- Heavier loads accelerate wear

## HOW TO ORDER

---

Ordering your replacement driveline components requires only a few simple steps. Each step is described in detail on the following pages.

1. Determine the series of driveline
2. Determine the type of assembly
3. Determine the length of the driveline
4. Contact your Alliance Truck Parts dealer to order

## 1. DETERMINE THE SERIES OF DRIVELINE

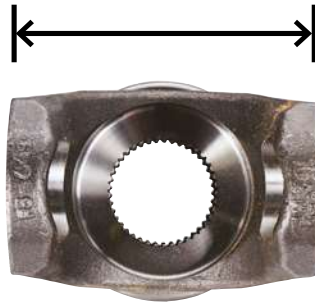
To determine the series, measure the yoke of the existing part by making one or more of the following measurements:

- Distance across ears
- Distance between tabs
- Bearing cap diameter

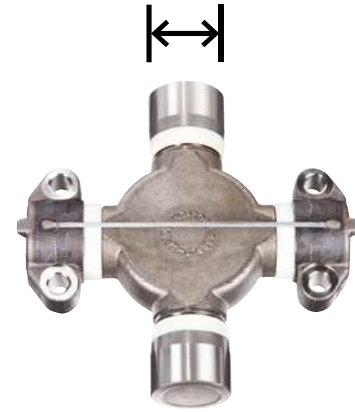
**DISTANCE  
ACROSS EARS**



**DISTANCE  
BETWEEN TABS**



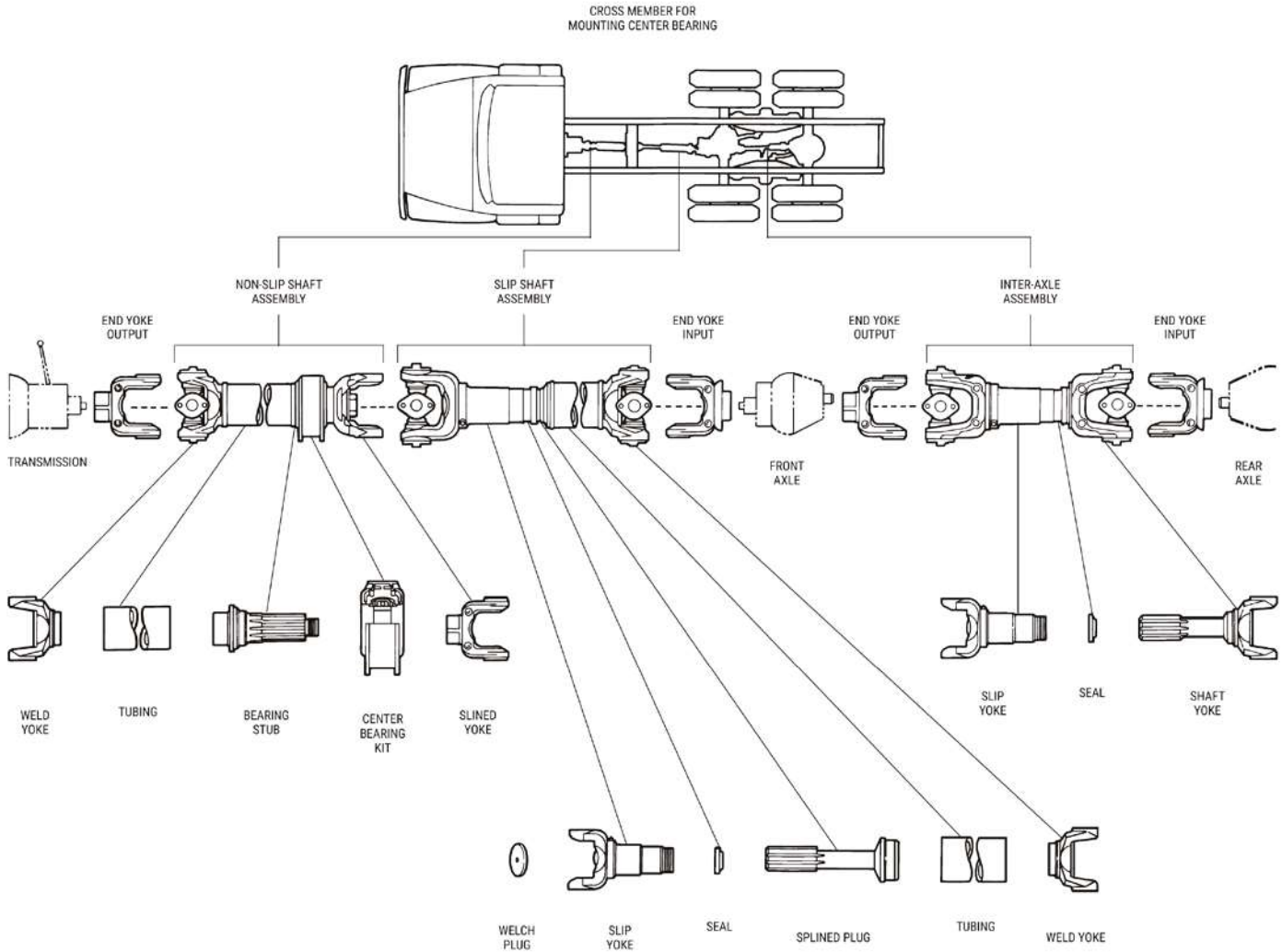
**BEARING CAP  
DIAMETER**



SERIES	DISTANCE ACROSS EARS	DISTANCE BETWEEN TABS	BEARING CAP DIAMETER
1000	-	-	0.938
1100	2.656	-	0.938
1210	2.438	-	1.062
1240	2.875	-	1.125
1310	3.469	3.219	1.062
1330	3.875	3.625	1.062
1340	3.953	-	1.25
1350	3.875	3.625	1.188
1410	4.438	4.188	1.188
1480	4.438	4.188	1.375
1550	5.25	4.969	1.375
1610	5.312	5.312	1.875
1710	6.094	6.19	1.938
1760	7	7.094	1.938
1810	7.547	7.643	1.938
1880	8.094	-	2.188
SPL140	-	5.457	1.938
SPL170	-	6.456	2.166
SPL250	-	6.412	2.362
SPL90	-	4.957	1.625

2. DETERMINE THE TYPE OF ASSEMBLY

To determine assembly type, compare the existing part with the parts and descriptions shown in the tables and diagrams below.



HANGER BEARING ASSEMBLY DESCRIPTIONS

ALL-MAKES P/N	DESCRIPTION
1710HB	1710 Hanger Bearing Assembly
1760HB	1760 Hanger Bearing Assembly
1810HB	1810 Hanger Bearing Assembly
20RPLHB	20 RPL Hanger Bearing Assembly
25RPLHB	25 RPL Hanger Bearing Assembly
35RPLHB	35 RPL Hanger Bearing Assembly
35RPLSS	35 RPL Inter-Axle Assembly
SPL170HB	SPL170 Hanger Bearing Assembly
SPL250HB	SPL250 Hanger Bearing Shaft Assembly



**INTER-AXLE ASSEMBLY DESCRIPTIONS**

<b>ALL-MAKES P/N</b>	<b>DESCRIPTION</b>
1710IA	1710 Inter-Axle Assembly
20RPLIA	20 RPL Inter-Axle Assembly
SPL170IA	SPL170 Inter-Axle Assembly

**SLIP SHAFT ASSEMBLY DESCRIPTIONS**

<b>ALL-MAKES P/N</b>	<b>DESCRIPTION</b>
1710SS	1710 Slip Shaft Assembly
1760SS	1760 Slip Shaft Assembly
1810SS	1810 Slip Shaft Assembly
20RPLSS	20 RPL Slip Shaft Assembly
25RPLSS	25 RPL Slip Shaft Assembly
SPL170SS	SPL170 Slip Shaft Assembly
SPL250SS	SPL250 Slip Shaft Assembly

### 3. DETERMINE THE LENGTH OF THE DRIVELINE

To determine the length of the driveline, measure the joint centers and yoke lugs (B) of the existing part.



### 4. CONTACT YOUR ALLIANCE/MASCOT DEALER TO ORDER

- Find your dealer at [alliancetruckparts.com/dealers](http://alliancetruckparts.com/dealers)
- Provide the series of driveline
- Provide the type of assembly
- Provide driveline measurements



————— FIND YOUR NEAREST LOCATION AT [ALLIANCEPARTS.COM](http://ALLIANCEPARTS.COM) —————



DTNA/APSM-M-1103. Specifications are subject to change without notice. Copyright © Daimler Trucks North America LLC. All rights reserved. Alliance Parts is a brand of Daimler Trucks North America LLC, a Daimler company.